



## 28e Westminster Way, Oxford, Oxfordshire, OX2 0LW

£1,500 PCM - 8th August 2026

- One bedroom
- Parking for one car
- Council Tax Band B
- Unfurnished
- Communal gardens
- EPC rating B
- Gas CH
- Secure bicycle storage
- Mains gas electricity and water

## 28e Westminster Way, Oxford OX2 0LW

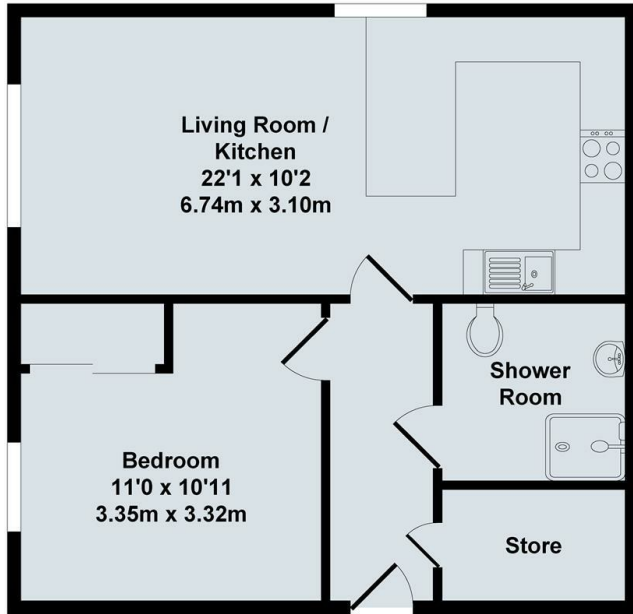
Built in 2016, a one bedroom first floor apartment finished to a high standard and available unfurnished. Easy access to Oxford City Centre and train station. Double Bedroom with fitted wardrobes. Shower room, Open plan style Living/Dining room/Kitchen - fully fitted with oven, gas hob, fridge/freezer, dishwasher and washer/dryer, Gas central heating, Communal garden. Secure bicycle storage, Parking for one car.



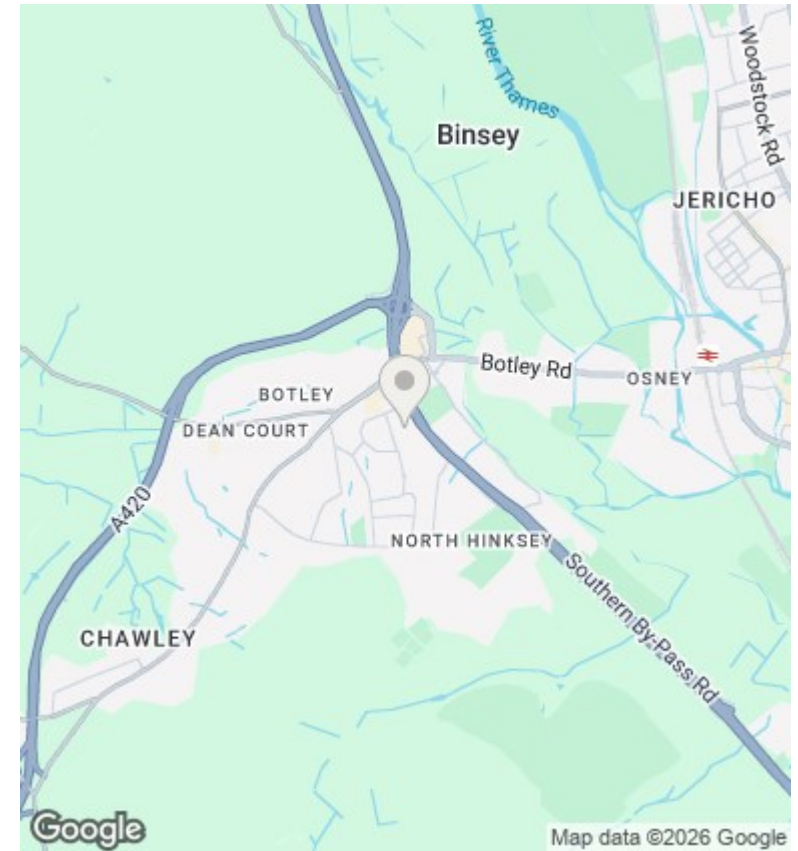
Council Tax Band: B



Built in 2016, a one bedroom first floor apartment finished to a high standard. Easy access to Oxford City Centre. Double Bedroom with fitted wardrobes. Shower room, Open plan style Living/Dining room/Kitchen - fully fitted with oven, gas hob, fridge/freezer, dishwasher and washer/dryer, Gas central heating, Communal garden. Secure bicycle storage, Parking for one car.



Total Approx. Floor Area 472 Sq.Ft. (43.90 Sq.M.)  
 All items illustrated on this plan are included in the "Total Approx Floor Area"



### Directions

### Viewings

Viewings by arrangement only. Call 01865 515900 to make an appointment.

### Council Tax Band

B

Energy Efficiency Rating		Current	Potential
<i>Very energy efficient - lower running costs</i>			
(92 plus) <b>A</b>			
(81-91) <b>B</b>		84	84
(69-80) <b>C</b>			
(55-68) <b>D</b>			
(39-54) <b>E</b>			
(21-38) <b>F</b>			
(1-20) <b>G</b>			
<i>Not energy efficient - higher running costs</i>			
<b>England &amp; Wales</b>		EU Directive 2002/91/EC	