



**Uxbridge Road, TW12**

**£2,300,000**

**Dexters**



## Uxbridge Road, TW12

This impressive detached Victorian home is beautifully presented and packed with period features. If you are a fan of high ceilings, ornate cornice, feature fireplaces and sweeping staircases then this is the house for you.

The property features four spacious reception rooms, a stylish kitchen/ breakfast room, five well proportioned bedrooms, including a principal suite with en-suite bathroom, and a flexible lower ground floor providing excellent additional living space, ideal for guests, working from home or accommodation for various generations.

A particular highlight is the stunning rear garden, which comes with a high degree of privacy and backs directly onto the picturesque Longford River. An elevated decked terrace provides the perfect space for outdoor entertaining and overlooks the mature landscaped grounds. Further benefits include a garage and tons of parking.

Uxbridge Road has easy access to the High Street, Bushy Park and Fulwell Golf Course. If schools are on the agenda you will find a number located close by, including Hampton School, Lady Eleanor Holles and Hampton Hill Juniors.

### Features

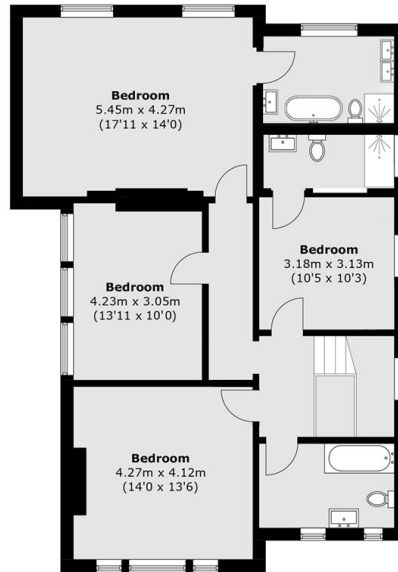
- Victorian
- Five/Six Bedrooms
- Detached
- Off Street Parking & Garage
- Private Garden
- Backs Onto The Longford River



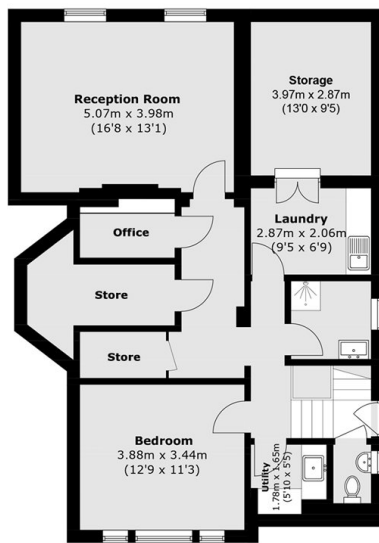




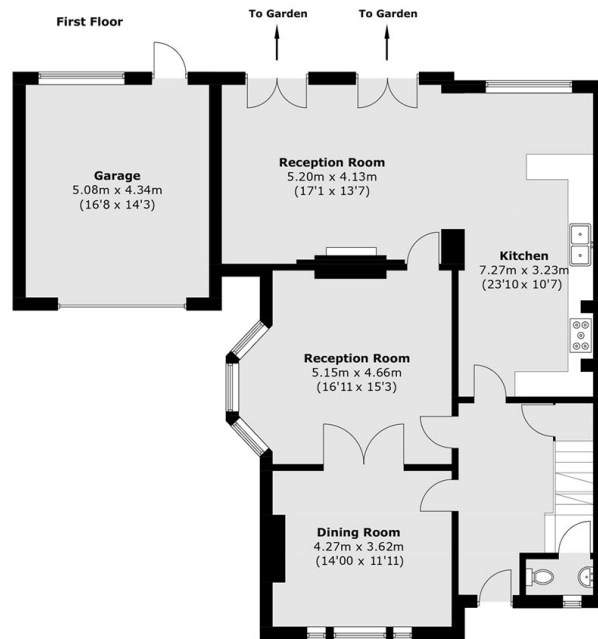
# Uxbridge Road, Hampton, TW12



First Floor



Lower Ground Floor



Raised Ground Floor

Total area (approx.): 280.5 sq. m (3,019.3sq. ft)  
(Excluding Garage)  
Garage : 22.5 sq. m (242.1 sq. ft)