



Ashley Gardens, Choppington, NE62 5AG

Offers Over **£140,000**

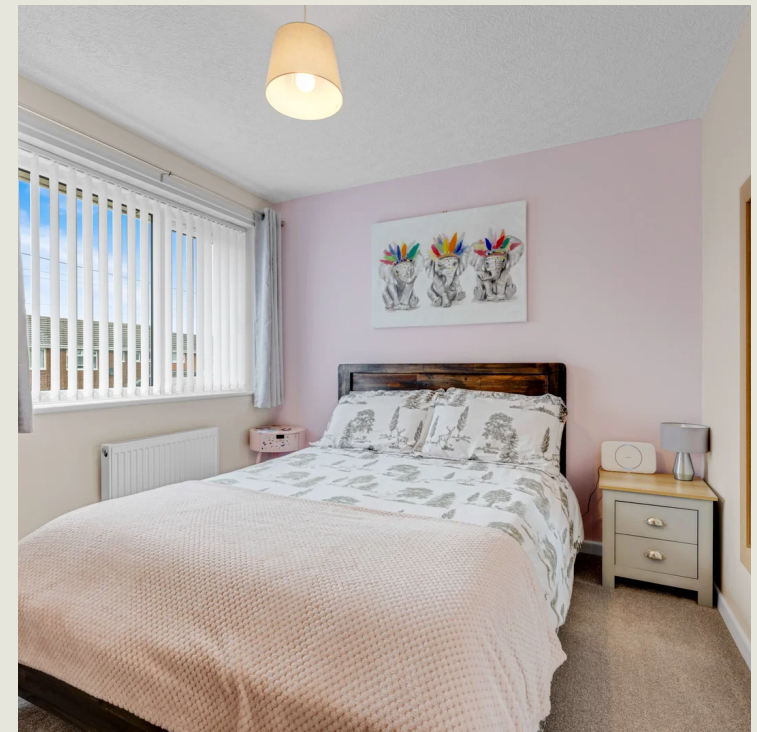
Harpers POWERED BY **exp** UK
property people

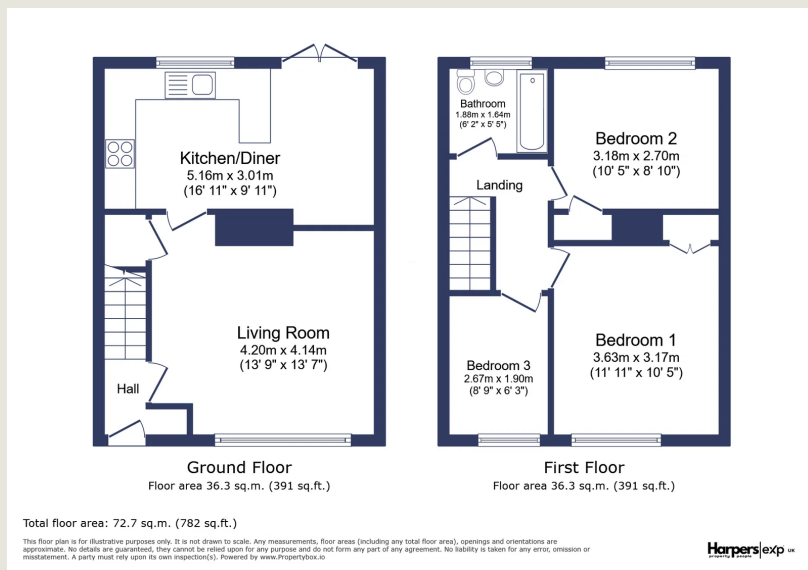
Bedrooms: 3 | Bathrooms: 1 | Receptions: 2

This beautifully presented three-bedroom mid-terrace home on Ashley Gardens, within the popular Wansbeck Estate, offers comfortable and versatile living, ideal for those seeking a property ready to move into with no onward chain. The ground floor features a bright, front-aspect living room, providing a welcoming space for relaxation. Adjacent is a modern, well-appointed kitchen/breakfast room, perfect for everyday dining and entertaining. Upstairs, you will find three well-proportioned bedrooms, two of which benefit from built-in storage, and a modern first-floor family bathroom, designed for contemporary convenience. Outside, the property benefits from a great-sized rear garden with gated access, offering a lovely retreat for outdoor enjoyment. Additional practicalities include on-street parking and a single garage conveniently located en-bloc. Situated in a popular residential area, this home provides a fantastic opportunity.

- Mid-Terrace Home
- Three Bedrooms (Two With Built-In Storage)
- Modern First Floor Family Bathroom
- Front Aspect Living Room
- Modern Well Appointed Kitchen/Breakfast Room
- Great-Sized Rear Garden With Gated Rear Access
- Beautifully Presented Throughout
- Garage En-Bloc
- No Onward Chain
- Popular Residential Location







Harpers Property People
80 Windsor Gardens, Bedlington, NE22 5SY

07813 673 606
ali@harpersproperty.com
<https://harpersproperty.com>

Harpers | POWERED BY **exp** TM UK
property people