



OFFERS IN THE REGION OF

£600,000

134 Church Hill

Barnsley, S71 4AQ

PROPERTY SUMMARY

Mistyfield House, Royston is a truly exceptional residence, occupying a generous plot and offering approximately 3,500 sq ft of highly versatile accommodation. This impressive detached home provides an outstanding standard of living, featuring five spacious double bedrooms alongside a self-contained one-bedroom annex, ideal for extended family or independent living.

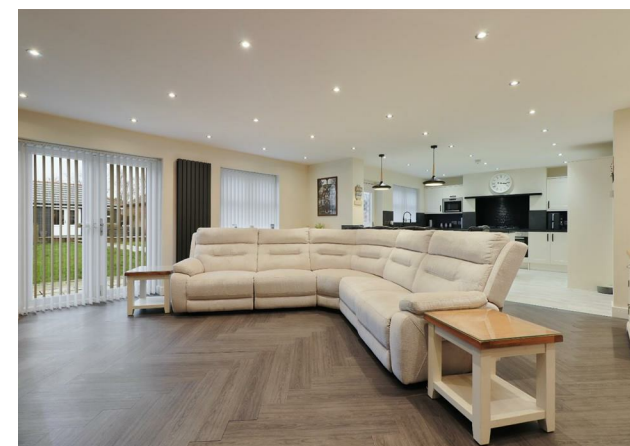
5



2



2







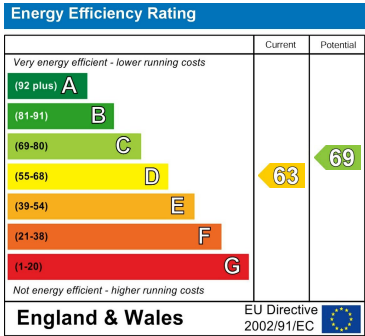
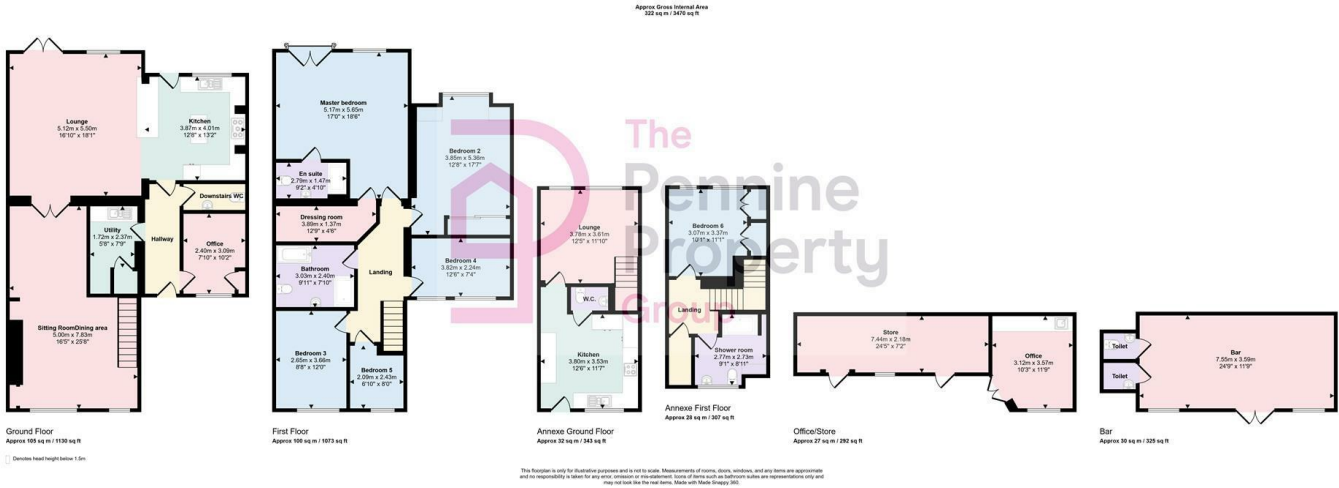


LOCAL AUTHORITY
BMBC

TENURE
Freehold

COUNCIL TAX BAND
C

VIEWINGS
By prior appointment only



Agents Note: Whilst every care has been taken to prepare these particulars, they are for guidance purposes only. All measurements are approximate and are for general guidance purposes only and whilst every care has been taken to ensure their accuracy, they should not be relied upon and potential buyers/tenants are advised to recheck the measurements

OFFICE ADDRESS
12 St Marys Street
Penistone
Sheffield
South Yorkshire
S36 6DT

OFFICE DETAILS
01226 766755
info@pennineproperty.co.uk