

Room (EPC Rating: C)

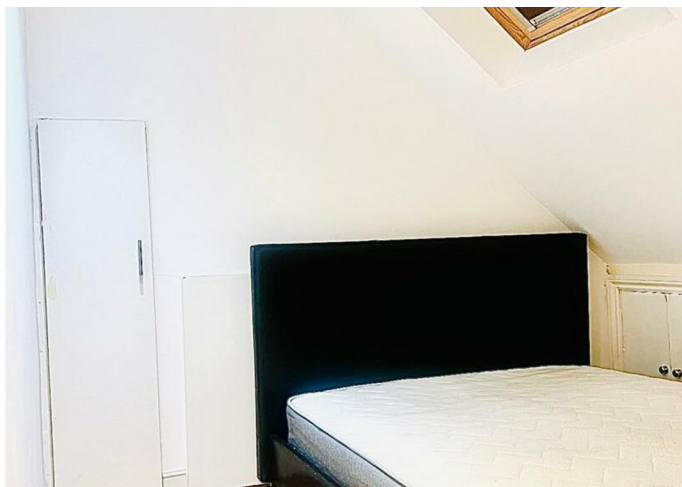
13, ROOM 1 ANNESLEY AVENUE, LONDON, NW9 5ED

Per month

£750 Per

FEATURES

- Single room, top floor
- Shared kitchenette access
- Quiet, comfortable space
- Close to amenities
- (All Bills Included, Fair Usage Applies)
- Shared shower room
- Ideal for professionals
- Near transport links



WINGATE 
Estate Agents

1 Bedroom Room located in London

Nestled in the charming area of Annesley Avenue, London, this delightful single room offers a perfect retreat for a single professional seeking a tranquil living environment. Situated on the top floor of a well-maintained house built in 1900, the room is bright and inviting, providing a comfortable space to unwind after a busy day.

The accommodation features one reception room and one bathroom, with the room available for single occupancy only. Residents will benefit from access to a shared kitchenette and shower room, which are shared with just one other room, ensuring a sense of privacy and ease. The rental price of £750 per calendar month includes all bills, subject to fair usage, making budgeting straightforward and hassle-free.

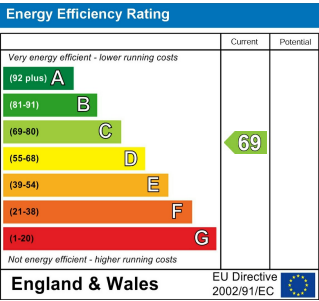
This property is ideally located, with convenient access to local amenities and excellent transport links, allowing for easy commutes and exploration of the vibrant city. Whether you are looking to enjoy the local cafes, shops, or parks, this location offers a wonderful balance of comfort and convenience.

In summary, this bright and well-appointed room in Colindale is an excellent choice for those seeking a quiet and comfortable living space in London. With its appealing features and prime location, it presents a fantastic opportunity for a single professional to call home.

Call us on
02045 310143

info@wingateestates.co.uk
<https://www.wingateestates.co.uk/>

Council Tax Band
C



Agents Note: Whilst every care has been taken to prepare these particulars, they are for guidance purposes only. All measurements are approximate and are for general guidance purposes only and whilst every care has been taken to ensure their accuracy, they should not be relied upon and potential buyers are advised to recheck the measurements.

