



THE LIMES, SW18

£425,000

- Three double bedrooms
- Excellent condition
- No onward chain
- Landscaped communal gardens
- Modern kitchen/bathroom
- Energy rating: E



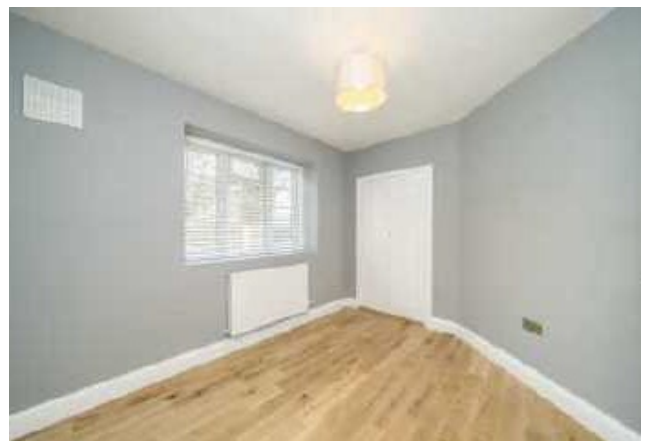


ABOUT THE HOME

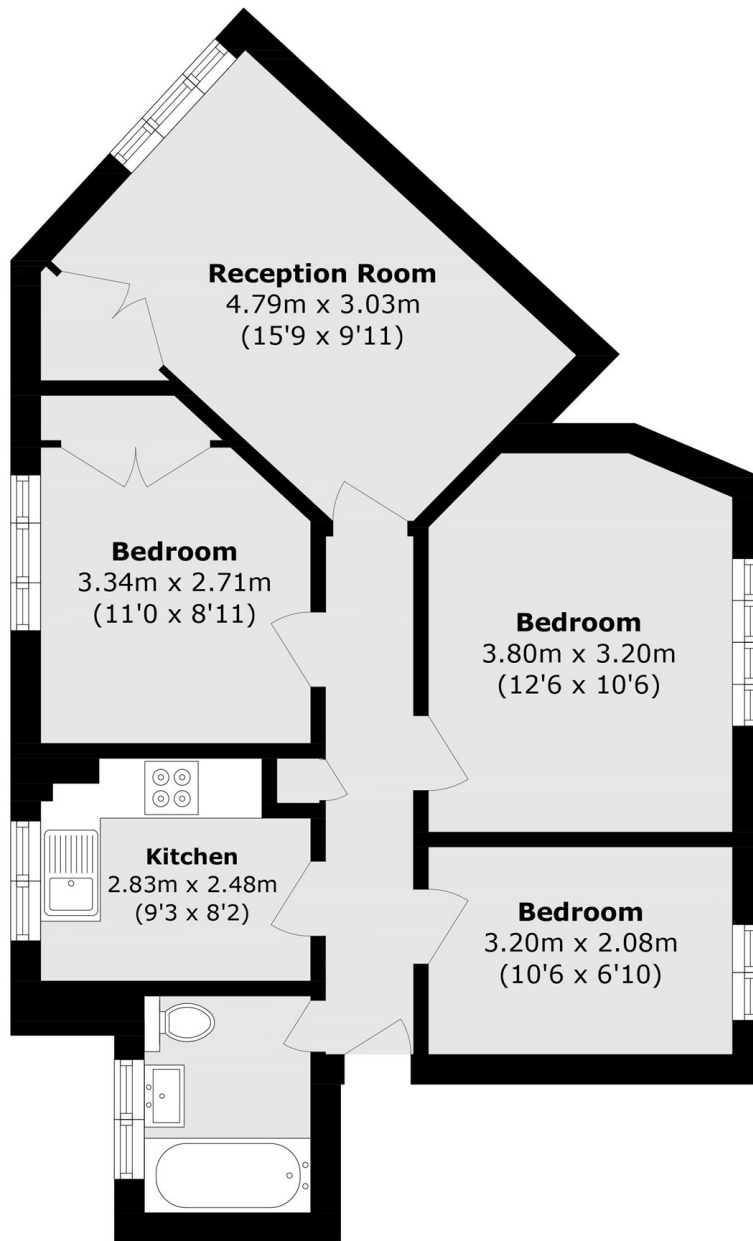
An impressively spacious three-bedroom apartment.

The property features a welcoming entrance hall, a contemporary family bathroom and three double bedrooms. The open-plan reception, kitchen and dining area are flooded with natural light. Further benefits include landscaped communal gardens and no onward chain.

Located within the popular Limes Gardens development in Southfields, this property enjoys a quiet residential setting. Southfields Underground Station (District Line) is within easy reach, providing direct links to Central London and Wimbledon. A variety of trendy shops, cafés and local amenities can be found nearby in Southfields Village, while the open spaces of King George's Park and Wimbledon Park are also close by, offering excellent leisure and recreational facilities.







Total area (approx.): 57.4 sq. m (617.8 sq. ft)

JACKSONS EARLSFIELD

372-374 Garratt Lane,
Earlsfield, London, SW18 4ES
Sales: 020 8971 7979
Lettings: 020 8971 7070

Energy Rating: E We aim to make our particulars both accurate and reliable. However they are not guaranteed; nor do they form part of an offer or contract. If you require clarification on any points then please contact us, especially if you're traveling some distance to view. Please note that appliances and heating systems have not been tested and therefore no warranties can be given as to their good working order.