



Salisburys

St Davids, Tavistock

Offers In Region Of £349,950

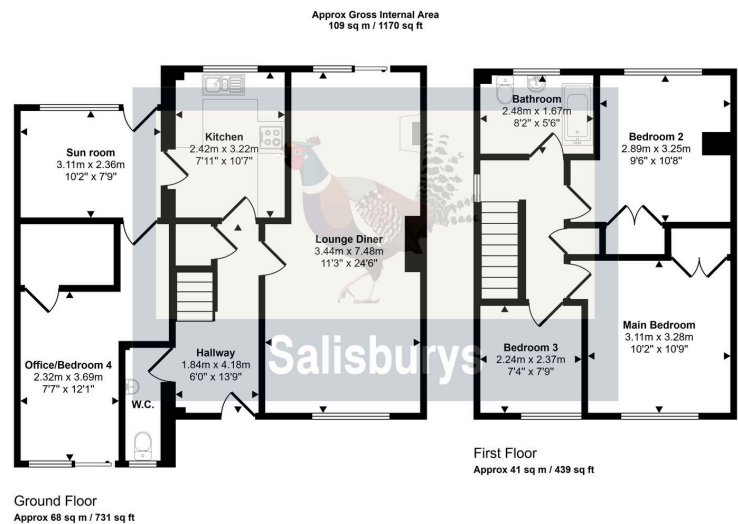
🛏 3 🚽 1 🛋 2



- Link detached 3/4 bedroom home
- Spacious accommodation
- Dining Room/Garden Room
- Downstairs w.c
- Enclosed rear garden
- Desirable location close to Whitchurch Down and Dartmoor
- Open plan Lounge with wood burner
- Single garage re-purposed as Office/Bedroom 4
- West facing garden with panoramic views
- Driveway parking



VERSATILE FOUR BEDROOM LINK DETACHED HOME - ideal for families and located in the highly sought-after St David's area of Tavistock, with far reaching views over the town and countryside. A short walk from Whitchurch Down and the moors, it's perfect for outdoor enthusiasts. The ground floor offers a spacious lounge with patio doors that open directly onto a rear terrace and garden, a well-appointed kitchen, a versatile garden room/dining area, and a convenient downstairs WC. Upstairs, the accommodation includes two generous double bedrooms, a single bedroom, and a modern family bathroom. The integral garage has been thoughtfully converted to provide a fourth bedroom or home office—perfect for remote working or guest accommodation. Externally, the home has driveway parking, a mature front garden, and a rear garden with lawn and patio. Within easy reach of schools and bus routes, this is an ideal family home.



This floorplan is only for illustrative purposes and is not to scale. Measurements of rooms, doors, windows, and any items are approximate and no responsibility is taken for any error, omission or mis-statement. Icons of items such as bathroom suites are representations only and may not look like the real items. Made with Made Snappy 360.

