

Carmine Court

Harrow • Middlesex • HA2 7HG

PCM: £1,400 PCM



coopers
est 1986

Set in the POPULAR CARMINE COURT DEVELOPMENT, Coopers are DELIGHTED to offer to the market this BEAUTIFUL and SPACIOUS ONE BEDROOM APARTMENT situated just moments from RAYNERS LANE STATION (Metropolitan/Piccadilly lines) with shops, restaurants and amenities close by. Briefly this natural filled light apartment offers a lounge that opens to a fully fitted modern kitchen, a contemporary bathroom and a spacious bedroom.

Short walk to Rayners Lane Tube Station

Bright and spacious

Double glazing

Modern fitted kitchen

Family bathroom

Large lounge

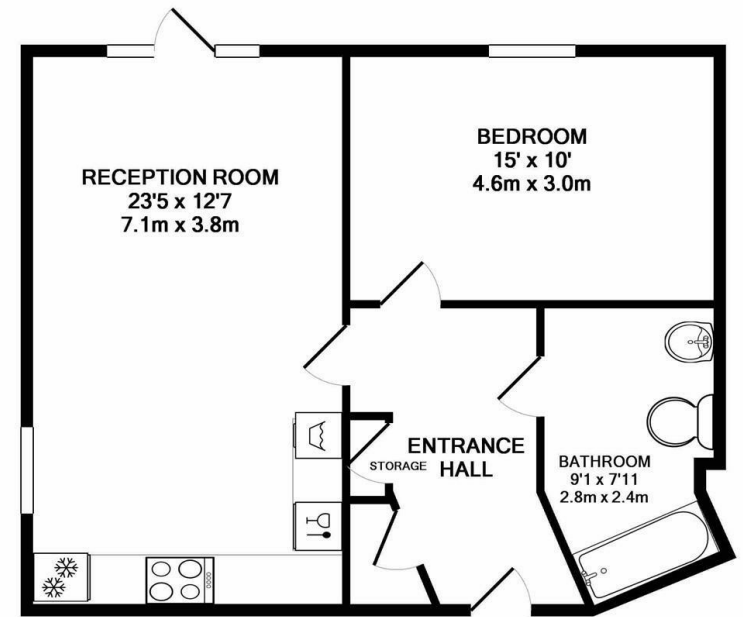
Secure development

Close to local shops

Part Furnished

Available Date

13th August 2026



TOTAL APPROX. FLOOR AREA 610 SQ.FT. (56.6 SQ.M.)

Whilst every attempt has been made to ensure the accuracy of the floor plan contained here, measurements of doors, windows, rooms and any other items are approximate and no responsibility is taken for any error, omission, or mis-statement. This plan is for illustrative purposes only and should be used as such by any prospective purchaser. The services, systems and appliances shown have not been tested and no guarantee as to their operability or efficiency can be given
Made with Metropix ©2017

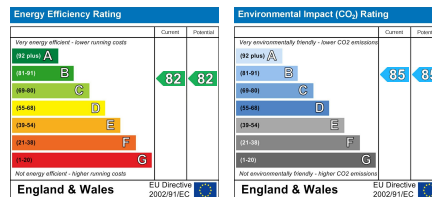


coopers
est 1986

01895 625 625

126-128 High Street, Ruislip,
Middlesex, HA4 8LL
rl@coopersresidential.co.uk

CoopersResidential.co.uk



Important Notice: These particulars, whilst believed to be accurate are set out as a general outline only for guidance and do not constitute any part of an offer or contract. Intending purchasers should not rely on them as statements or representation of fact, but must satisfy themselves by inspection or otherwise has the authority to make or give any representation or warranty in respect of the property.