



homeworks
estate agent





54 Swaffham Road
Dereham, NR19 2DL

☎ (01362) 65 44 44
✉ sales@homeworks-uk.com
🌐 www.homeworks-uk.com

School Plain, Scarning, Dereham, NR19 2PN

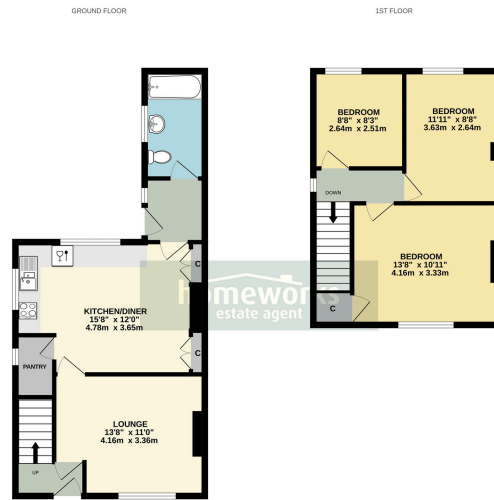
Guide Price £200,000

 3  1  2

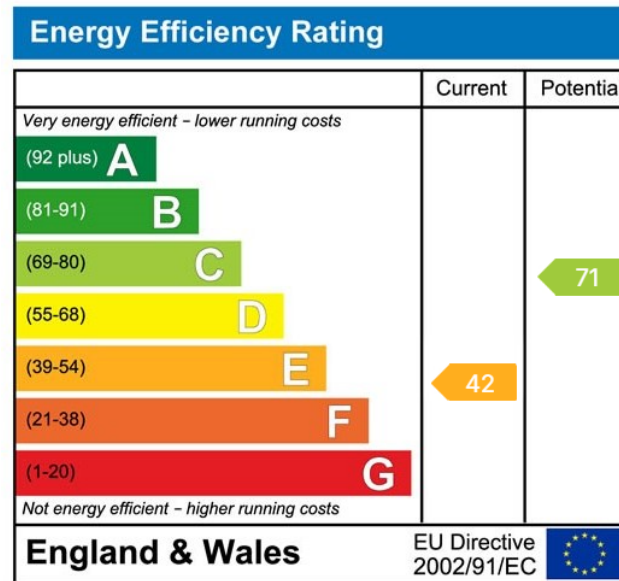


- SEMI-DETACHED HOME
- 13'8 LIVING ROOM
- GROUND FLOOR FAMILY BATHROOM
- ENCLOSED REAR GARDEN OVERLOOKING FIELDS
- IDEAL FIRST TIME BUY OR INVESTMENT
- THREE BEDROOMS
- 15'8 KITCHEN/BREAKFAST ROOM
- GENEROUS DRIVEWAY PARKING
- LOCATED CLOSE TO LOCAL SCHOOLS & AMENITIES
- ** GUIDE PRICE £200,000 - £225,000 **





**** ENJOYING OPEN FIELD VIEWS TO THE REAR ** CALL TODAY TO ARRANGE YOUR VIEWING ON THIS THREE BEDROOM SEMI-DETACHED HOME. WITH 13'8 LOUNGE, 15'8 KITCHEN/BREAKFAST ROOM, FAMILY BATHROOM TO GROUND FLOOR, GENEROUS DRIVEWAY PARKING & ENCLOSED REAR GARDEN. SITUATED JUST A STONES THROW FROM SCARNING'S POPULAR PRIMARY SCHOOL. ** GUIDE PRICE £200,000 - £225,000 ****



C AMOS MNAEA Managing Director
VAT no. 185 328 683

