



## Laurence Pountney Lane, EC4R

£4,500 Per calendar month

This unique two double bedroom, two bathroom townhouse is split over four floors and has a gated private front courtyard. Both bedrooms are on their own separate floors as well as the large eat-in kitchen and additional study. An ideal property for a couple, single professional or sharers looking to be in the heart of the City.

Laurence Pountney Lane is in the heart of the City and has the River Thames on its doorstep, it is surrounded by a wide variety of shops, bars and restaurants.

### Features

- Two Double Bedrooms
- Two Bathrooms
- Gated Townhouse
- Four Storeys
- High Ceilings
- Built-in Speakers

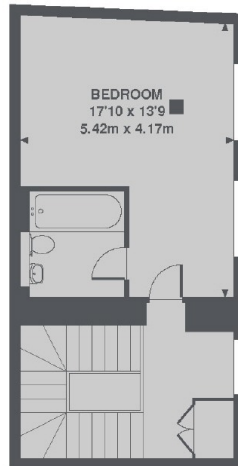


## Laurence Pountney Lane, EC4R

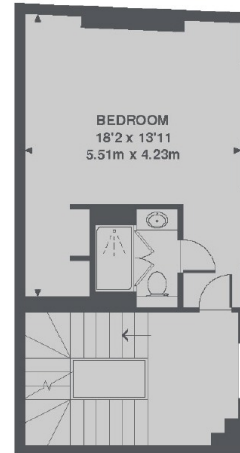
This unique two double bedroom, two bathroom townhouse is split over four floors and has a gated private front courtyard. Both bedrooms are on their own separate floors as well as the large eat-in kitchen and additional study. An ideal property for a couple, single professional or sharers looking to be in the heart of the City.



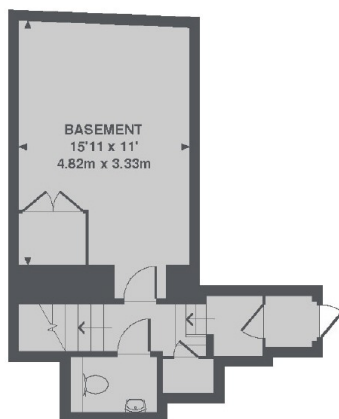
# Laurence Pountney Lane, London, EC4R



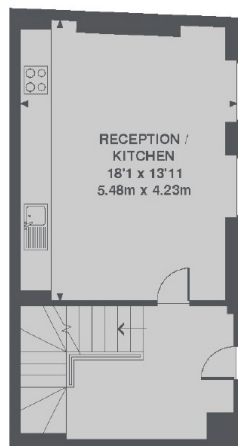
2ND FLOOR



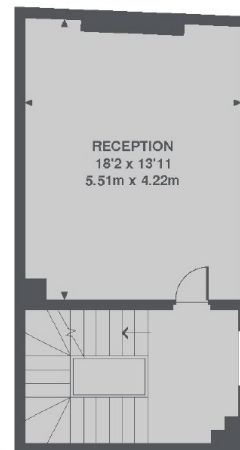
1ST FLOOR



BASEMENT



LOWER GROUND FLOOR



GROUND FLOOR

TOTAL APPROX. FLOOR AREA 1794 SQ. FT. (166.6 SQ. M.)

## Dexters

City  
5 Sandys Row  
London  
E17HW  
Lettings  
020 7392 9111

Energy Rating: C. We aim to make our particulars both accurate and reliable. However they are not guaranteed; nor do they form part of an offer or contract. If you require clarification on any points then please contact us, especially if you're traveling some distance to view. Please note that appliances and heating systems have not been tested and therefore no warranties can be given as to their good working order.



[dexters.co.uk](http://dexters.co.uk)