



Anchor House  
Smugglers Way, SW18

CHESTERTONS





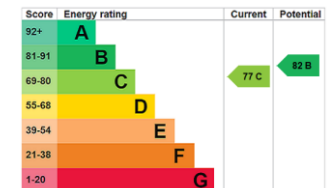
Accommodation comprises an open-plan kitchen/living room, a double bedroom with en-suite shower room and built-in wardrobe, a second double bedroom, separate family bathroom and a good size south west facing balcony.

Riverside West is a popular managed riverside development with 24-hour concierge and is conveniently located for commuting into the city via Wandsworth Town (3min walk to Old York Road), with Waterloo only four stops away.

The development benefits from an on-site convenience store, Virgin Active Gym, Nursery, Little Gym and is within walking distance of the Southside Shopping Centre and local shops and restaurants in Wandsworth and Clapham Junction.

- Two bedrooms, two bathrooms
- 662sqft
- South-west facing terrace
- Riverside development
- Third floor with lift
- Concierge

Offers Over £425,000



**Tenure:** Leasehold 970 years remaining  
**Service Charge:** £4000 per annum  
**Ground Rent:** £350 per annum  
**Local Authority:** Wandsworth Council  
**Council Tax Band:** F

*Chestertons Wandsworth Sales*

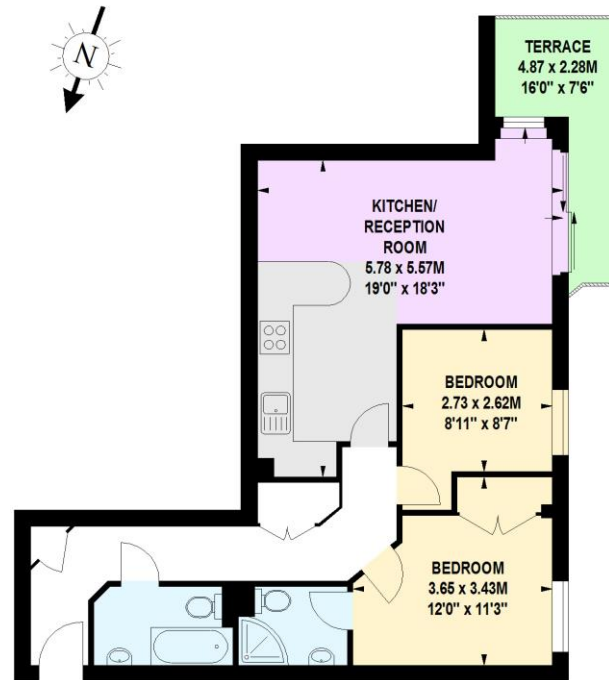
47 East Hill  
 London  
 SW18 2QE

wandsworth@chestertons.co.uk  
 0208 104 7530  
 chestertons.co.uk

## Anchor House, SW18

Approximate gross internal area

61.50 sq m / 662 sq ft



Third Floor

This floor plan is a representation for guidance purposes only, not for valuation.  
Any figure is approximate and must not be relied on as a statement of fact.  
Copyright of Wyatt Dixon Homes

WYATT DIXON  
HOMES

Chesterton UK Services Limited trading as Chestertons for themselves and for the vendor of this property whose agents they are, give notice that (i) these particulars do not constitute any part of an offer or contract, (ii) all statements contained within these particulars are made without responsibility on the part of Chestertons or the vendor, (iii) whilst made in good faith, none of the statements contained within these particulars are to be relied upon as a statement or representation of fact, (iv) any intending purchasers must satisfy themselves by inspection or otherwise as to the correctness of each of the statements contained within these particulars, (v) the vendor does not make or give either Chestertons or any person in their employment any authority to make or give representation or warranty whatsoever in relation to this property. Wide angle lenses may be used. ©Copyright Chestertons | Chesterton UK Services Limited | Registered Office 40 Connaught Street, Hyde Park, London W2 2AB Registered Company Number 05334580.



This paper is  
100% recyclable