



## PATRICIA CLOSE SLOUGH, SL1 5HE

# £285,000

Located in the desirable area of Patricia Close, Slough, this charming two-bedroom, two-bathroom first floor apartment in Oliver Court offers a perfect blend of comfort and convenience. The property boasts a spacious open-plan living and dining room, ideal for both relaxation and entertaining. The separate kitchen is fully fitted with modern eye



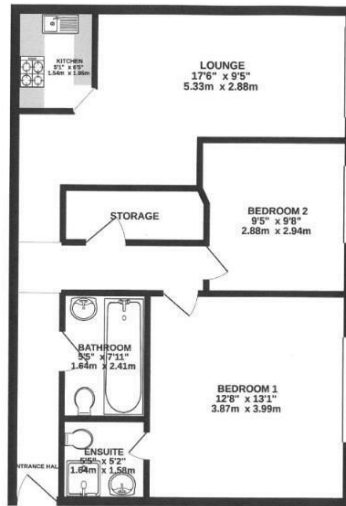
---

  **2**  **1**

 **2** **EPC B**

---

GROUND FLOOR  
654 sq.ft. (60.8 sq.m.) approx.



and base level units, complemented by integral appliances that make cooking a delight.

The large main bedroom features a fitted wardrobe and an ensuite shower room, providing a private sanctuary for rest and rejuvenation. The second bedroom is a well-proportioned single, perfect for guests or as a home office. Additionally, the family bathroom is conveniently located, ensuring that all your needs are met.

The property operates an entry phone system for added security and peace of mind and there is an allocated parking space within the gated surroundings.

This apartment is situated in a prime location, just a stone's throw away from local shops and amenities, making daily errands a breeze. With its thoughtful layout and modern features, this property is an excellent opportunity for those seeking a comfortable home in a vibrant community. Whether you are a first-time buyer or looking to invest, this apartment is sure to impress.

- Two double bedroom 1st floor flat
- Bathroom + en suite to master bedroom
- Excellent transport links
- Close to Burnham Station
- Allocated parking in a secure gated development
- Close to local Schools
- Beautifully presented apartment
- Long 980 lease years remaining
- Close to local amenities
- Early viewing advised



411 Bath Road, Slough, SL1 5QL  
t: 01628 667442  
e: sales@cameronking.co.uk

