

78 Millstream Mews, £295,000*

(Other charges apply)

RICHMOND
VILLAGES

Part of Bupa



1



1



EPC - C



1 bedroom first floor apartment

A spacious onebedroom topfloor apartment located on Mill Stream Mews, within our luxurious retirement living development. The property benefits from views of the lake and a west facing balcony, the perfect placed to enjoy lazy summer afternoon.

For those seeking an active and sociable lifestyle, this location truly offers the best of both worlds. Just a short stroll takes you to the heart of our vibrant retirement village, where you can enjoy an array of outstanding facilities, welcoming social spaces, and opportunities to take part in a wide range of activities.



Specification

- A bright and spacious dual-aspect living room with French doors opening onto the balcony.
- A contemporary, well-designed kitchen with integrated appliances and stylish finishes, open to the living area.
- A light-filled main bedroom with fitted wardrobes and direct access to a modern walk-in wet room.
- A sleek, modern ensuite featuring a walk-in shower, fitted storage, and quality contemporary fittings.
- A welcoming entrance hall providing access to all rooms, with generous storage and a separate utility cupboard.
- TV and satellite points*.
- Beautifully maintained gardens with access to village amenities, a bowling green, nature spaces, and allocated parking.

*Satellite subscription not included.

Important Notice:These particulars are intended to give a fair and substantially correct overall description. All dimensions are approximate. The properties are sold unfurnished. Properties are sold on a 125 year lease and this property has 109 years remaining.



01235 773970

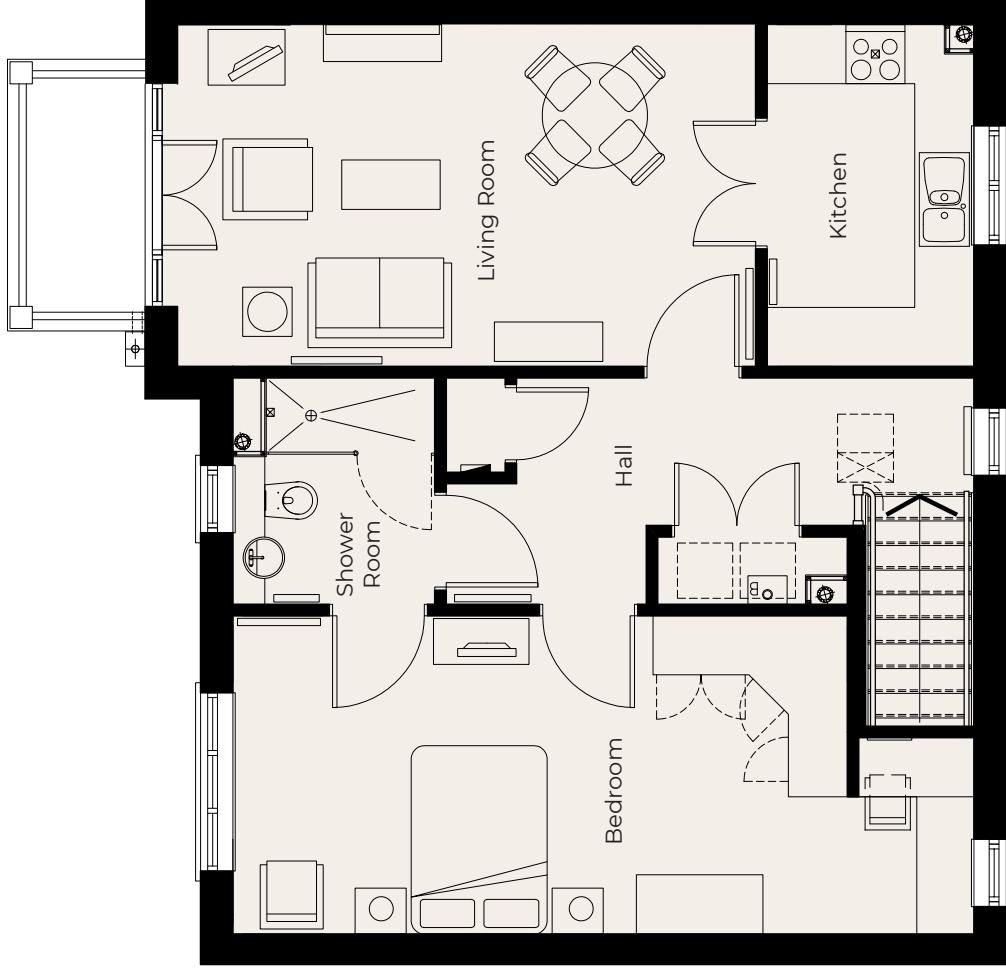
letcomberegis@richmond-villages.com

Richmond Villages Letcombe Regis,
South Street, Letcombe Regis, Oxfordshire OX12 9RG

78 Millstream Mews

First Floor | 76.4m² - 822ft²

Kitchen
3470mm x 2100mm 11'5" x 6'11"
Living Room
3470mm x 5869mm 11'5" x 19'3"
Bedroom
3230mm x 7522mm 10'7" x 24'8"
En Suite Shower Room
2300mm x 2050mm 7'7" x 6'9"



These particulars are intended to give a fair and substantially correct overall description.

Measurements have been taken at 1500mm skimming height.

All dimensions are approximate. Bedroom measurements include the wardrobe if applicable. Room measurements include bay windows if applicable.

Furniture layout is to give an indicative impression. Although all efforts have been made to ensure its accuracy at time of print dimensions, fixtures, fittings, finishes and specifications are subject to change without notice.

The properties are sold unfurnished.

