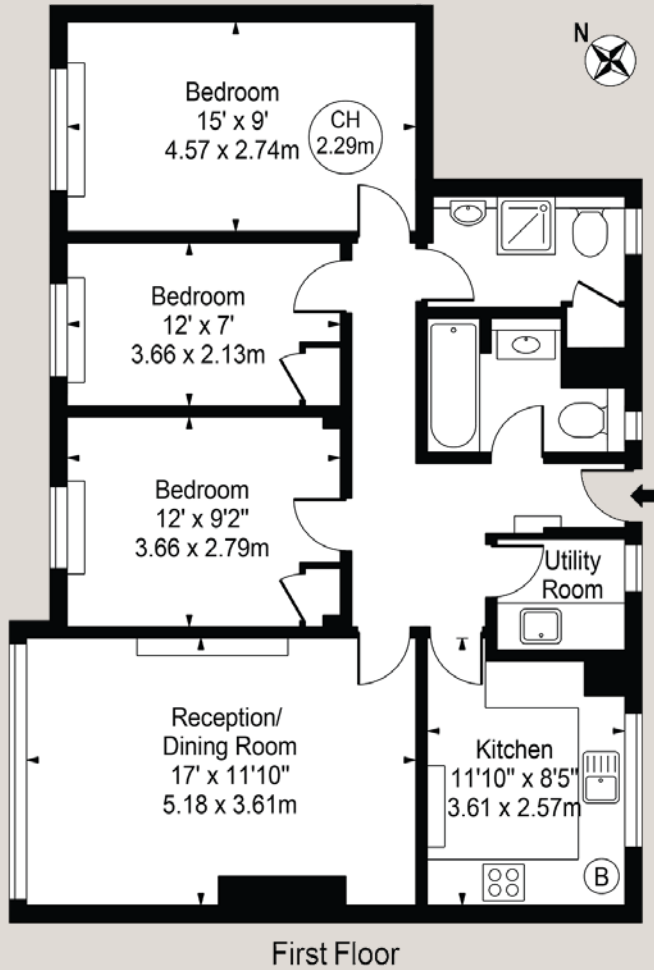


Mead House, Ladbroke Road, W11



Approx. Gross Internal Area
862 sq ft (80.08 sq m)



A well presented 3 bedroom apartment with a big eat-in kitchen and separate utility room just behind Holland Park Avenue and close to the tube.

- 3 bedrooms & 2 bathrooms
- Large reception room
- Separate eat-in kitchen
- Utility room
- Available mid-June

Terms

Rent: £3,466.67 pcm / £800 pw
Furniture: Unfurnished
Availability: Mid-June
EPC: C
Council Tax: Band E

For clarification purposes we wish to inform all interested parties that we have prepared these particulars as a general guide. We have not carried out a detailed survey nor tested the services, appliances and specific fittings. Room sizes should not be relied upon for carpets and furnishings.

JOHN WILCOX
& Co.

020 7602 2352

www.johnwilcox.co.uk