



Fairbank House

13 Beaufort Square, NW9

£5,500 per month
(£1,269.23 per week)

Luxurious Penthouse Apartment with Stunning City Views

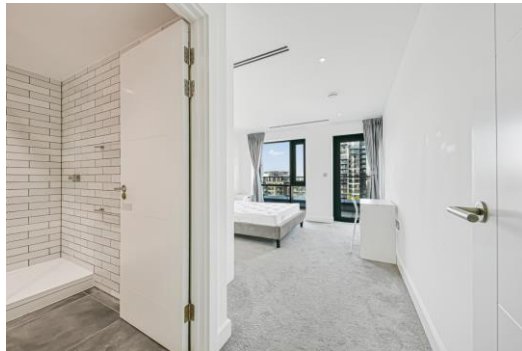
Introducing this exquisite 4-bedroom penthouse apartment located in the heart Beaufort Park. Boasting a generous 1,720 sq ft of living space, this modern new build offers a perfect blend of style and sophistication.

The property features a spacious reception room, four bathrooms, and a well-appointed kitchen, perfect for entertaining guests. Step out onto the private roof terrace and balcony to enjoy panoramic views of the city skyline.

Residents will have access to the lift, and a dedicated porter service, ensuring a convenient and luxurious lifestyle.

This stunning penthouse offers the epitome of city living, combining contemporary design with unparalleled comfort.

CHESTERTONS



Fairbank House

13 Beaufort Square, NW9

- 4 Bedroom
- 4 Bathroom
- Large Private Roof Terrace
- Furnished



Minimum Term: 12 months
Deposit Required: £7,615.38
Local Authority: London Borough of Barnet
Council Tax Band: F
EPC Rating: C
Furnished

| Score | Energy rating | Current | Potential |
|-------|---------------|---------|-----------|
| 92+ | A | | |
| 81-91 | B | | |
| 69-80 | C | 69 C | 69 C |
| 55-68 | D | | |
| 39-54 | E | | |
| 21-38 | F | | |
| 1-20 | G | | |

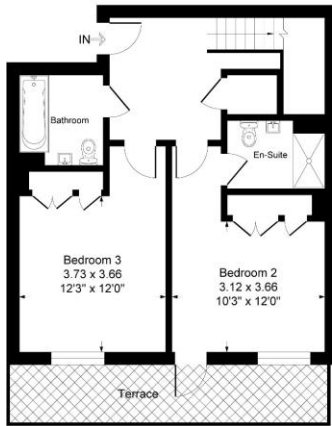
Chestertons Hampstead Lettings

55-56 Hampstead High Street
Hampstead
London
NW3 1QH
hampsteadlettingsusers@chestertons.co.uk
02077941125
chestertons.co.uk

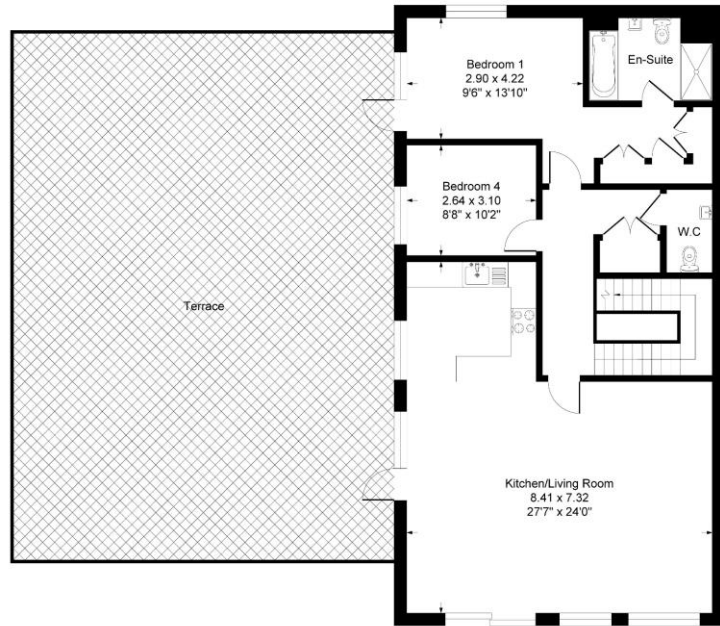
Additional tenant charges apply (fees apply to non-AST tenancies only)
Tenancy Agreement Fee: £300
References per Tenant/Guarantor: £60
Inventory check (approx. £100 – £250 inc. VAT)
[chestertons.co.uk/property-to-rent/applicable-fees](https://www.chestertons.co.uk/property-to-rent/applicable-fees)

Fairbank House, 13 Beaufort Square, London, NW9

Approximate Gross Internal Floor Area = 159.7 sq m / 1720 sq ft
Terrace Area = 96.9 sq m / 1043 sq ft



Eighth Floor



Ninth Floor

Illustration for identification purposes only, measurements are approximate, not to scale.

