



Portsmouth Road, KT6

£525,000

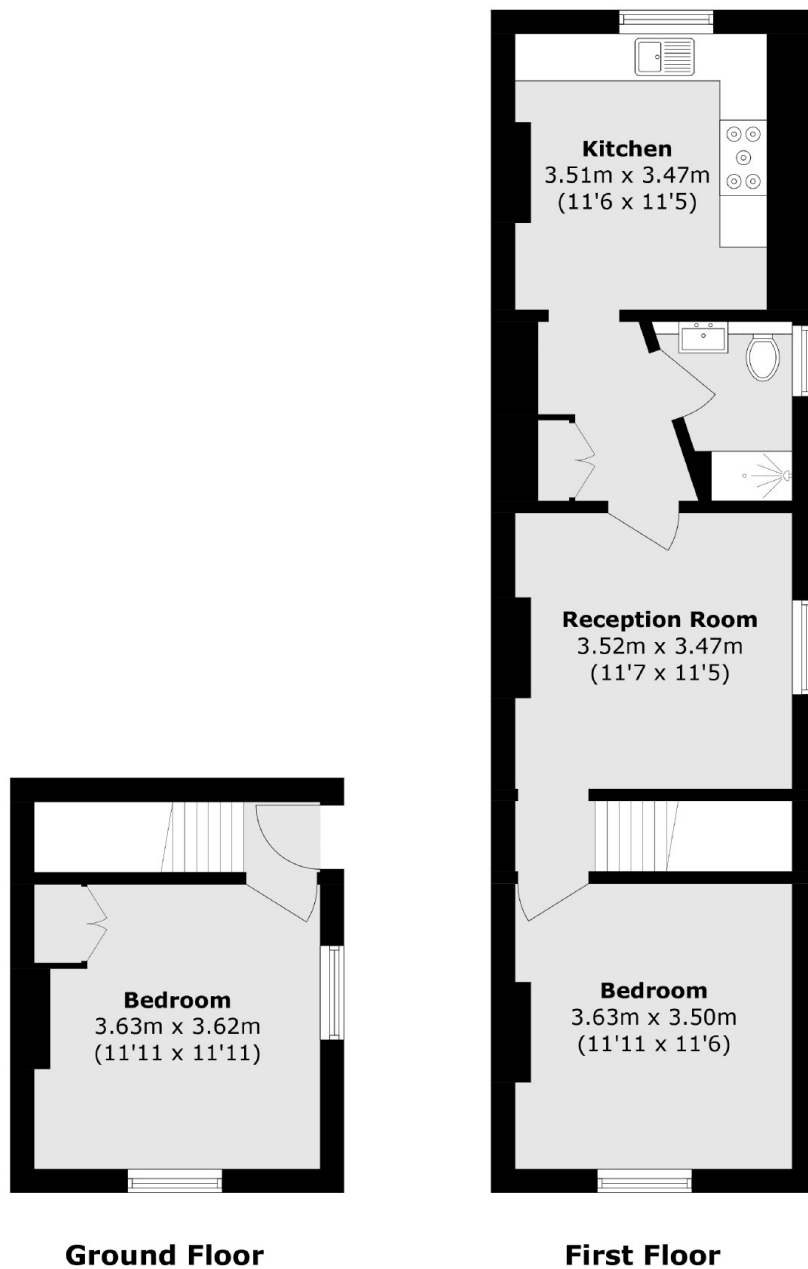
A wonderful split level Victorian maisonette, situated on a prime river road and offered with a share of freehold, two double bedrooms, a modern kitchen and bathroom, reception room and a spacious private garden. There is also off street parking and no onward chain

Portsmouth Road runs along the idyllic River Thames with Surbiton high street and the mainline train station, with fast train to Waterloo, approximately half a mile away.

Features

- Victorian
- Ground Floor and First Floor
- Two Double Bedrooms
- Private Garden
- Off Street Parking
- No Onward Chain

Portsmouth Road, Surbiton, KT6



Total area (approx.): 64.8 sq. m (697.5 sq. ft)