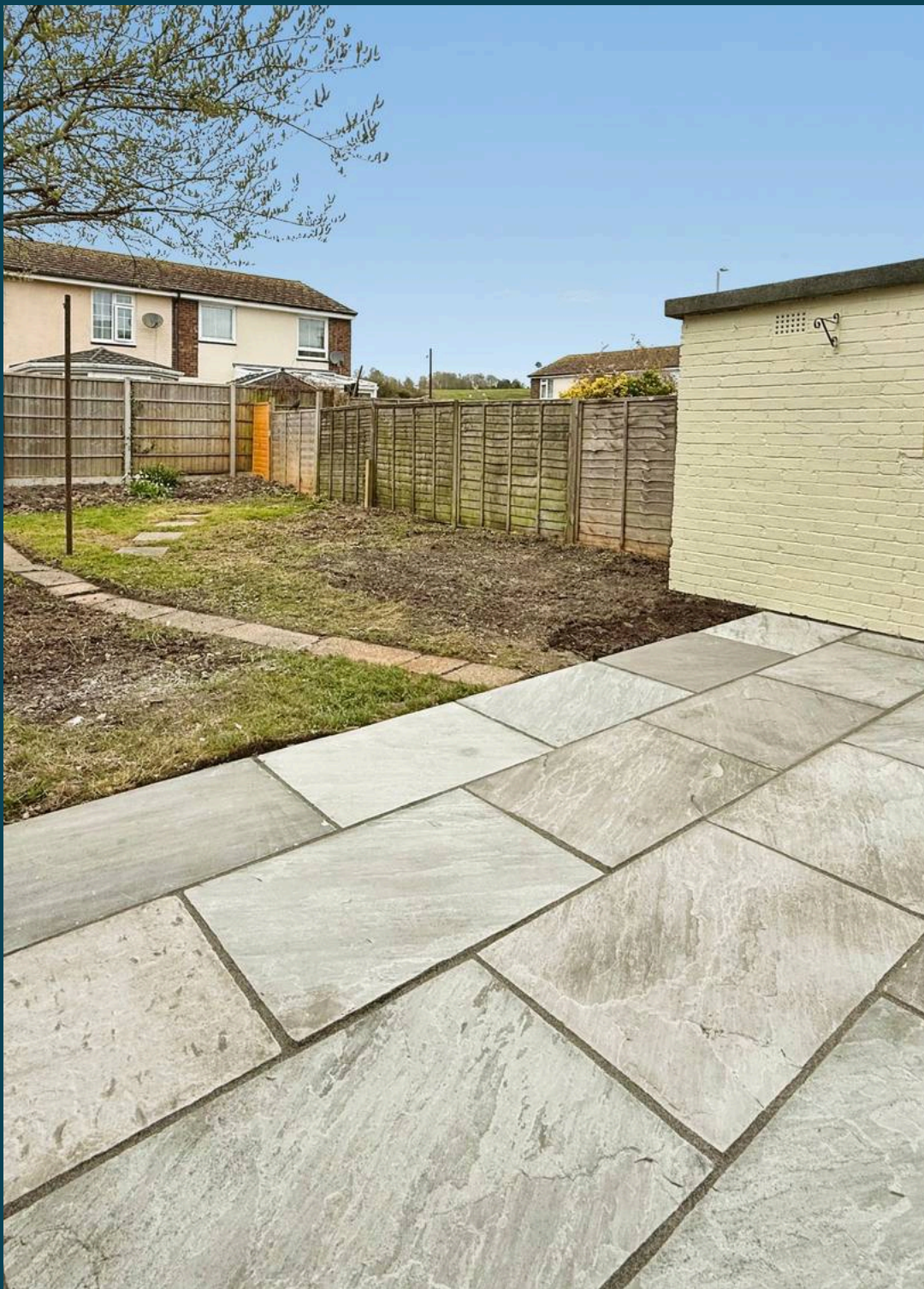




93 Pottingfield Road, Rye
£260,000





93 Pottingfield Road

Newly renovated, CHAIN FREE, two bedroom home in Rye. Potential for driveway (subject to the usual permissions), level rear garden, utility room, short walk to town. Perfect for first time buyers.

Council Tax band: B

Tenure: Freehold

EPC Energy Efficiency Rating: F

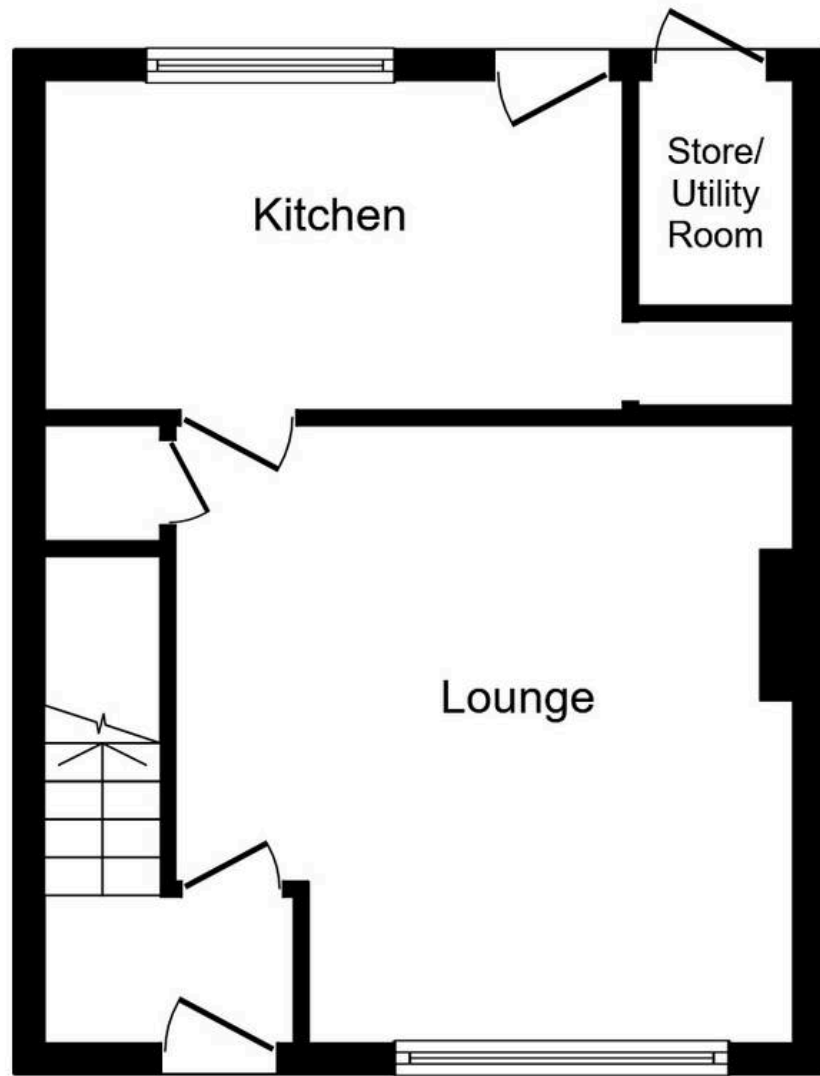
EPC Environmental Impact Rating: B

- Fully Renovated Home
- Potential to Create Driveway Subject to Usual Consents
- Chain Free
- Two Bedrooms
- Outdoor Store, Suitable as Utility Room
- Perfect First Time Purchase
- Low Maintenance, Level Rear Garden
- Rewired & Replumbed Throughout



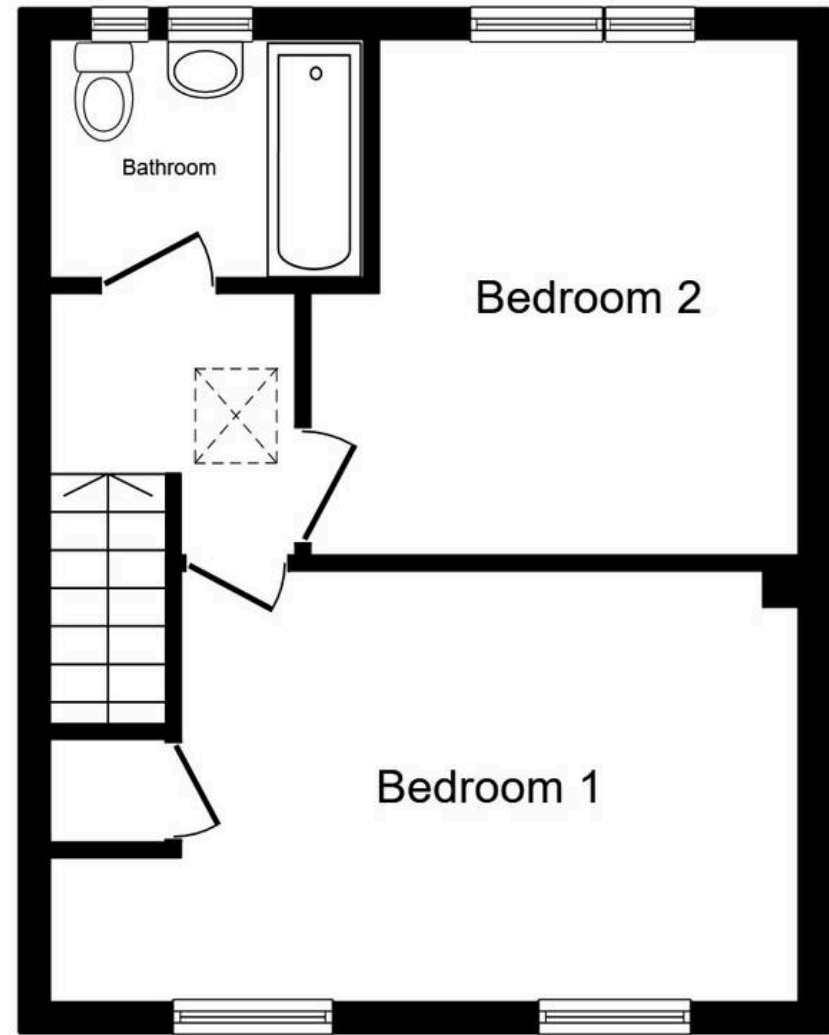






Ground Floor

Floor area 34.1 sq.m. (367 sq.ft.)



First Floor

Floor area 34.1 sq.m. (367 sq.ft.)

Total floor area: 68.2 sq.m. (734 sq.ft.)

This floor plan is for illustrative purposes only. It is not drawn to scale. Any measurements, floor areas (including any total floor area), openings and orientations are approximate. No details are guaranteed, they cannot be relied upon for any purpose and do not form any part of any agreement. No liability is taken for any error, omission or misstatement. A party must rely upon its own inspection(s). Powered by www.Propertybox.io



Nested Rye

01797 903045 • barnaby.osborne@nested.com • nested.com/barnaby-osborne

