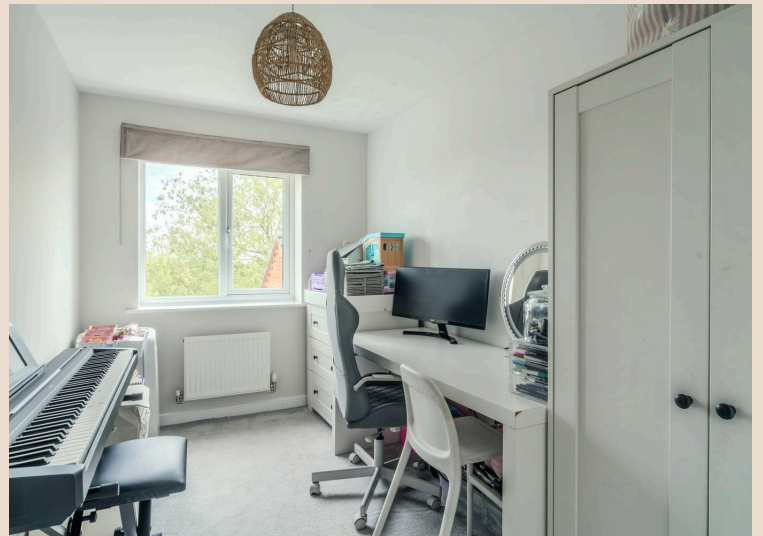




19 Cartwright Way, Evesham

£350,000 Freehold

Exceptional Bellway-built 3-bed detached home in Hampton. Premium finishes, private garden, home office, garage, parking. En-suite to main bedroom. Sought-after village near Evesham and the Cotswolds.



Hampton is a popular and sought-after residential village on the edge of the Cotswolds, sitting just outside the vibrant market and river town of Evesham with its excellent range of shops, restaurants and leisure facilities. Day-to-day amenities are close to hand, including a well-stocked convenience store within the village and a wonderful farm shop nearby. With the Cotswolds Area of Outstanding Natural Beauty effectively on the doorstep, the setting is as scenic as it is convenient, a combination that makes Hampton consistently one of the most in-demand addresses in the area.

Council Tax band: D

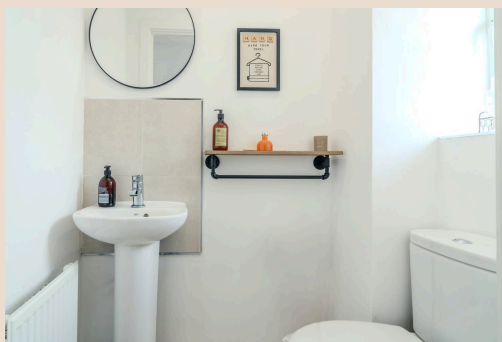
Tenure: Freehold

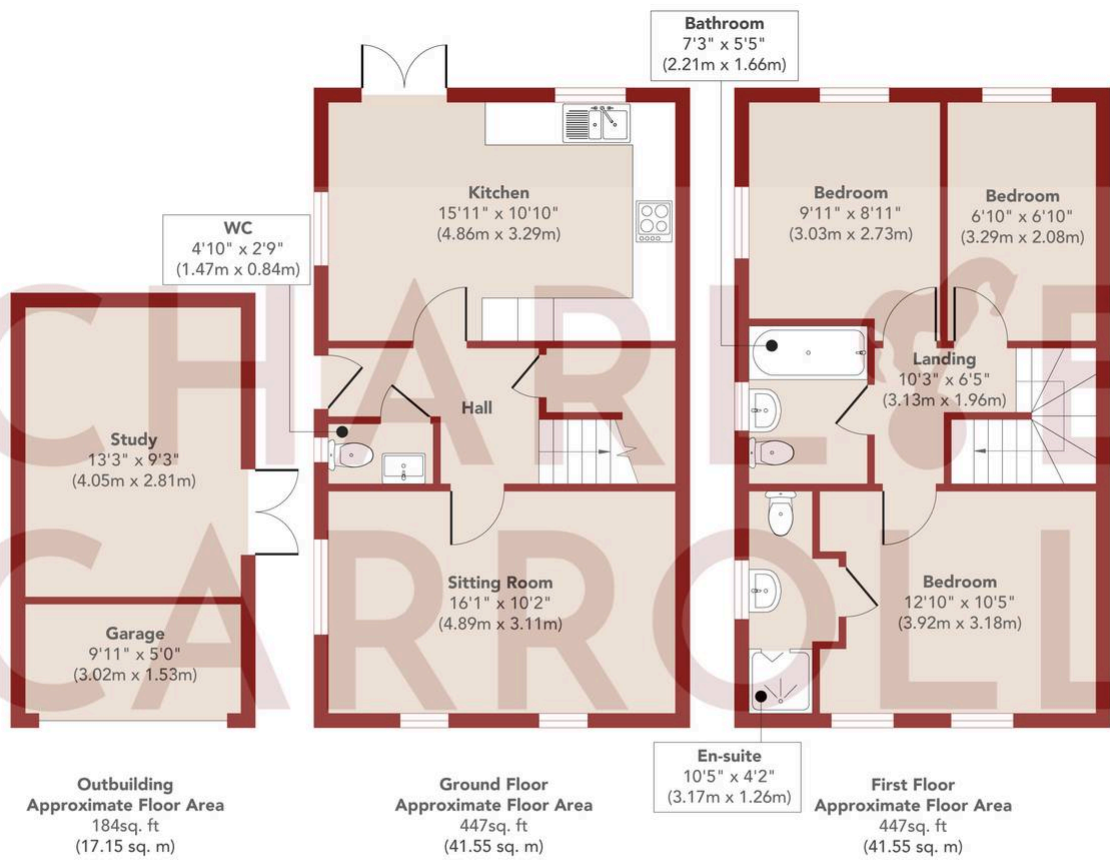
EPC Energy Efficiency Rating: B

EPC Environmental Impact Rating: B



- Exceptional Bellway-built detached home finished to a high specification by one owner from new, immaculately maintained throughout
- Stunning kitchen dining room with French doors opening onto a private, low-maintenance garden with patio
- Tastefully converted home office within the garage, with its own steps and double French doors from the garden
- Bright dual-aspect lounge with shutters, offering a lovely flow throughout the ground floor
- Principal bedroom with en suite





Approx. Gross Internal Floor Area 1078 sq. ft / 100.25 sq. m (Including Outbuilding)

Approx. Gross Internal Floor Area 894 sq. ft / 83.10 sq. m (Excluding Outbuilding)

Illustration for identification purposes only, measurements are approximate, not to scale

Produced by Elements Property