



13 Juniper Close

Ashford, TN23 3JY

Offers In Excess Of £300,000

A well presented and spacious three bedroom end of terrace home, offered for sale for the first time in over 40 years and located in the popular Godinton Park development. The property features a generous 24 ft sitting/dining room, kitchen, and a bright sunroom overlooking the garden. Upstairs offers three bedrooms and bathroom/WC. Further benefits include gas central heating, double glazing, an enclosed rear garden and garage. Ideally situated within walking distance of Ashford town centre and the mainline station, this is a well located family home with plenty of space and practicality.

Viewing

Please contact our Ashford Office on 01233 646411 if you wish to arrange a viewing appointment for this property or require further information.

- END OF TERRACE HOUSE
- THREE BEDROOMS
- 24FT SITTING/DINING ROOM
- SUNROOM
- GARAGE TO SIDE
- QUIET CUL DE SAC POSITION
- CLOSE TO LOCAL SCHOOLS & CONVENIENCE SHOPS
- GAS CENTRAL HEATING & DOUBLE GLAZING



3



1



2



D

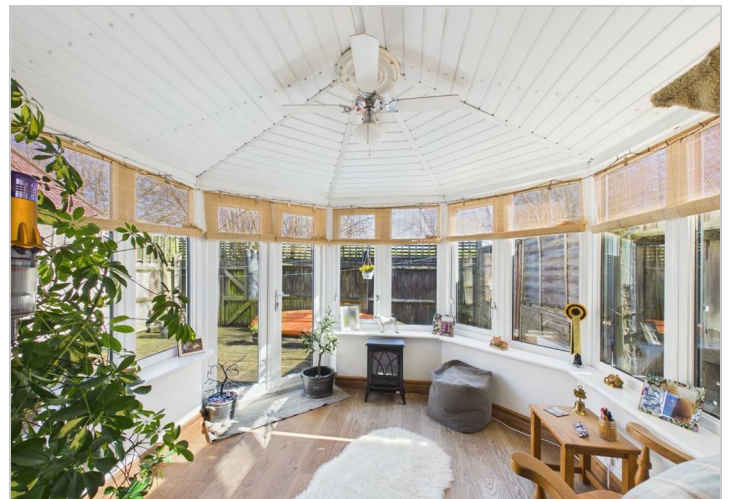
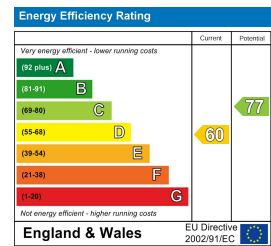
Floor Plan



Area Map



Energy Efficiency Graph



These particulars, whilst believed to be accurate are set out as a general outline only for guidance and do not constitute any part of an offer or contract. Intending purchasers should not rely on them as statements of representation of fact, but must satisfy themselves by inspection or otherwise as to their accuracy. No person in this firm's employment has the authority to make or give any representation or warranty in respect of the property.