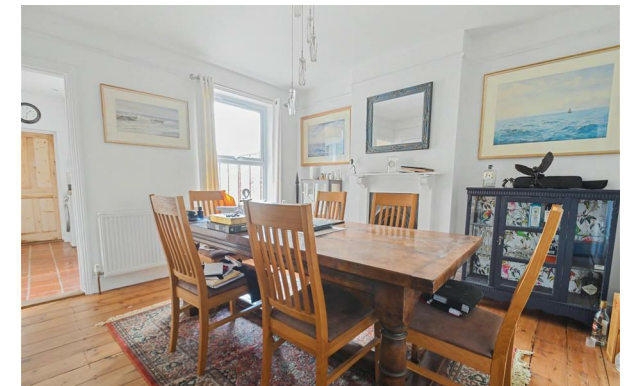


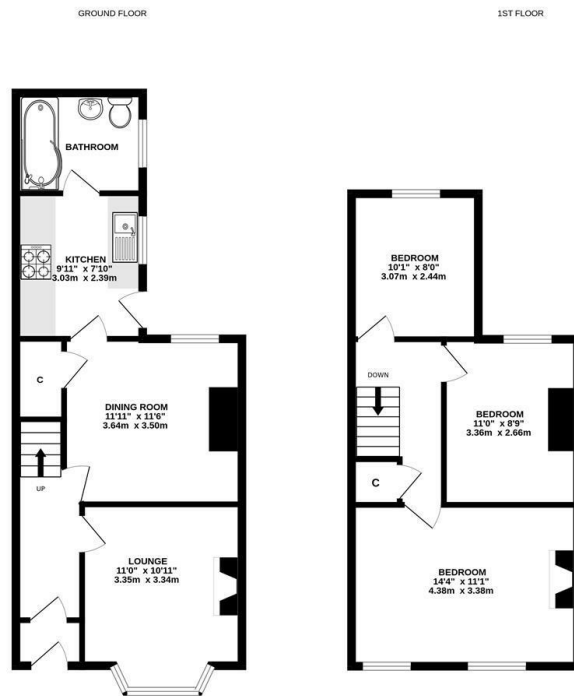
# KEYSTONE



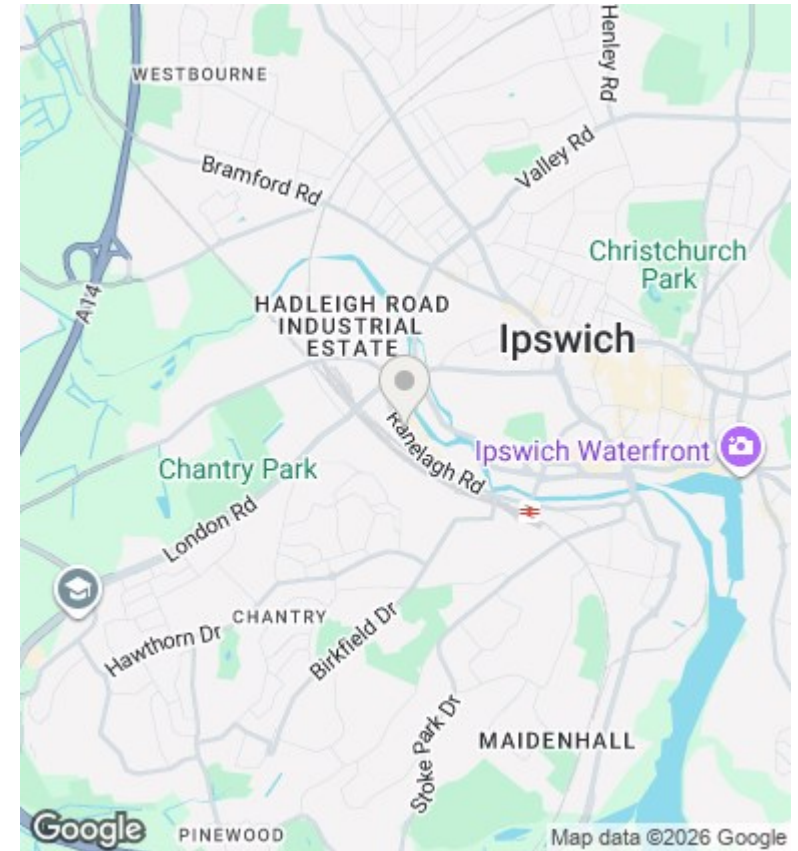
Ranelagh Road, Ipswich, IP2 0AH

£1,095 PCM

- Unfurnished Three bedroom House
- Three double bedrooms
- Fitted kitchen
- Enclosed Rear Garden
- Close to Ipswich train station
- Entrance Hall
- Ground floor bathroom with a shower
- Redecorated throughout
- Two reception rooms
- Gas Central Heating & Double glazed



Whilst every attempt has been made to ensure the accuracy of the floorplan contained here, measurements of doors, windows, rooms and any other items are approximate and no responsibility is taken for any error, omission or mis-statement. This plan is for illustrative purposes only and should be used as such by any prospective purchaser. The services, systems and appliances shown have not been tested and no guarantee as to their operability or efficiency can be given.  
Made only 14/06/2025



## Directions

## Viewings

Viewings by arrangement only. Call 01473 221 399 to make an appointment.

EPC Rating:  
D

Energy Efficiency Rating		Current	Potential
<i>Very energy efficient - lower running costs</i>			
(92 plus) <b>A</b>			
(81-91) <b>B</b>			<b>81</b>
(69-80) <b>C</b>			
(55-68) <b>D</b>		<b>56</b>	
(39-54) <b>E</b>			
(21-38) <b>F</b>			
(1-20) <b>G</b>			
<i>Not energy efficient - higher running costs</i>			
<b>England &amp; Wales</b>		EU Directive 2002/91/EC	