



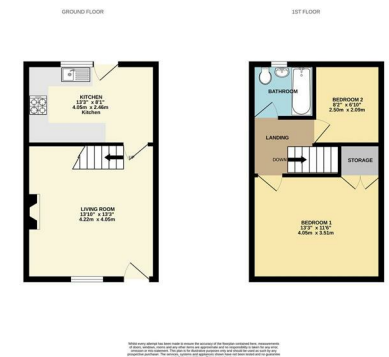
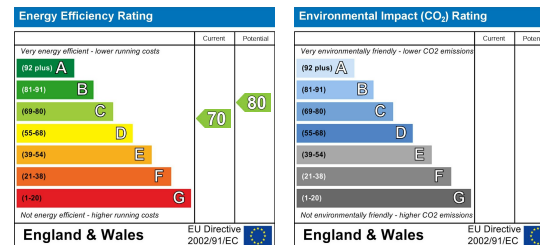
jordan fishwick

93 Batemill Road, Birch Vale, SK22 1BB

Guide Price £875



*** AVAILABLE NOW *** Beautifully presented two-bedroom stone cottage located in the highly sought-after and picturesque village of Birch Vale. Recently redecorated throughout, the property offers peace of mind with new gas safety and electrical certificates completed in 2026. The accommodation briefly comprises a stylish fitted kitchen, an inviting living room featuring a charming feature fireplace, two well-proportioned bedrooms, and a contemporary fitted bathroom. This delightful cottage perfectly combines character features with modern comfort, making it an ideal purchase for first-time buyers, downsizers, or those seeking a charming countryside retreat. EPC Rating C. Un-furnished.



These particulars are believed to be accurate but they are not guaranteed and do not form a contract. Neither Jordan Fishwick nor the vendor or lessor accept any responsibility in respect of these particulars, which are not intended to be statements or representations of fact and any intending purchaser or lessee must satisfy himself by inspection or otherwise as to the correctness of each of the statements contained in these particulars. Any floorplans on this brochure are for illustrative purposes only and are not necessarily to scale.

Offices at: Chorlton, Didsbury, Disley, Hale, Glossop, Macclesfield, Manchester Deansgate, Manchester Whitworth Street, New Mills, Sale, Wilmslow and Withington

36-38 Alderley Rd, Wilmslow SK9 1JX
01625 536 300

wilmslow@jordanfishwick.co.uk
www.jordanfishwick.co.uk