



Castle House, Desborough Road, High Wycombe,

- NOW FURNISHED**
- EPC Rating - C
- Gated parking
- Well Presented apartment
- Fantastic location for town centre
- Available mid June 2026
- One bedroom apartment
- Suitable for single or couple
- Modern development
- High Wycombe central location

£1,025 PCM



Cameron Estate Agents
195 High Street,
Middlesex, Uxbridge, UB8 1LB

E: uxbridge@cameron.co
T: 01895252000

www.cameron.co

Whilst every care has been taken to ensure the accuracy of these particulars, none of the statements contained herein are to be relied upon as representations of fact. These particulars do not constitute an offer or contract.

Description

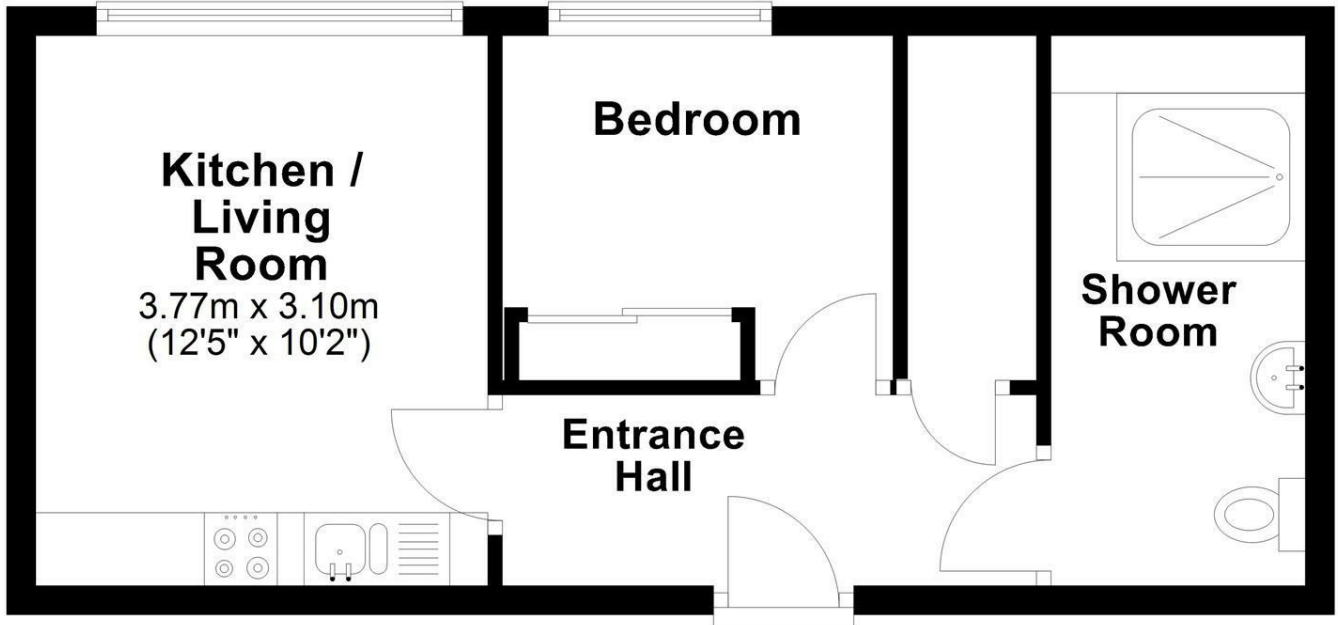
Cameron offer this newly converted, first floor, one bedroom apartment. This exciting and exclusive development is conveniently located within easy access to High Wycombe town centre and also to the M40 motorway. This property comprises of an open plan living/kitchen area, fully fitted and integrated kitchen with fridge freezer and dishwasher, separate bedroom and luxury shower-room. This apartment is available from Mid June 2026 and is presented FURNISHED.

IMPORTANT NOTICE

These particulars have been prepared upon information supplied by the Vendor and should be verified by your surveyors and solicitors. In accordance with the Property Misdescriptions Act 1991 we have prepared these sales particulars as a general guide to give a broad description of the property. They are not intended to constitute part of an offer or contract. We have not carried out a structural survey and the services, appliances and specific fittings have not been tested. All photographs, measurements, floor plans and distances referred to are given as a guide only and should not be relied upon for the purchase of carpets or any other fixtures or fittings. Lease details service charge and ground rent (where applicable) are given as a guide only and should be checked and confirmed by your solicitor prior to exchange of contract

First Floor

Approx. 32.9 sq. metres (353.7 sq. feet)



Total area: approx. 32.9 sq. metres (353.7 sq. feet)

Cameron



Whilst every care has been taken to ensure the accuracy of these particulars, none of the statements contained herein are to be relied upon as representations of fact. These particulars do not constitute an offer or contract.