



## Howard Road, NW2

### £550,000

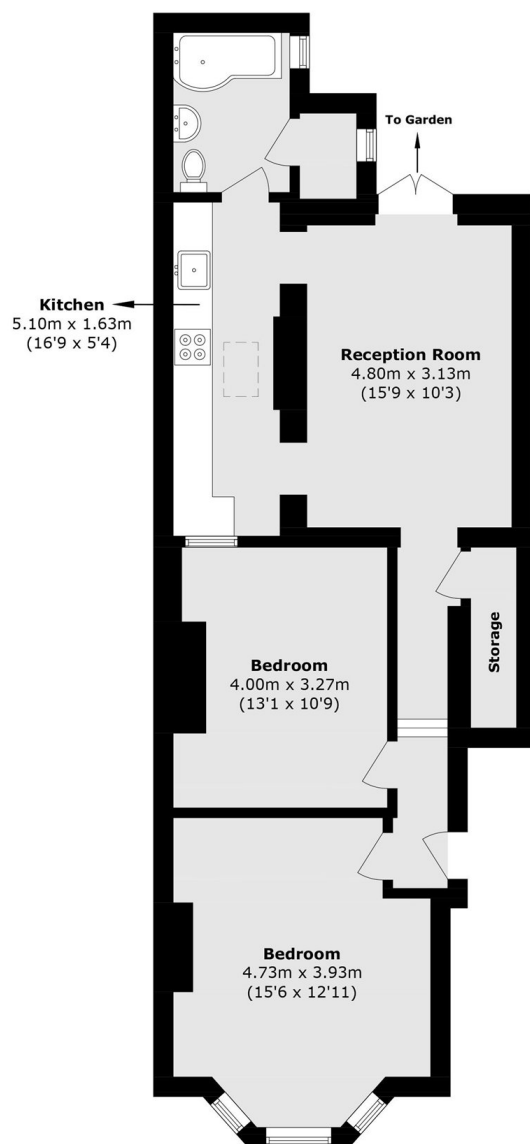
A fantastic two double bedroom, ground floor garden flat which has been refurbished throughout. The property offers over 756 sq ft of living space and benefits from a private garden and a chain free sale.

Howard Road is conveniently located close to local amenities, transport links and the ever-popular Gladstone Park. Willesden Green (Jubilee line), Cricklewood (Thameslink), the A406, M1 and A1 are all accessible close by.

### Features

- Ground Floor Flat
- Two Double Bedrooms
- Private Garden
- Fully Refurbished
- Over 756 sq ft
- Excellent Location For Transport

# Howard Road, London, NW2



Total area (approx.): 70.3 sq. m (756.7 sq. ft)