



HARRISON
Sales &
Lettings
ARDEN

Cottage Farm Court, Stretton On Fosse



Welcome to this charming three-bedroom semi-detached home, tucked away in a peaceful cul-de-sac within a highly desirable Cotswold village. Inside, a spacious open-plan living and dining area awaits, accented by characterful oak beams and a cosy log burner. Presenting a wonderful opportunity for cosmetic updates throughout, this property allows the next owner to truly make it their own and maximise its exceptional potential. Upstairs, all three bedrooms are complemented by a main bathroom and a private en-suite for comfortable convenience.

One of the real highlights of this property are the beautiful countryside vistas, which can be enjoyed from many rooms and the decked South-Westerly garden, which benefits from a little brook at the end, creating a true sense of rural living. The property also benefits from a handy double car port, ensuring parking is never an issue.

Perfectly situated, you are just a stroll from the friendly local pub and picturesque country walks. This home is ideal for anyone seeking a blend of village charm, tranquillity, and spacious living. Viewing is highly recommended to appreciate everything this special property has to offer.

Tenure: Freehold

Council Tax Band: D

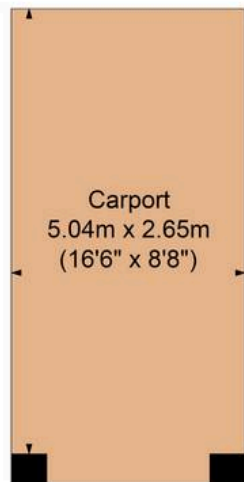
EPC: C

what3words:///pampered.shallower.officials

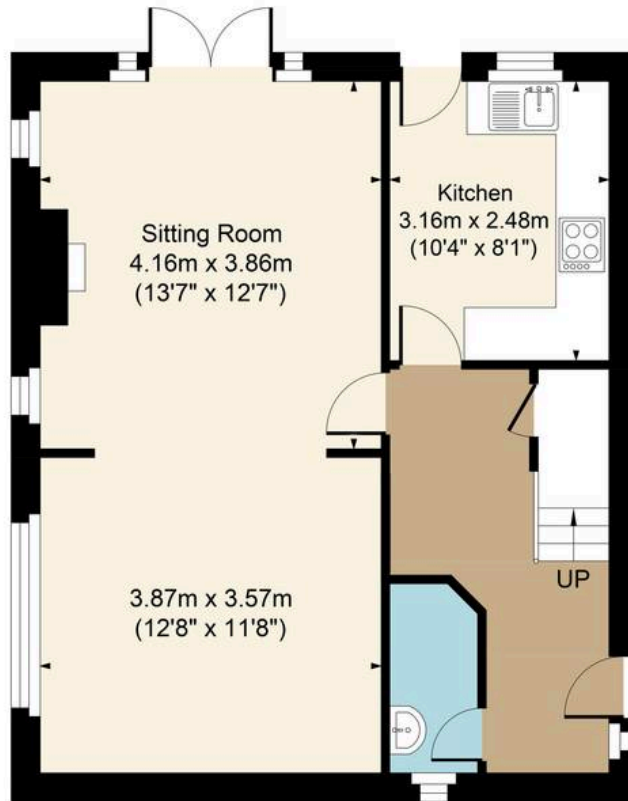




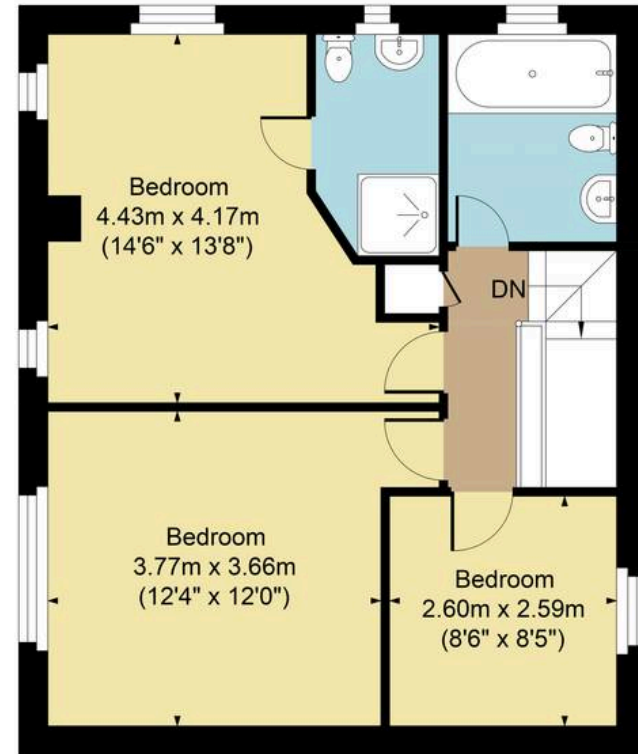
Main House Approx. Gross Internal Area:- 100.85 sq.m. 1085 sq.ft.
Carport Approx. Gross Area:- 13.36 sq.m. 144 sq.ft.
Total Approx. Gross Area:- 114.21 sq.m. 1229 sq.ft.



Carport



Ground Floor



First Floor

FOR ILLUSTRATIVE PURPOSES ONLY-NOT TO SCALE
The position & size of doors, windows, appliances and other features are approximate only.
□ □ □ Denotes restricted head height
www.dmlphotography.co.uk