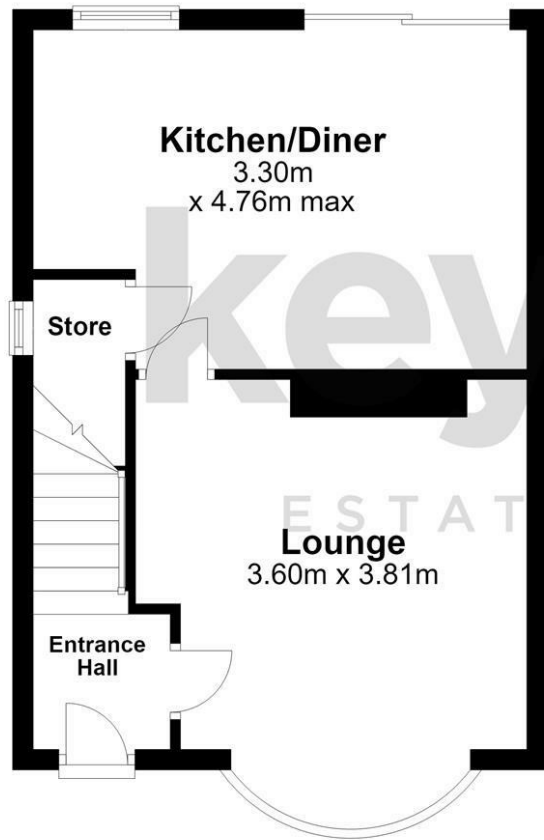
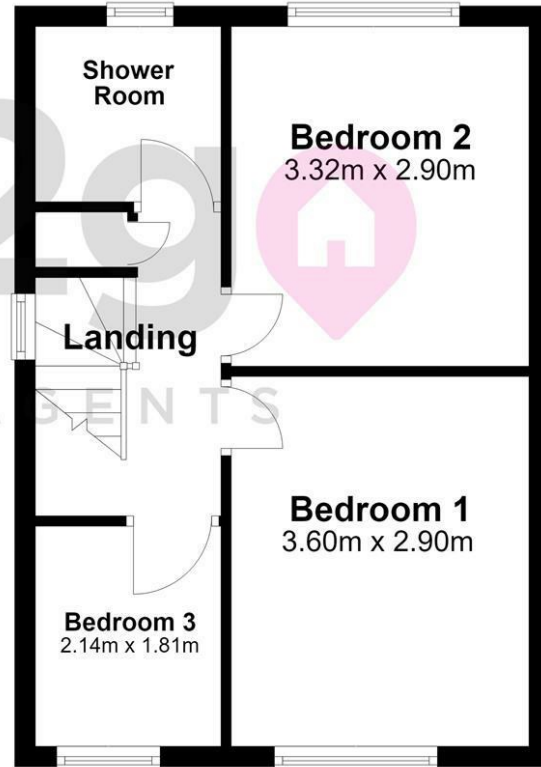


Ground Floor



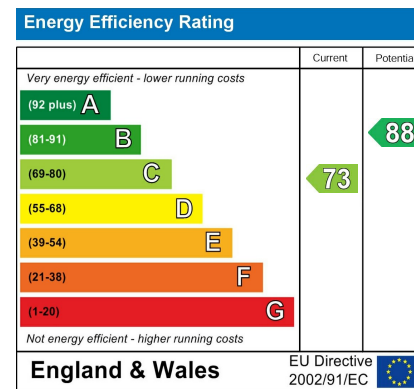
First Floor



Area Map



Energy Efficiency Graph



Viewing

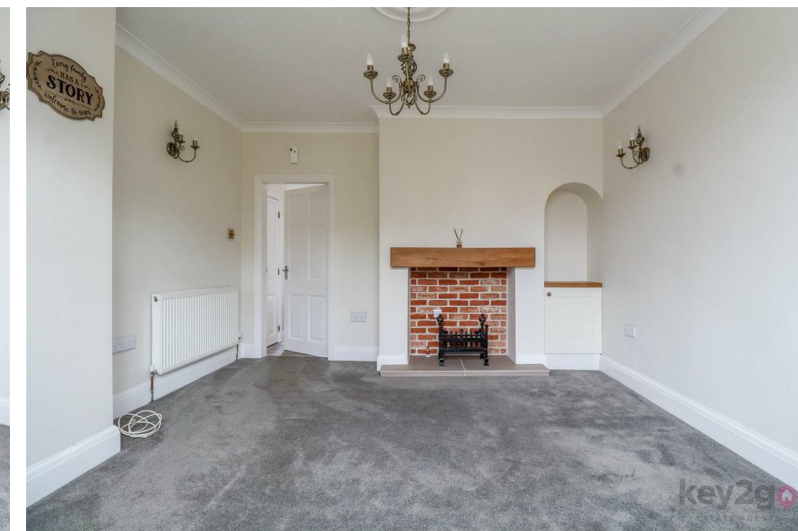
Please contact our Lettings Team Office on 0114 2478819 if you wish to arrange a viewing appointment for this property or require further information.

These particulars, whilst believed to be accurate are set out as a general outline only for guidance and do not constitute any part of an offer or contract. Intending purchasers should not rely on them as statements of representation of fact, but must satisfy themselves by inspection or otherwise as to their accuracy. No person in this firm's employment has the authority to make or give any representation or warranty in respect of the property.



17 Briarfield Road
Sheffield, S12 3LD

£1,100 PCM



17 Briarfield Road

Sheffield, S12 3LD

£1,100 PCM



Situated in a quiet cul-de-sac within a highly sought-after location, this stunning three-bedroom semi-detached home offers spacious and well-presented accommodation throughout.

The property features two reception rooms, a driveway, and a large enclosed rear garden with two sheds and a brick-built outhouse, providing excellent storage and versatile outdoor space.

Ideally positioned on the doorstep of the tram route, the property also benefits from excellent road links to Sheffield and Chesterfield, making it perfect for commuters.

An early viewing is highly recommended.

SUMMARY

Situated in a quiet cul-de-sac within a highly sought-after location, this stunning three-bedroom semi-detached home offers spacious and well-presented accommodation throughout.

The property features two reception rooms, a driveway complete with an EV charger, and a large enclosed rear garden with two sheds and a brick-built outhouse, providing excellent storage and versatile outdoor space.

Ideally positioned on the doorstep of the tram route, the property also benefits from excellent road links to Sheffield and Chesterfield, making it perfect for commuters.

An early viewing is highly recommended.

