



Woodville Road, W5

£560,000

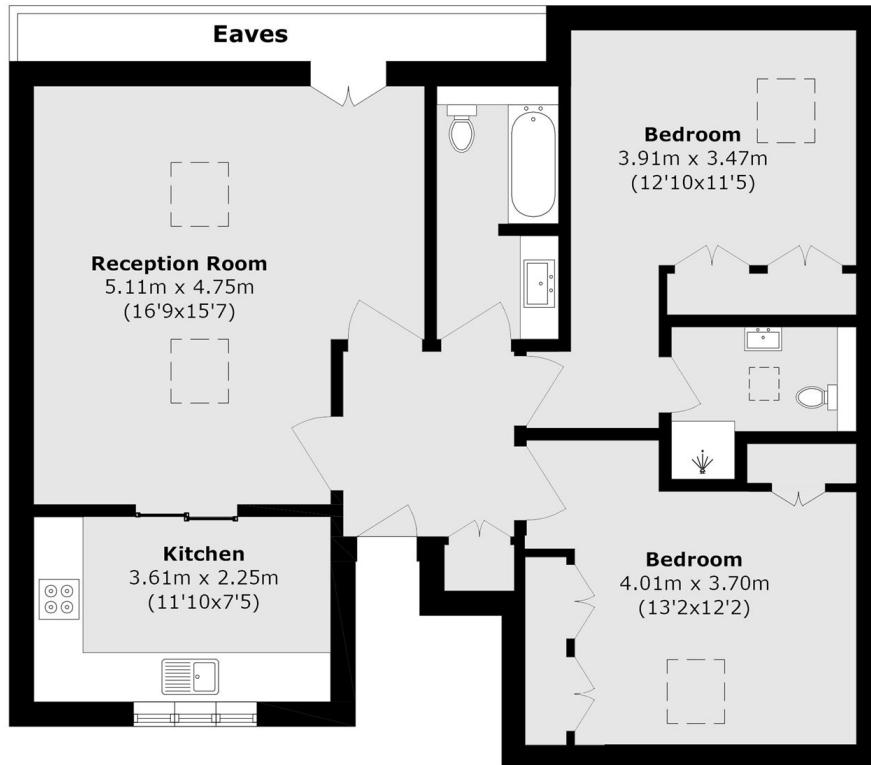
A beautifully presented two double bedroom, two bathroom period conversion occupying the entire top floor of an elegant Edwardian residence. The property features a spacious open-plan kitchen and living area, filled with natural light, and benefits from allocated parking to the front of the building.

Located on Woodville Road, just moments from Haven Green and Ealing Broadway station, the property benefits from excellent transport links including the Central Line, District Line, the Elizabeth Line, and National Rail services.

Features

- Two Double Bedrooms
- Two Bathrooms
- Open Plan Living/Kitchen
- Allocated Parking
- Close To Station
- Share Of Freehold

Woodville Road, London, W5



Total area (approx.): 75.1 sq. m (808.4 sq. ft)

(Excluding Eaves)