

Abercairn Road, Streatham Common, SW16

Guide Price £675,000

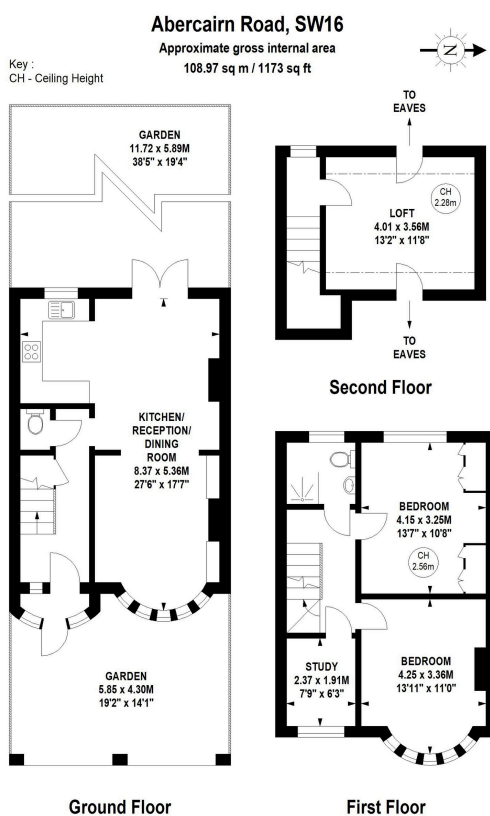
3 1 1



PLEASE QUOTE MR0560 – Beautifully presented three bedroom 1930's style family home (1,173 Sq.Ft) with delightful private garden backing onto a peaceful nature reserve, superbly situated in a corner plot in a quiet and highly sought after residential road close to Streatham Common station. Well maintained throughout, with additional potential for loft conversion/extension (STPP), the property offers bright and spacious accommodation with stylish interiors throughout – ideal for modern family life. Further features include impressive open plan ground floor living space including reception/dining areas and a well equipped kitchen, first floor shower room and ground floor WC, gas central heating, double glazing, ample inbuilt storage, neutral decor and quality floor coverings.

Key Features

- PLEASE QUOTE MR0560
- Beautiful Three Bedroom End of Terrace House (1,173 Sq.Ft)
- Corner Plot in Sought After Residential Road
- Spacious Accommodation with Stylish Interiors
- Fantastic Open Plan Reception/Diner/Kitchen
- First Floor Shower and Ground Floor WC
- Boarded Loft Space with Potential for Conversion STPP
- Delightful Private Garden
- Close to Streatham Common Station
- Easy Access Shops, Schools and Amenities



Although every attempt has been made to ensure accuracy, all measurements are approximate. This floorplan is for illustrative purposes only and not to scale. Measured in accordance with RICS standards.