



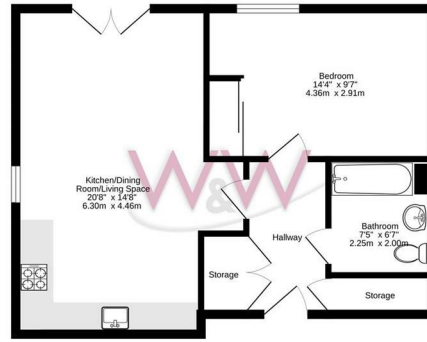
Bluebell House | Waterclose Way | Whiteley | PO15 7QS

£1,050 Per Month





Ground Floor
526 sq.ft. (48.9 sq.m.) approx.



TOTAL FLOOR AREA: 526 sq.ft. (48.9 sq.m.) approx.
Walker Waterer & Waterer Ltd. is not responsible for the accuracy of the information provided here. Information is provided for general guidance only. It is recommended that you seek professional advice before making any decision. The accuracy, reliability and completeness of the information is not guaranteed. © Walker Waterer & Waterer Ltd. 2026

| Energy Efficiency Rating | | |
|---|-------------------------|-----------|
| | Current | Potential |
| Very energy efficient - lower running costs | | |
| (92 plus) A | | |
| (81-91) B | | |
| (69-80) C | | |
| (55-68) D | 74 | 74 |
| (39-54) E | | |
| (21-38) F | | |
| (1-20) G | | |
| Not energy efficient - higher running costs | | |
| England & Wales | EU Directive 2002/91/EC | |



Description

Welcome to Bluebell House in the charming area of Whiteley! This delightful apartment boasts a light and airy open plan living space. The modern kitchen comes complete with a dishwasher and fridge freezer, there is also a washer dryer located in the large storage cupboard in the hallway. With one spacious bedroom. The property also features a modern bathroom.

Situated in a convenient location, with Whiteley Shopping Centre offering a choice of shopping and restaurants and a cinema. Bluebell House offers allocated parking for one vehicle.

Don't miss out on the chance of this lovely modern apartment and call to day to secure your viewing.

Key features



H3 Whiteley Shopping Centre
Whiteley Way
Whiteley
Hants
PO15 7PD
01489 580800
pm@walkerwaterer.co.uk
www.walkerwaterer.co.uk