



Hollandbury House

4 Brent Way, TW8

Asking Price £450,000

Stylish one-bedroom apartment in Hollandbury House with balcony, garden views and premium facilities

CHESTERTONS



Hollandbury House

4 Brent Way, TW8

- One bedroom, one bathroom
- Roof terrace
- Private balcony
- Resident facilities



Set within the highly regarded Ballymore-designed Hollandbury House at The Brentford Project, this stylish one-bedroom apartment offers contemporary waterside living in one of Brentford's most exciting and fast-developing locations. The building makes an immediate impression with striking architecture, high ceilings, elegant glass lifts, automatic entrance and corridor doors, and a premium sense of arrival throughout.

Located on the second floor, the apartment enjoys a particularly attractive outlook from the living room over a beautiful landscaped garden, with a secure road separating the two buildings. This gives the home a bright, open and peaceful feel, and the garden view can be enjoyed comfortably from inside the living space.

Residents benefit from outstanding lifestyle amenities, including a two-floor gym, heated swimming pool, dry sauna, steam sauna, residents' lounge and co-working spaces, as well as roof access with impressive views across the canal and towards Syon Park. The development also offers a very special, modern environment designed for convenience, comfort and wellbeing.

The Brentford Project is part of a major regeneration area, with the surrounding neighbourhood continuing to evolve through new businesses, amenities and waterside attractions. This makes the property an excellent choice for both owner-occupiers and investors seeking a design-led home with strong long-term appeal in a highly desirable location.

Tenure: Leasehold 994 years 10 months
Service Charge: £4416 Sinking fund
Ground Rent: £0
Local Authority: London Borough of Hounslow
Council Tax Band: D

Score	Energy rating	Current	Potential
92+	A		
81-91	B	85 B	85 B
69-80	C		
55-68	D		
39-54	E		
21-38	F		
1-20	G		

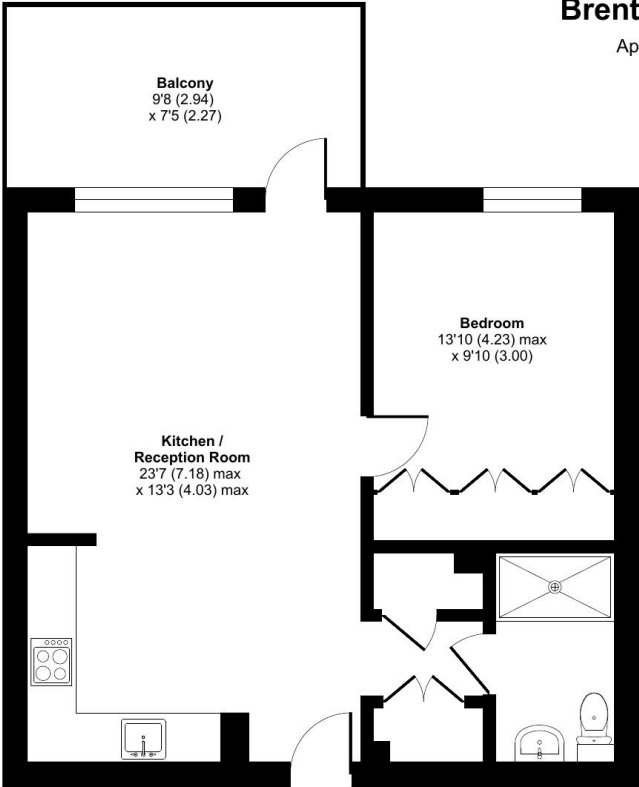
Chestertons Kew Sales

1 Royal Parade
 Kew
 Richmond
 TW9 3QD
 kew@chestertons.co.uk
 020 8104 0340
 chestertons.co.uk

Brent Way, Brentford, TW8

Approximate Area = 544 sq ft / 50.6 sq m

For identification only - Not to scale



SECOND FLOOR

 Floor plan produced in accordance with RICS Property Measurement 2nd Edition, Incorporating International Property Measurement Standards (IPMS2 Residential). © nichecom 2026. Produced for Chestertons REF: 1442708



This paper is 100% recyclable