

Wheatsheaf Court, Knighton Fields

£190,000

A MODERN STYLE property located within the complex of Wheatsheaf Works. The accommodation is presented over three floors to include TWO BEDROOMS, shower room and a separate bathroom. Secure parking.

Council Tax band: B

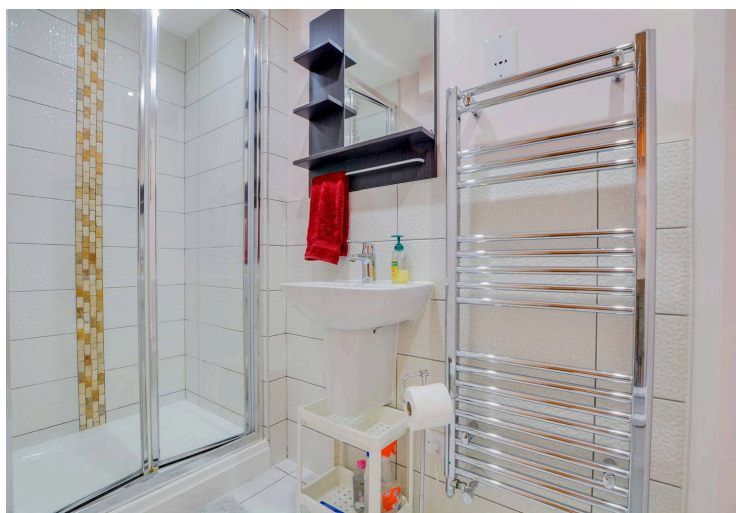
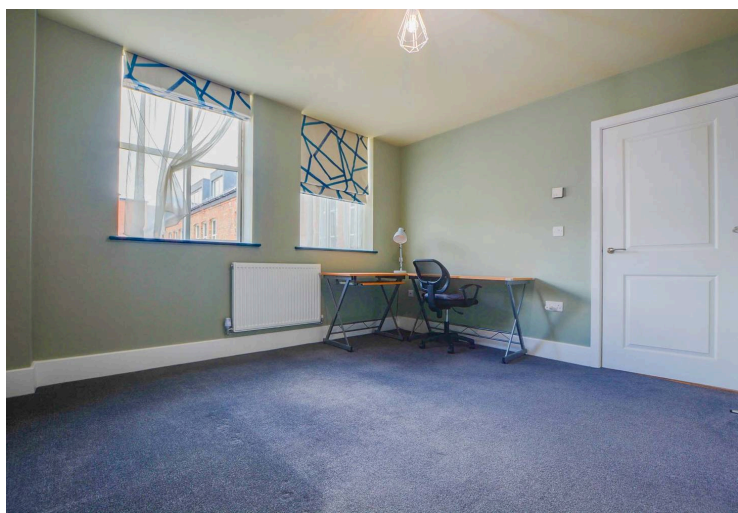
Tenure: Leasehold

EPC Energy Efficiency Rating: C



0116 274 5544





Entrance Lobby

With radiator, stairs to first floor.

Entrance Hall

With under stairs storage cupboard having plumbing for washing machine.

Bedroom

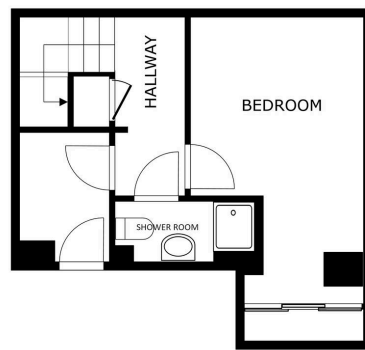
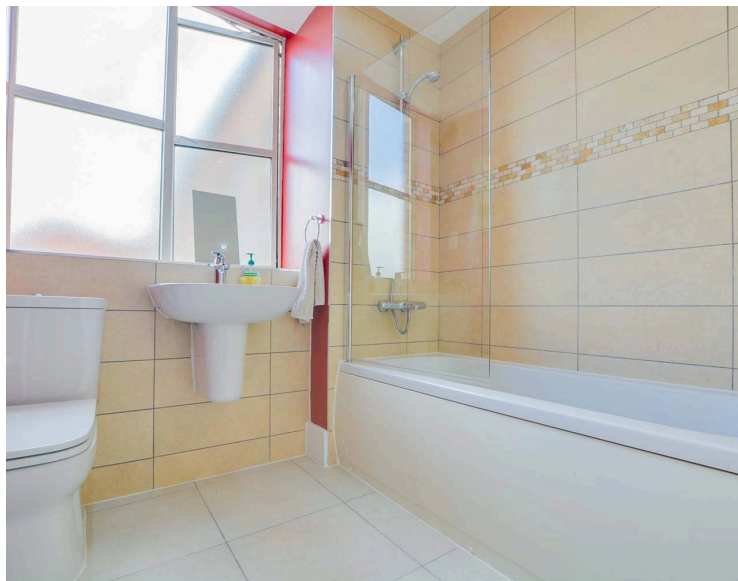
16' 9" x 9' 10" (5.11m x 3.00m)

Measurement plus wardrobe space. With built-in sliding mirrored wardrobes, radiator.

Shower Room

8' 3" x 3' 3" (2.51m x 0.99m)

With low-level WC, wash hand basin, tiled shower cubicle, inset ceiling spotlights, extractor fan, heated chrome towel rail.



FLOOR 1

SIZES AND DIMENSIONS ARE APPROXIMATE, ACTUAL MAY VARY.

Matterport

First Floor

With access to the following rooms:

Open Plan Living Kitchen Dining Room

20' 0" x 14' 9" (6.10m x 4.50m)

Measurement narrowing to 14'. With double glazed door to rear garden, double glazed window to the rear elevation, high ceiling with beams, lower ceiling with inset spotlights, stainless steel sink and drainer unit with a range of wall and base units with work surface over, built-in oven and hob, built-in fridge and freezer, built-in dishwasher, part tiled floor, two radiators.

Second Floor

With access to the following rooms:

Bedroom Two

13' 9" x 12' 4" (4.19m x 3.76m)

With double glazed window to the rear elevation, airing cupboard, radiator.

Bathroom

7' 2" x 7' 2" (2.18m x 2.18m)

With double glazed window to the rear elevation, bath with shower over, wash hand basin, low-level WC, inset ceiling spotlights, extractor fan, tiled floor, heated chrome towel rail.

Rear Garden

With AstroTurf lawn, gated access to communal decked area.

Allocated Parking

Located in the communal basement car park.

Lease Details

Current Ground Rent: £383 per year

Current Service Charge: £900 twice a year

Length of Lease: 114 years remaining



FLOOR 2

SIZES AND DIMENSIONS ARE APPROXIMATE, ACTUAL MAY VARY.



FLOOR 3

SIZES AND DIMENSIONS ARE APPROXIMATE, ACTUAL MAY VARY.



We'll keep you moving...



We must inform all prospective purchasers that the measurements are taken by an electronic take and are provided as a guide only and they should not be used as accurate measurements. We have not tested any mains services, gas or electric appliances, or fixtures and fittings mentioned in these details, therefore, prospective purchasers should satisfy themselves before committing to purchase. Intending purchasers must satisfy themselves by inspection or otherwise to the correctness of the statements contained in these particulars. Knightsbridge Estate Agents (nor any person in their employment) has any authority to make any representation or warranty in relation to the property. The floor plans are not to scale, and are intended for use as a guide to the layout of the property only. They should not be used for any other purpose. We are required by law to conduct anti-money laundering checks on all those selling or buying a property. Whilst we retain responsibility for ensuring checks and any ongoing monitoring are carried out correctly, the initial checks are carried out on our behalf by Lifetime Legal who will contact you once you have agreed to instruct us in your sale or had an offer accepted on a property you wish to buy. The cost of these checks is £60 (incl. VAT), which covers the cost of obtaining relevant data and any manual checks and monitoring which might be required. This fee will need to be paid by you in advance of us publishing your property (in the case of a vendor) or issuing a memorandum of sale (in the case of a buyer), directly to Lifetime Legal, and is non-refundable. We will receive some of the fee taken by Lifetime Legal to compensate for its role in the provision of these checks.