

## Hollywood Lane, Hollywood, Birmingham, B47 5PT

Offers Over £750,000

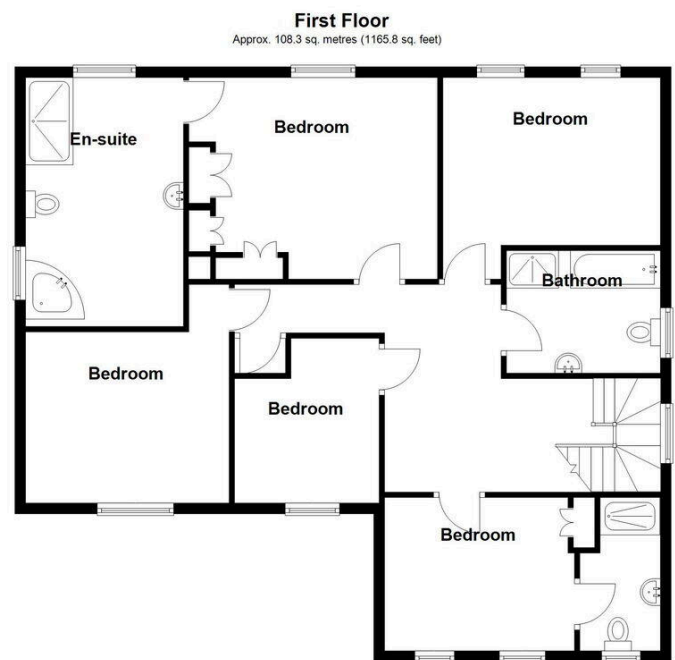
🛏 5 📄 3 🚗 4



An impressive and beautifully presented detached family home set in one of the area's most desirable locations. Enjoying a generous block-paved driveway, integral garage and landscaped south-facing garden, this exceptional property offers versatile living space including three reception rooms, a stunning re-fitted dining kitchen with utility, and five well-proportioned bedrooms—two with en-suites. Finished to a high standard throughout, this is an ideal home for families seeking style, comfort and convenience.

## Key Features

- Distinguished detached family home in a highly desirable location
- Integral garage and neatly maintained fore garden
- Three reception rooms: lounge, dining room and cosy snug
- Stunning re-fitted dining kitchen with modern units, integrated appliances and breakfast bar
- Two contemporary en-suite shower rooms
- Set back from the road with generous block-paved driveway
- Striking entrance hall with oak internal doors
- Additional playroom/study from partial garage conversion
- Five spacious bedrooms
- Beautifully landscaped south-facing rear garden with well-stocked borders



Total area: approx. 249.5 sq. metres (2685.4 sq. feet)