



Mansion Crescent, Smethwick B67 6QW

welcome to

Mansion Crescent, Smethwick

WELL PRESENTED AND MUCH IMPROVED 3 BEDROOM END TERRACE FAMILY HOME WITHIN THIS POPULAR LOCATION WITH A VERY LARGE GARDEN FOR ENTERTAINING AND SPACIOUS DRIVE WAY

Agent Note

This property is council tax band B.

Entrance Porch

Small step up into porch door, tiled floor, front door into living room.

Living Room

17' 2" x 15' 3" including bay. (5.23m x 4.65m including bay.)

Double glazed bay window to front, 2 central heating radiator, laminate flooring, ceiling spotlights, stairs to first floor, door into kitchen.

Kitchen

17' 2" x 10' (5.23m x 3.05m)

(Irregular shape) Double glazed window & door to rear, central heating radiator, ceramic tiling to floor, splash-back, sink & drainer with mixer tap, storage cupboard built in, space for American fridge freezer, integrated oven & hob with extractor hood over and stainless steel splash-back, ceiling light connection, access to w/c.

W/C

4' 4" x 2' 6" (1.32m x 0.76m)

Double glazed frosted window, low level flush w/c, wash hand basin, part tiled.

Landing

Double glazed window to side, boiler cupboard, doors to three bedrooms & bathroom, carpet on landing & stairs.

Bedroom 1

10' 9" x 9' 11" (3.28m x 3.02m)

Double glazed window to rear, central heating radiator, laminate flooring, ceiling light connection, built in wardrobes.

Bedroom 2

10' x 9' 8" (3.05m x 2.95m)

Double glazed window to front, central heating radiator, laminate flooring, ceiling light connection, built in wardrobes.

Bedroom 3

8' 9" x 8' 4" (2.67m x 2.54m)

Double glazed window to front, central heating radiator, carpet, ceiling light connection.

Bathroom

5' 11" x 5' 3" (1.80m x 1.60m)

Double glazed frosted window to rear, part tiled walls & tiled floor, low level flush w/c, wash hand basin with hot & cold taps, bath with shower over & shower curtain.

Front Garden

Block paved driveway, side entry to rear garden, fencing on both sides.

Rear Garden

Side gate to front garden, large lawned area, part decking, large summer house at rear of garden, block paved patio area at rear of garden, fencing surrounds for privacy.

Parking

Driveway.





check out more properties at shipways.co.uk



welcome to

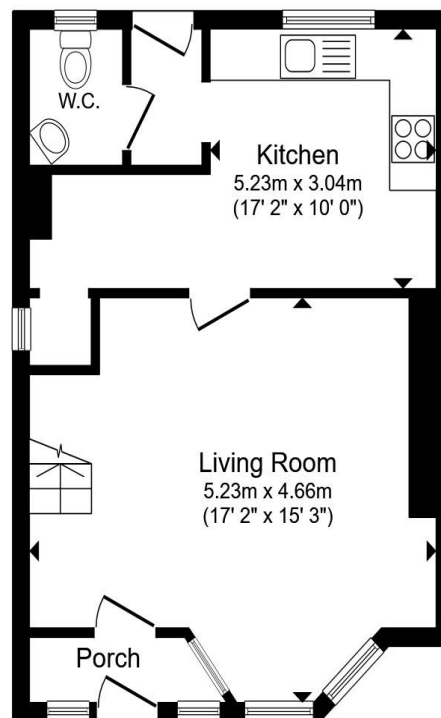
Mansion Crescent, Smethwick

- Three Bedroom End Terrace
- Well Presented Throughout
- Downstairs WC
- Open Plan Lounge/Kitchen
- Driveway With Space For Off Road Parking

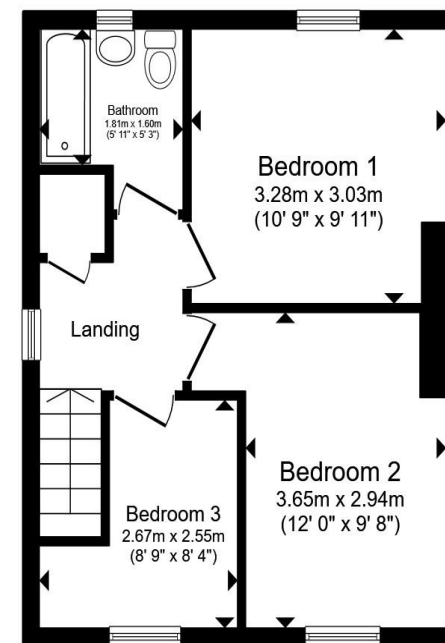
Tenure: Freehold EPC Rating: C

Council Tax Band: B

£215,000



Ground Floor



First Floor

Total floor area 76.9 m² (828 sq.ft.) approx

This floor plan is for illustrative purposes only. It is not drawn to scale. Any measurements, floor areas (including any total floor area), openings and orientation are approximate. No details are guaranteed, they cannot be relied upon for any purpose and they do not form part of any agreement. No liability is taken for any error, omission or misstatement. A party must rely upon its own inspection(s). Powered by www.propertybox.io



check out more properties at shipways.co.uk



Property Ref:
HBN112369 - 0002

1. MONEY LAUNDERING REGULATIONS Intending purchasers will be asked to produce identification documentation at a later stage and we would ask for your co-operation in order that there is no delay in agreeing the sale. 2. These particulars do not constitute part or all of an offer or contract. 3. The measurements indicated are supplied for guidance only and as such must be considered incorrect. Potential buyers are advised to recheck measurements before committing to any expense. 4. We have not tested any apparatus, equipment, fixtures or services and it is in the buyers interest to check the working condition of any appliances. 5. Where an EPC, or a Home Report (Scotland only) is held for this property, it is available for inspection at the branch by appointment. If you require a printed version of a Home Report, you will need to pay a reasonable production charge reflecting printing and other costs. 6. We are not able to offer an opinion either written or verbal on the content of these reports and this must be obtained from your legal representative. 7. Whilst we take care in preparing these reports, a buyer should ensure that his/her legal representative confirms as soon as possible all matters relating to title including the extent and boundaries of the property and other important matters before exchange of contracts.

Shipways is a trading name of Sequence (UK) Limited which is registered in England and Wales under company number 4268443, Registered Office is Cumbria House, 16-20 Hockliffe Street, Leighton Buzzard, Bedfordshire, LU7 1GN. VAT Registration Number is 500 2481 05.

Not for marketing purposes INTERNAL USE ONLY



0121 427 3264



harborne@shipways.co.uk



172 High Street, Harborne, BIRMINGHAM,
West Midlands, B17 9PP



shipways.co.uk