



Guide Price
£300,000

Freehold

3x  1x  1x 

**Loudon Path, Ashford,
Kent, TN23**

OVER 60?

Secure this property
for up to **59% less!**

Wards
Helping you move forwards



Main features

- Chain free
- Outbuilding with electricity
- Garage en-bloc with allocated parking
- Good sized rear garden
- Close by to schools, amenities and Ashford town centre

Accommodation

GROUND FLOOR

Entrance Hall

Lounge: 15'8 x 11'0 (4.78m x 3.36m)

Diner: 9'2 x 6'5 (2.80m x 1.96m)

Kitchen: 9'0 x 7'5 (2.75m x 2.26m)

FIRST FLOOR

Landing

Shower Room: 6'2 x 6'0 (1.88m x 1.83m)

Bedroom 2: 9'3 x 8'2 (2.82m x 2.49m)

Bedroom 1: 11'6 x 8'4 (3.51m x 2.54m)

Bedroom 3: 7'2 x 5'9 (2.19m x 1.75m)

OUTSIDE

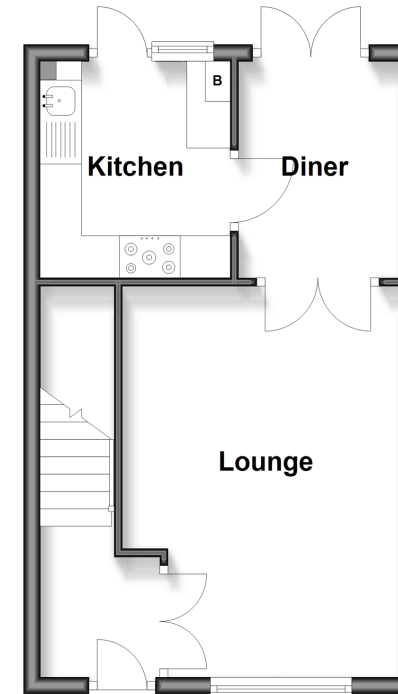
Out building: 13'2 x 10'7 (4.02m x 3.23m)

Garage

Allocated Parking Space

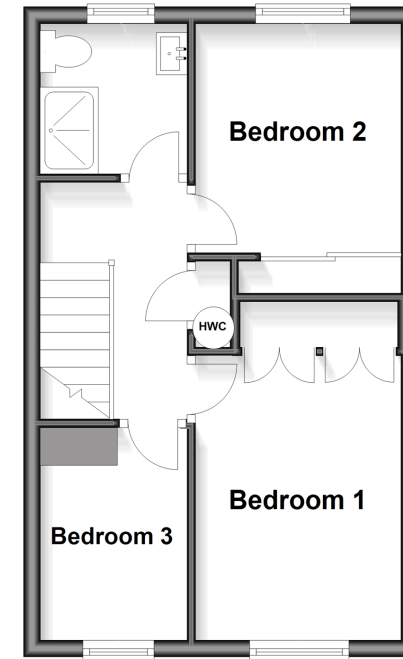
Ground Floor

Approx. 31.9 sq. metres (343.7 sq. feet)



First Floor

Approx. 32.0 sq. metres (344.4 sq. feet)



Call Ashford - 01233 639531 ■ wardsof Kent.co.uk

- Legal advice should be taken to verify fixtures/fittings, planning, alterations and/or lease details
- Appliances & services are untested, dimensions are approximate and floor plans are not to scale
- Through a Homewise Home For Life Plan people aged 60+ can secure this property for up to 50% less, by purchasing a Lifetime Lease.



12243302/20250925/JJ/RB