

# Colin Dean Residential

in partnership with Dexters



## Sudbury Court Drive, HA1

£4,000 pcm

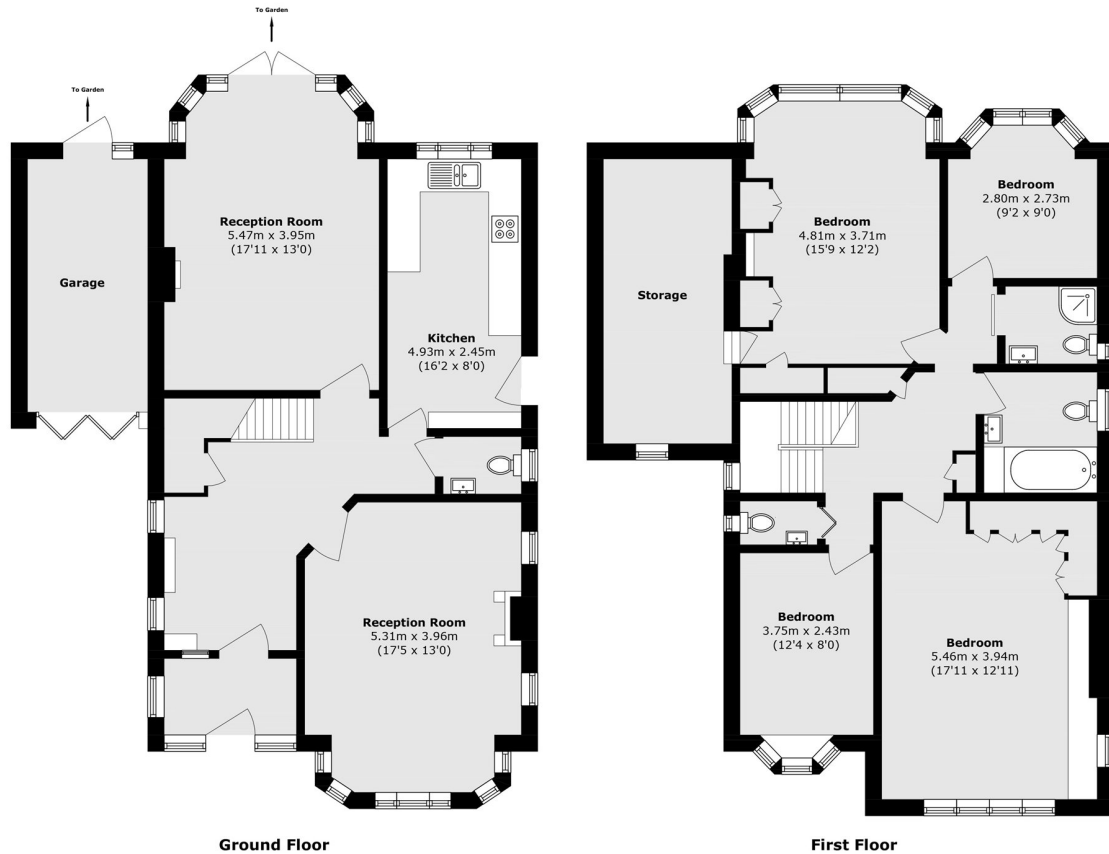
This beautifully presented four-bedroom detached family home is situated on a peaceful residential road. The property offers four well-proportioned bedrooms and two modern bathrooms. The ground floor features two bright and spacious reception rooms, a convenient guest W/C, and a large eat-in kitchen with integrated appliances, providing direct access to a well-maintained private garden, ideal for entertaining and family living. Further benefits include off-street parking. Energy Rating: D.

The property is ideally situated on a quiet residential street, with local shops, bus routes, and well-regarded schools nearby. Sudbury Hill Harrow Station is approximately 0.7 miles away, providing access to the Overground and Piccadilly lines.

- Detached Family Home, 1,808sqft • Four Bedrooms • Two Bathrooms •
- Two Living Receptions • Large Private Garden • Off Street Parking •

# Colin Dean Residential

in partnership with Dexters



Total area (approx.): 168.0 sq. m (1808.4 sq. ft)  
(Excluding Garage)

Colin Dean Residential  
350 Pinner Road,  
Harrow, HA1 4LB  
020 8515 7929  
daniel.murray@colindean.com

Energy Rating: D We aim to make our particulars both accurate and reliable. However they are not guaranteed; nor do they form part of an offer or contract. If you require clarification on any points then please contact us, especially if you're travelling some distance to view. Please note that appliances and heating systems have not been tested and therefore no warranties can be given as to their good working order.