

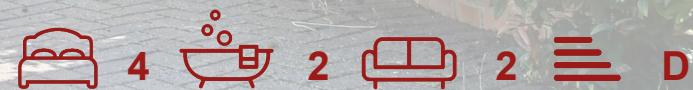
shepherds
A better home
moving experience



5 Woodlands Road

Hertford, SG13 7JE

Price Guide £635,000



5 Woodlands Road

Hertford, SG13 7JE

Stylish 1930s Four-Bedroom Semi with Stunning Views - CHAIN FREE

This extended 1930s semi-detached home perfectly blends character and modern comfort, offering four generous double bedrooms and plenty of space for family living. Bright, airy, and beautifully presented throughout, the house is enhanced by charming bay windows, two inviting reception rooms, and a handy downstairs cloakroom.

Upstairs, three spacious doubles are complemented by a sleek family bathroom, while the top floor boasts a fabulous master suite with built-in wardrobes, a stylish ensuite, and elevated views stretching across the rear garden and beyond.

Step outside and discover a delightful two-tier garden — an upper patio for entertaining with a view, and a lower lawn for play and relaxation — plus a large garden store. A driveway to the front completes the picture. Offered chain free, this is a standout home ready to move straight into.

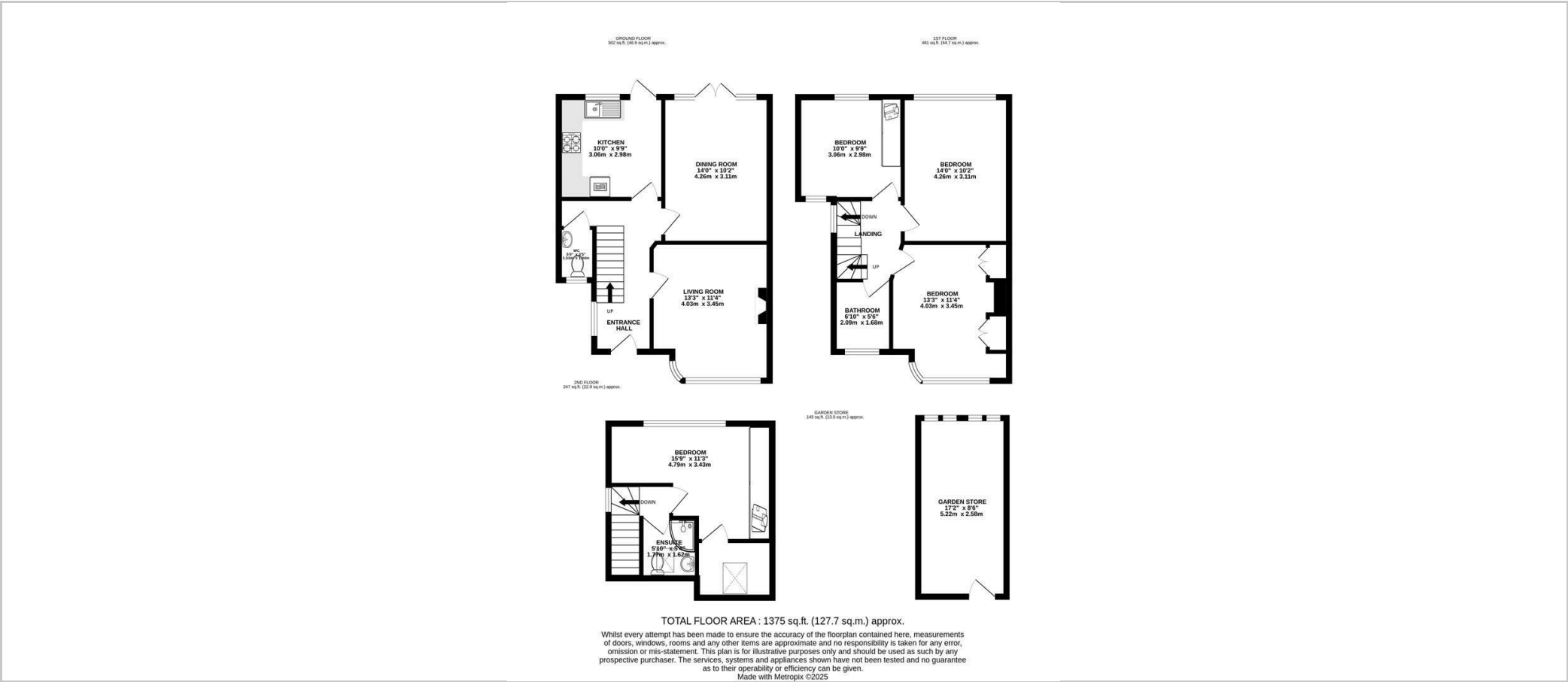




- Four double bedroom extended semi-detached 1930's house
- Beautifully presented throughout and arranged over three levels
- Stunning panoramic views to the rear
- Two reception rooms
- First floor main family bathroom plus further en-suite shower room and additional ground floor cloakroom
- Two level garden to rear with raised paved patio with views and lower garden laid to lawn
- Off street parking to the front
- 17' garden store
- OFFERED CHAIN FREE
- The vendor has a structural engineer's report confirming that the kitchen can be opened into the rear reception room to create a spacious open-plan kitchen-diner



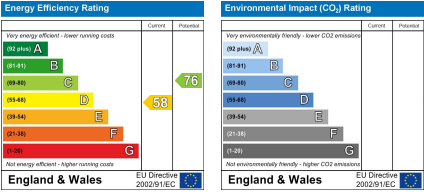
Floor Plan



Viewing

Please contact Shepherds of Hertford on 01992 551955 if you wish to arrange a viewing appointment for this property or require further information.

Energy Performance Graph



These particulars, whilst believed to be accurate are set out as a general outline only for guidance and do not constitute any part of an offer or contract. Intending purchasers should not rely on them as statements of representation of fact, but must satisfy themselves by inspection or otherwise as to their accuracy. No person in this firms employment has the authority to make or give any representation or warranty in respect of the property.

Riverside House, 6 Millbridge, Hertford, SG14 1PY
Tel: 01992 551955 Email: enquiries@shepherdsofhertford.co.uk