



Queen Elizabeths Walk, N16 5UG
£675,000

**DAVID
ANDREW**

your
most
valuable
asset

Queen Elizabeths Walk, N16 5UG

Introducing a bright and spacious two double bedroom top floor apartment set within a period conversion on Queen Elizabeths Walk. The property offers approximately 870 sq ft / 81 sq m of internal space and has been recently renovated. Arranged over split levels, the property features a large open plan kitchen and reception room with plenty of natural light and beautiful views towards the reservoir. There are two generous double bedrooms and two modern bathrooms. The property is located on a quiet no through road close to the shops, cafés and restaurants of Stoke Newington. Green spaces nearby include Clissold Park, Finsbury Park and Woodberry Wetlands. Excellent transport links are available via the London Overground, Victoria line, Piccadilly line and National Rail services, as well as regular bus routes nearby.

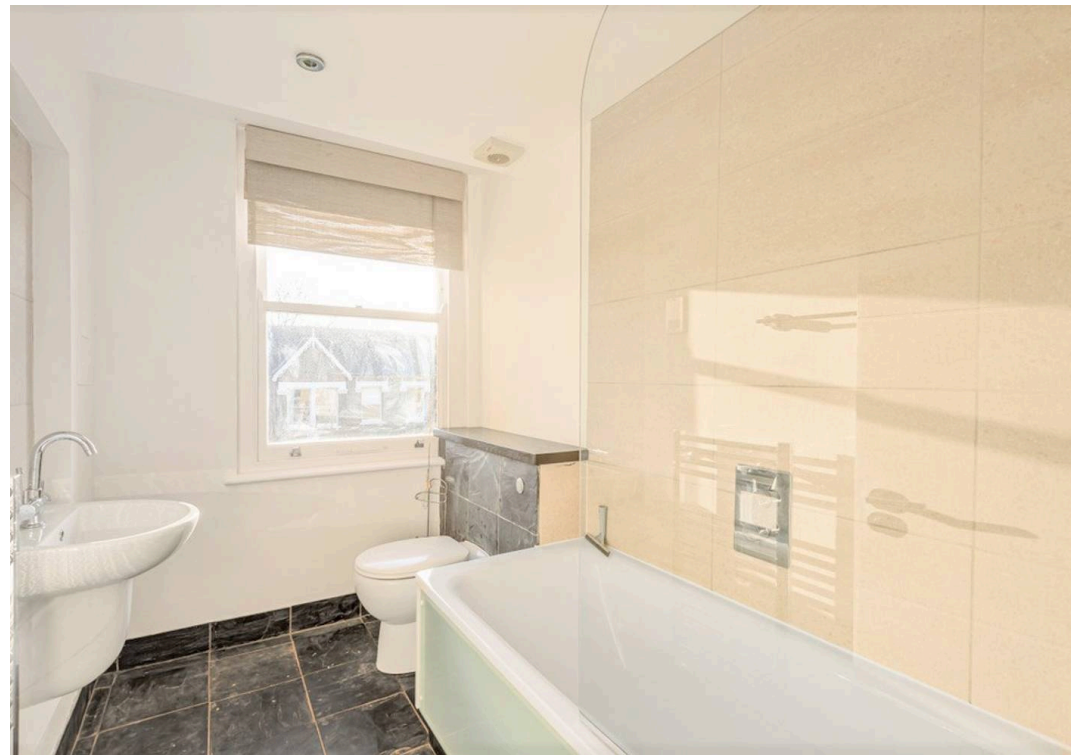
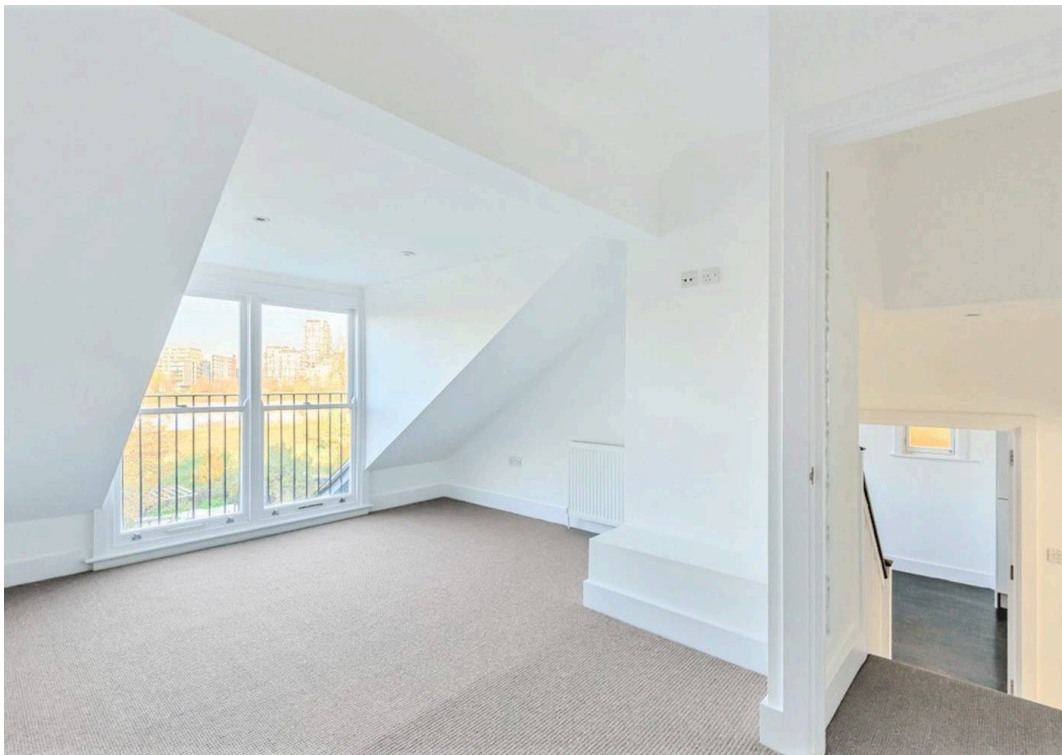
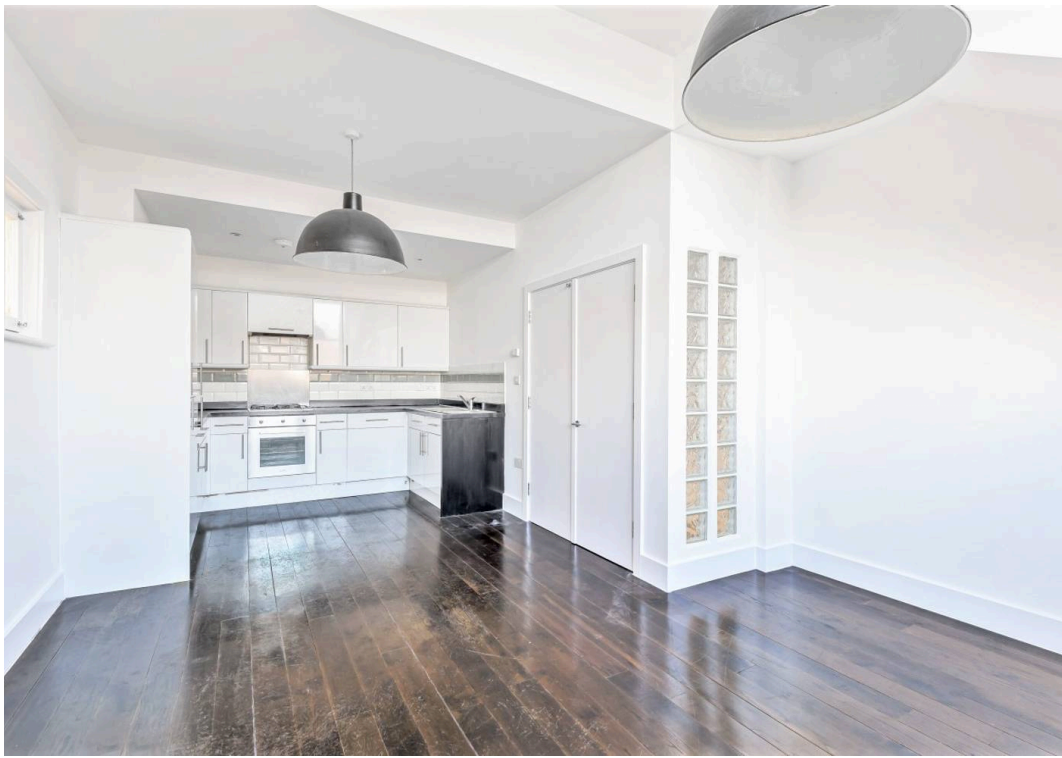
Council Tax band: D

Tenure: Share of Freehold

EPC Energy Efficiency Rating: C

- Approximately 870 sq ft / 81 sq m
- Views overlooking the reservoir
- Two generous double bedrooms
- Bright open-plan kitchen and reception room
- High ceilings and large windows providing excellent natural light
- Easy access to Clissold Park, Finsbury Park and Woodberry Wetlands
- Excellent transport links including Victoria Line, Piccadilly Line and Overground
- Close to Stoke Newington shops, cafés and restaurants





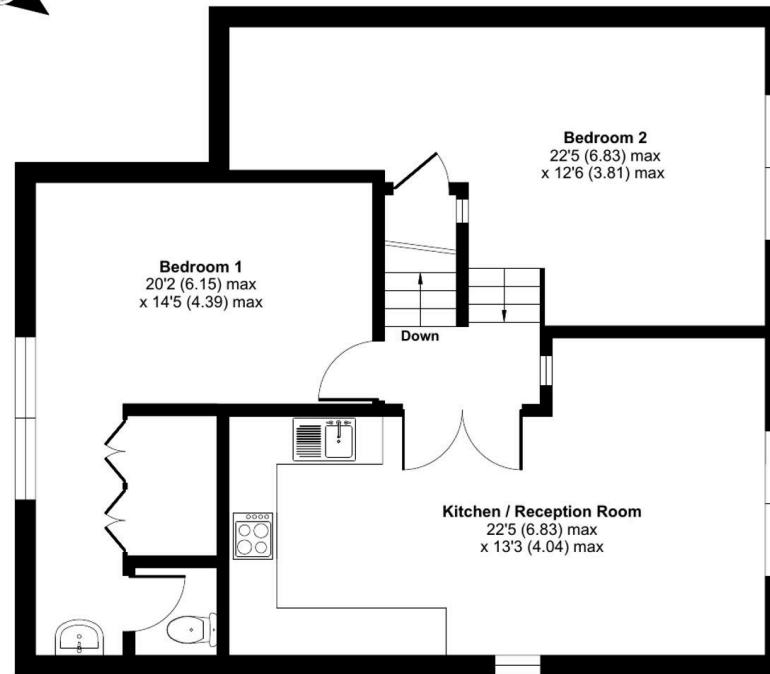


Queen Elizabeths Walk, London, N16

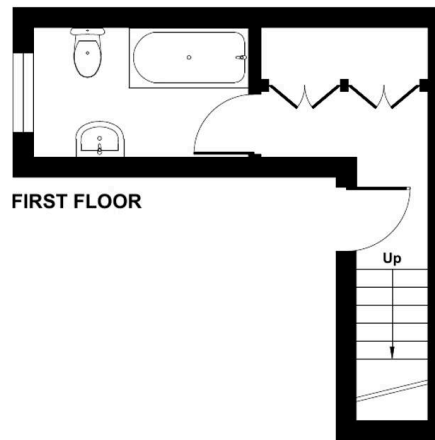
Approximate Area = 870 sq ft / 81 sq m

For identification only - Not to scale

DAVID ANDREW | your most valuable asset



SECOND FLOOR



FIRST FLOOR

Archway Office

671 Holloway Road
London, N19 5SE

T (0)20 7619 3750

Highbury Office

90 Highbury Park
London, N5 2XE

T (0)20 7354 9111

Finsbury Park Office

167 Stroud Green Road
London, N4 3PZ

T (0)20 7281 2000

Property Management Office

235 Blackstock Road
London, N5 2LL

T (0)20 7354 9222

scan to book a viewing



Floor plan produced in accordance with RICS Property Measurement Standards incorporating International Property Measurement Standards (IPMS2 Residential). © nlc/hecrom 2022. Produced for David Andrew. REF: 930258



has been exercised in the of these particulars, about the property must not be on as representations of or fact. Prospective applicants e and rely upon their own and those of professional ives. David Andrew Estates liability for any error contained in these particulars.

