

**Bewley Street
Wimbledon, SW19 1XB**

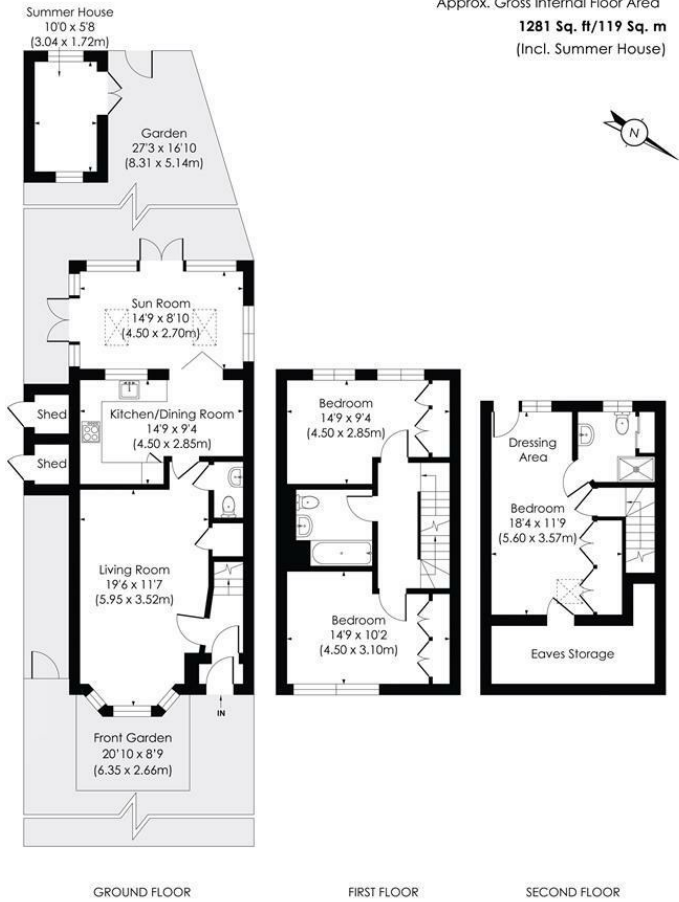
Guide Price £825,000 Freehold



A wonderful end of terrace three bedroom modern townhouse situated on a quiet road within a short walk of fantastic commuter routes. The property is arranged over three floor and boasts a great finish throughout having been cared for by its current owner as well as private off street parking. Additionally the River Wandle is close by allowing access to the Wandle Trail cycling trail and nature walk. Early viewings are highly recommended.

BEWLEY STREET, SW19

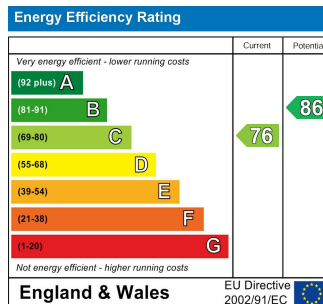
Approx. Gross Internal Floor Area
1281 Sq. ft/119 Sq. m
 (Incl. Summer House)



This floor plan has been prepared for the purpose of illustration only in accordance with the latest RICS code of measuring practice and is not to scale. All measurements and areas are approximate and whilst every effort has been made to ensure the accuracy of the plan contained here, no responsibility is taken for any error, omission or misstatement.



- Modern Townhouse Set in a Quiet Location
- Three Bedrooms
- Private Off Street Parking
- Spacious Accommodation Arranged Over Three Floors
- Garden Room
- Close Proximity to the River Wandle
- Excellent Commuter Routes
- Freehold
- EPC Rating C
- Council Tax Band D



For Free Mortgage Quote and Best Mortgage Rates, call an Ellisons Mortgage Advisor on 020 8944 9494



Although these particulars are believed to be correct, their accuracy is not guaranteed and they do not form part of any contract.

Celebrating 30 years of successful Sales and Lettings in Merton

