

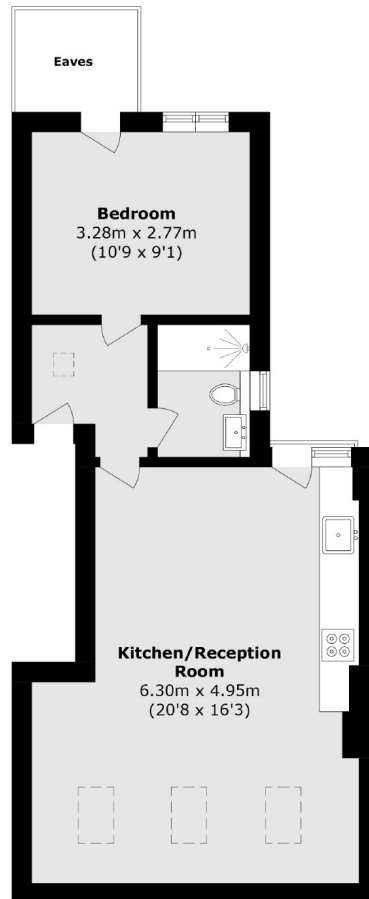


Shalimar Gardens, W3

£335,000

A newly converted flat on the top floor of an imposing Edwardian house. The flat has been finished immaculately with bespoke finishes throughout and has a share of the freehold.

Shalimar Gardens is within 500 metres of Acton Main Line for the Elizabeth Line, and is half a mile from Acton Central and Churchfield Road which has a range of independent cafés, bars and local amenities.



Total area (approx.): 44.1 sq. m (474.6 sq. ft)
(Excluding Eaves)

Robertson Smith & Kempson Acton Sales
137 High Street, Acton,
London, W3 6LY
020 8896 3996
actonsales@robertsonsmithandkempson.co.uk

Energy Rating: C. We aim to make our particulars both accurate and reliable. However they are not guaranteed; nor do they form part of an offer or contract. If you require clarification on any points then please contact us, especially if you're traveling some distance to view. Please note that appliances and heating systems have not been tested and therefore no warranties can be given as to their good working order.