



Fitzjohns Avenue

Hampstead, NW3

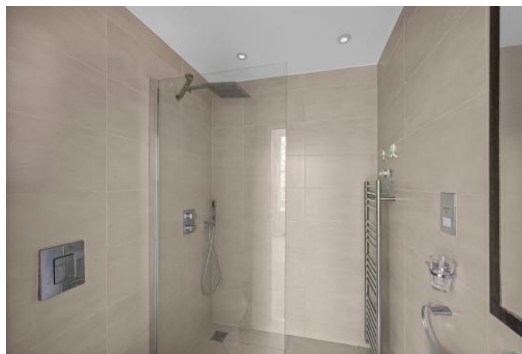
Asking Price £950,000

Situated within this semi-detached period house, a two bedroom, two bathroom raised ground floor flat superbly positioned next to Hampstead Village.

This outstanding flat boasts a 20' x 16' reception room with 3m high ceilings, wood floors, Sash windows, and the use of a delightful communal garden.

The property is located just 0.1 miles from all the shops, cafes and restaurants that Hampstead Village provides and just 0.2 miles from Hampstead Underground (Northern Line). Sole agent.

CHESTERTONS



Fitzjohns Avenue

Hampstead, NW3

- Two bedroom, two bathroom raised ground floor flat
- Semi-detached period house
- Spacious 20' x 16' reception room
- 3m high ceilings, wood floors, and sash windows
- 70' communal garden
- Share of freehold and a long lease
- Prime location next to Hampstead Village
- 0.1 miles to shops, cafes, and restaurants
- 0.2 miles to the Northern Line



Tenure: Share of Freehold and a lease with 958 years remaining.

Service Charge: £3,000 per annum including building insurance & general maintenance.

Ground Rent: £0

Local Authority: Camden

Council Tax Band: F

Score	Energy rating	Current	Potential
92+	A		
81-91	B		
69-80	C	75 C	83 B
55-68	D		
39-54	E		
21-38	F		
1-20	G		

Chestertons Hampstead Sales

55-56 Hampstead High Street

Hampstead

NW3 1QH

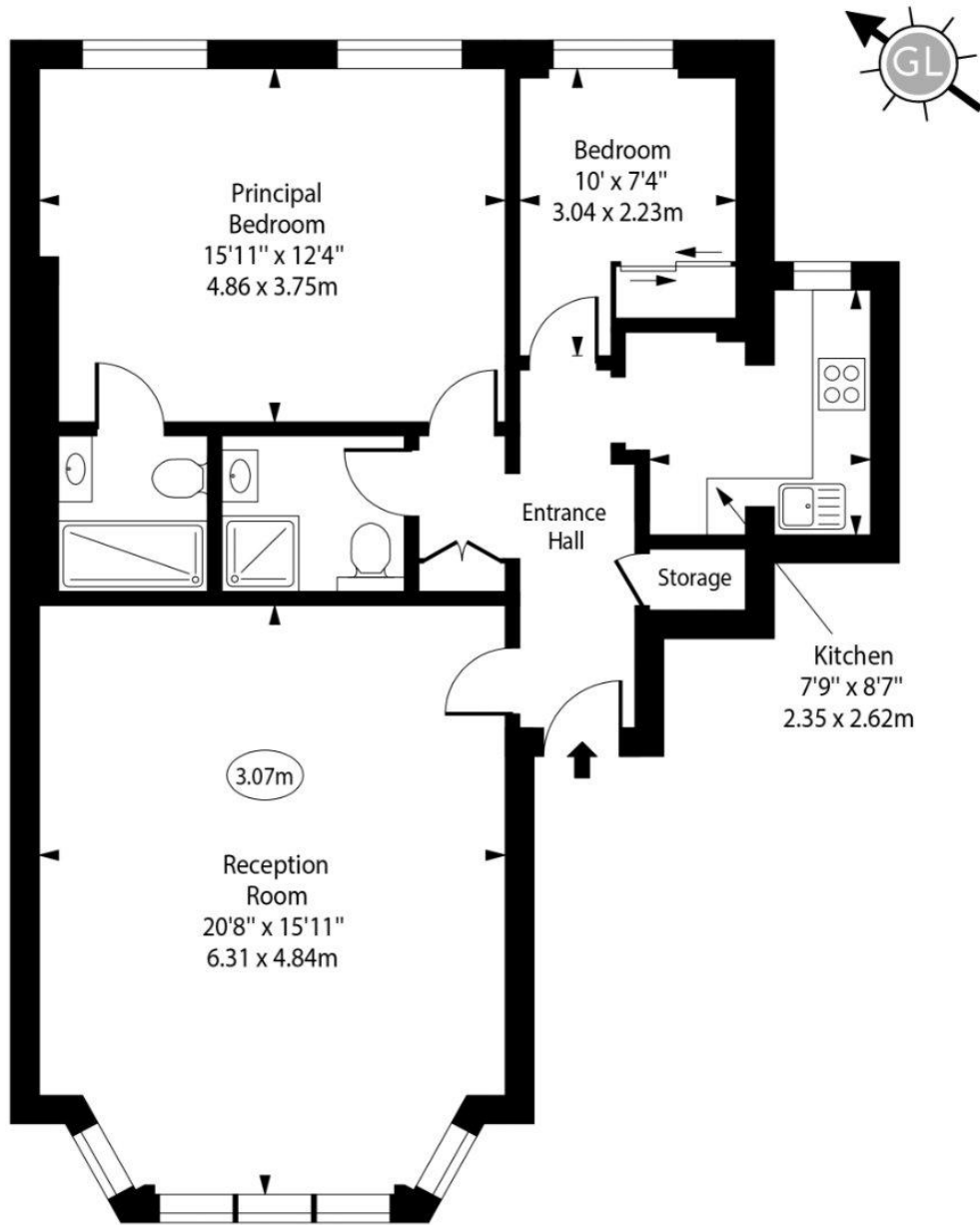
hampstead@chestertons.co.uk

020 7794 3311

chestertons.co.uk

Fitzjohns Avenue, NW3

○ - Ceiling Height



Upper Ground Floor

Approx Gross Internal Area 805 Sq Ft - 74.78 Sq M

Every attempt has been made to ensure the accuracy of the floor plan shown. However, all measurements, fixtures, fittings, and data shown are approximate interpretations and for illustrative purposes only. Measured according to the RICS. Not To Scale.

www.goldlens.co.uk
Prepared for Chestertons
Ref. No. 031445D