



**Connells**

St. Margarets Court Vicarage Road  
Bletchley MILTON KEYNES



### Property Description

\*\*\*TENANT-IN-SITU\*\*\* Offered to the market with no onward chain is this two bedroom maisonette located in the heart of Bletchley. Accommodation is split over two levels, with one level consisting of a lounge/diner and a kitchen. The top floor offers two double bedrooms and a family bathroom. Outside the property benefits from a car port and communal gardens. The lease has approximately 40 years remaining so is only available for cash buyers.

St Margarets Court is a development of apartments off Vicarage Road in Fenny Stratford. The area is close to Bletchley and Fenny Stratford high streets and offers easy access to the local shops and amenities including doctors surgery, pharmacies, dentists, shops and bus stops. The Bletchley train and bus station is are also within walking distance.

\*\*\*TENANT-IN-SITU\*\*\* Offered to the market with no onward chain is this two bedroom maisonette located in the heart of Bletchley. Accommodation is split over two levels, with one level consisting of a lounge/diner and a kitchen. The top floor offers two double bedrooms and a family bathroom. Outside the property benefits from a car port and communal gardens. The lease has approximately 40 years remaining so is only available for cash buyers.

St Margarets Court is a development of apartments off Vicarage Road in Fenny Stratford. The area is close to Bletchley and Fenny Stratford high streets and offers easy access to the local shops and amenities including doctors surgery, pharmacies, dentists, shops and bus stops. The Bletchley train and bus station is are also within walking distance.

\*\*\*TENANT-IN-SITU\*\*\* Offered to the market with no onward chain is this two bedroom maisonette located in the heart of Bletchley. Accommodation is split over two levels, with one level consisting of a lounge/diner and a kitchen. The top floor offers two double bedrooms and a family bathroom. Outside the

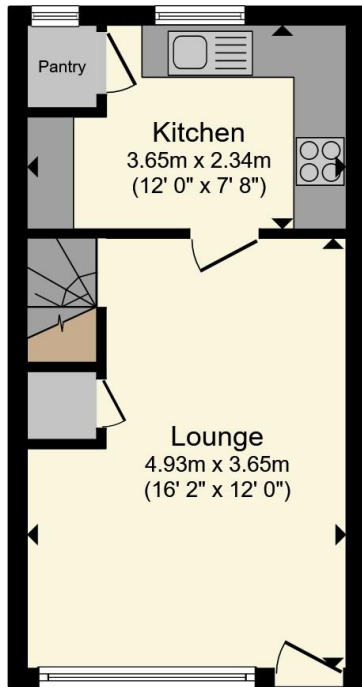
property benefits from a car port and communal gardens. The lease has approximately 40 years remaining so is only available for cash buyers.

St Margarets Court is a development of apartments off Vicarage Road in Fenny Stratford. The area is close to Bletchley and Fenny Stratford high streets and offers easy access to the local shops and amenities including doctors surgery, pharmacies, dentists, shops and bus stops. The Bletchley train and bus station is are also within walking distance.

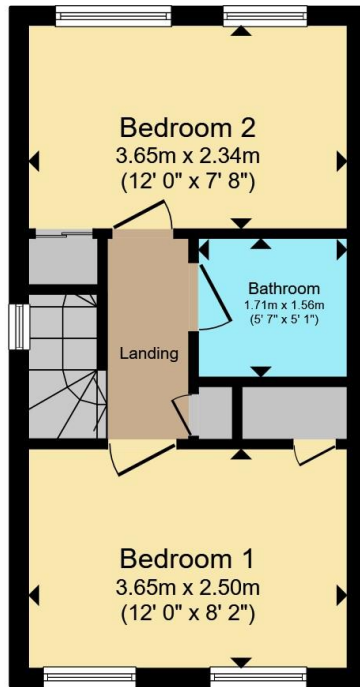
\*\*\*TENANT-IN-SITU\*\*\* Offered to the market with no onward chain is this two bedroom maisonette located in the heart of Bletchley. Accommodation is split over two levels, with one level consisting of a lounge/diner and a kitchen. The top floor offers two double bedrooms and a family bathroom. Outside the property benefits from a car port and communal gardens. The lease has approximately 40 years remaining so is only available for cash buyers.

St Margarets Court is a development of apartments off Vicarage Road in Fenny Stratford. The area is close to Bletchley and Fenny Stratford high streets and offers easy access to the local shops and amenities including doctors surgery, pharmacies, dentists, shops and bus stops. The Bletchley train and bus station is are also within walking distance.





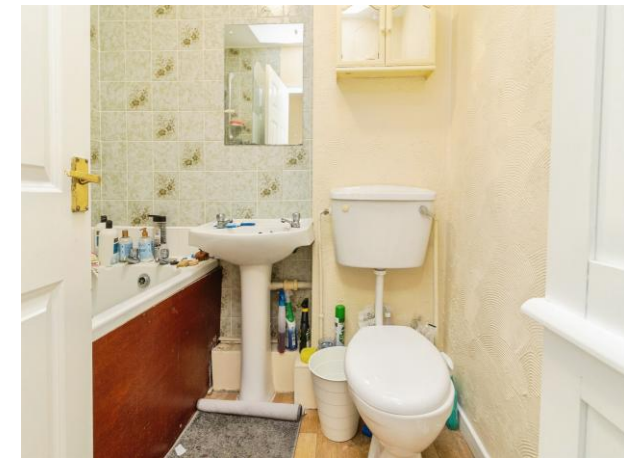
**Ground Floor**



**First Floor**

Total floor area 53.8 m<sup>2</sup> (579 sq.ft.) approx

This floor plan is for illustrative purposes only. It is not drawn to scale. Any measurements, floor areas (including any total floor area), openings and orientation are approximate. No details are guaranteed, they cannot be relied upon for any purpose and they do not form part of any agreement. No liability is taken for any error, omission or misstatement. A party must rely upon its own inspection(s). Powered by www.propertybox.io



To view this property please contact Connells on

**T 01908 375 241**  
**E [bletchley@connells.co.uk](mailto:bletchley@connells.co.uk)**

188 Queensway Bletchley  
 MILTON KEYNES MK2 2SW

EPC Rating: D Council Tax Band: B

Service Charge: 1380.00

Ground Rent: 200.00

Tenure: Leasehold

**view this property online [connells.co.uk/Property/BLE311775](http://connells.co.uk/Property/BLE311775)**

This is a Leasehold property with details as follows; Term of Lease 99 years from 25 Dec 1965. Should you require further information please contact the branch. Please Note additional fees could be incurred for items such as Leasehold packs.



1. MONEY LAUNDERING REGULATIONS Intending purchasers will be asked to produce identification documentation at a later stage and we would ask for your co-operation in order that there will be no delay in agreeing the sale. 2. These particulars do not constitute part or all of an offer or contract. 3. The measurements indicated are supplied for guidance only and as such must be considered incorrect. Potential buyers are advised to recheck measurements before committing to any expense. 4. We have not tested any apparatus, equipment, fixtures, fittings or services and it is in the buyers interest to check the working condition of any appliances.

Connells Residential is registered in England and Wales under company number 1489613, Registered Office is Cumbria House, 16-20 Hockliffe Street, Leighton Buzzard, Bedfordshire, LU7 1GN. VAT Registration Number is 500 2481 05.

**See all our properties at [www.connells.co.uk](http://www.connells.co.uk) | [www.rightmove.co.uk](http://www.rightmove.co.uk) | [www.zoopla.co.uk](http://www.zoopla.co.uk)**

Property Ref: BLE311775 - 0005