

# PARKWAY

£2,000pcm

---

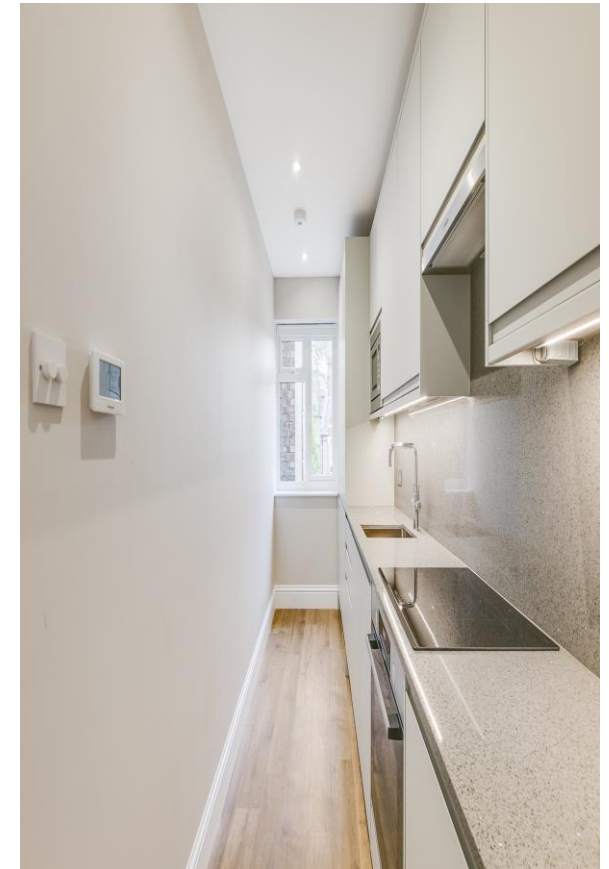
LONDON NW1

CHESTERTONS

# PARKWAY

This completely refurbished one double bedroom apartment is situated on second floor within this period conversion. The property comprises; open plan reception room, master bedroom and luxury shower room.





## Specifications

- Refurbished to a very high standard
- Modern fixtures and fittings
- Luxury shower room
- An abundance of natural light
- Close To Camden Town & Regents Park







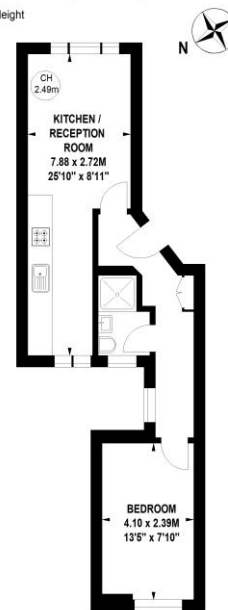




Price: | EPC: C

**Parkway, NW1**

Approximate gross internal area

**37.90 sq m / 408 sq ft**Key:  
CH - Ceiling Height

Not to scale, for guidance only and must not be relied upon as a statement of fact.  
All measurements and areas are approximate only

**Parkway, NW1**

Approximate gross Internal area  
37.9 sq m / £4.90/Sq.Ft. p/m

This plan is for layout guidance only. Not drawn to scale unless stated. Windows and door openings approximate. Whilst every care is taken in the preparation of this plan, please check all dimensions, shapes and compass bearings before making decisions reliant upon them.

# Location

Parkway is ideally situated moments from Camden's underground station and close to all the amenities of Camden High Street.

Chestertons Camden & Primrose Hill  
99-101 Parkway  
London, NW1

02072673574  
camdentownlettingsusers@chestertons.  
chestertons.co.uk

Chesterton Global Ltd trading as Chestertons for themselves and for the vendor of this property whose agents they are, give notice that (i) these particulars do not constitute any part of an offer or contract, (ii) all statements contained within these particulars are made without responsibility on the part of Chestertons or the vendor, (iii) whilst made in good faith, none of the statements contained within these particulars are to be relied upon as a statement or representation of fact, (iv) any intending purchasers must satisfy themselves by inspection or otherwise as to the correctness of each of the statements contained within these particulars, (v) the vendor does not make or give either Chestertons or any person in their employment any authority to make or give representation or warranty whatsoever in relation to this property. Wide angle lenses may be used. ©Copyright Chestertons | Chesterton Global Ltd | Registered Office 40 Connaught Street, Hyde Park, London W2 2AB Registered Company Number 05334580.

