



Pope Close, SW19

£595,000

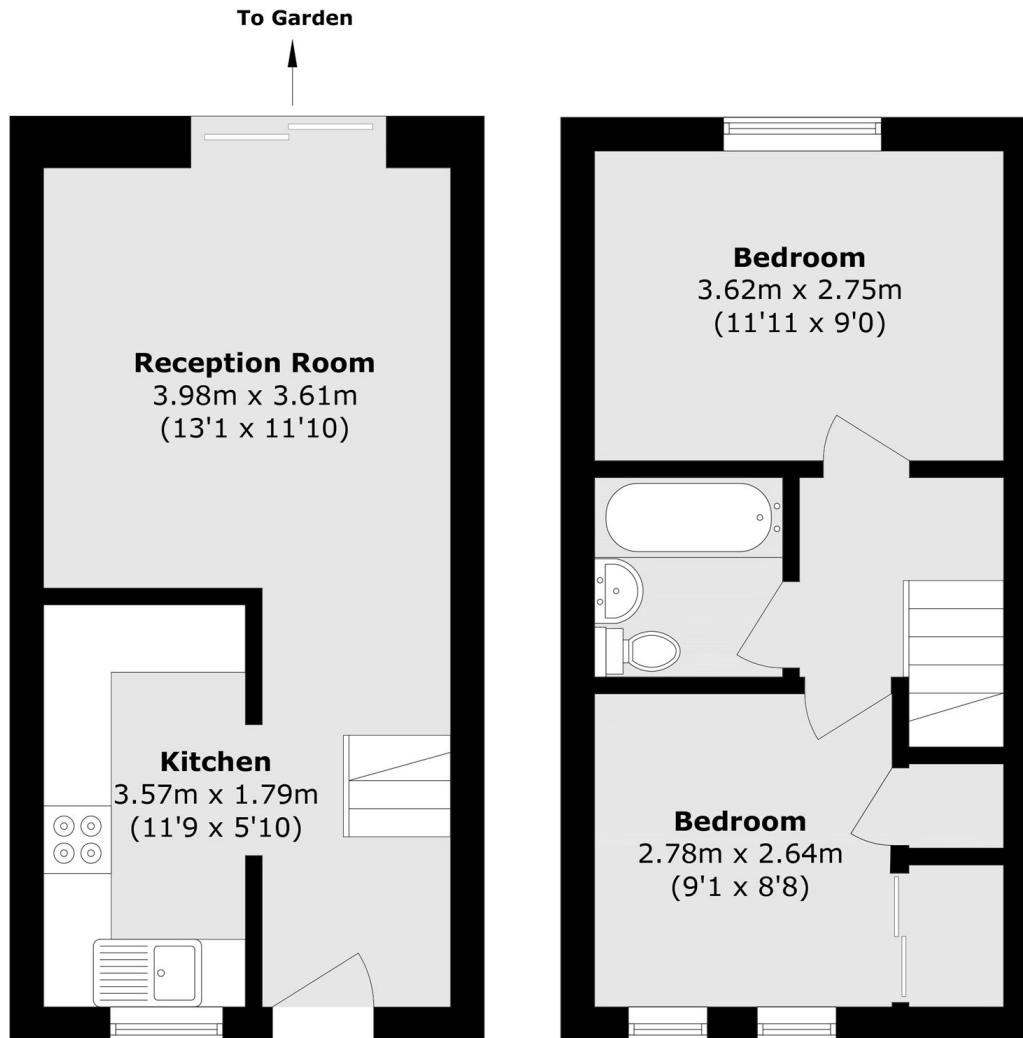
A fantastic two bedroom freehold house with off street parking for two cars. There is spacious living accommodation throughout, a southerly facing garden as well as being surrounded by superb transport links.

Pope Close Has the benefit of being well located but also a quiet area close to Colliers Wood Northern Line. The green open spaces of the Wandle Meadow Nature Park and Haydons Road Recreation Ground are also very nearby.

Features

- Two Double Bedrooms
- Freehold House
- Southerly Facing Garden
- Off Street Parking
- Excellent Transport Links
- No Forward Chain

Pope Close, London, SW19



Total area (approx.): 55.0 sq. m (592.0 sq. ft)