



Forest Gate, Evesham, WR11 1XZ

**SHELDON  
BOSLEY  
KNIGHT**

LAND AND  
PROPERTY  
PROFESSIONALS

# Property Description

\*\*\* AVAILABLE MID JULY - DEPOSIT  
ALTERNATIVE AVAILABLE \*\*\*

A recently redecorated three bedroom mid-terrace house situated on the outskirts of Evesham. Evesham is a historic market town offering a range of supermarkets, shops, cafés and restaurants, together with riverside walks along the River Avon and excellent road and rail links.

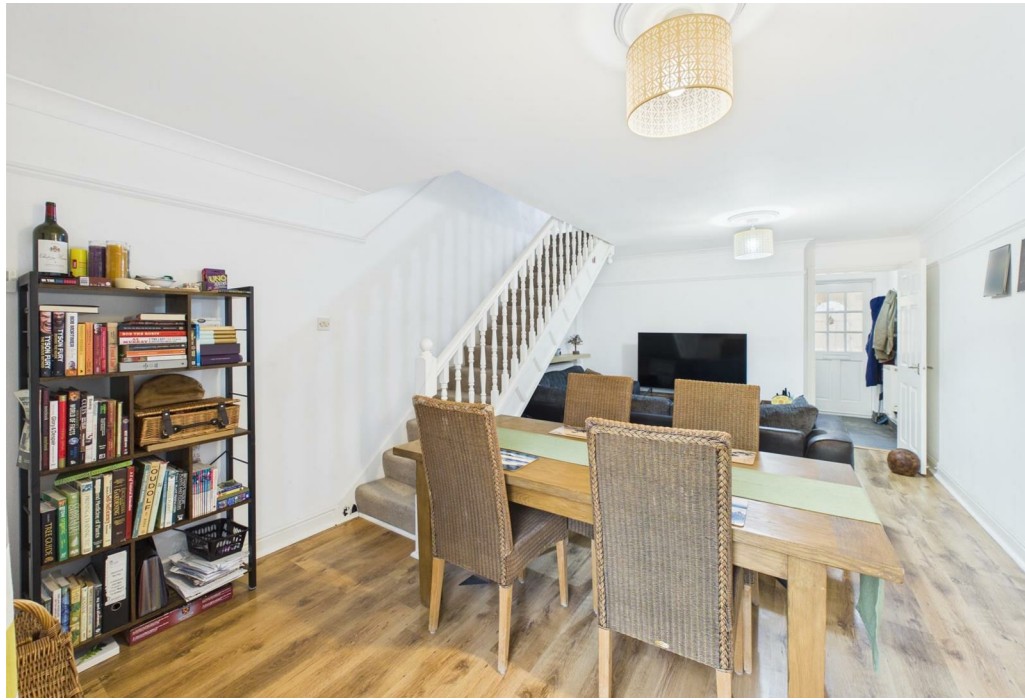
The accommodation briefly comprises; entrance hall, modern fitted kitchen with space for appliances, spacious living room with doors opening into the conservatory, and further double doors leading to the rear garden.

Stairs rise to the first floor where there is one double bedroom with wardrobe space, two single bedrooms, and a family bathroom fitted with a full suite including shower over bath.

Externally, the property benefits from an enclosed rear garden and one allocated parking space.

The property is offered UNFURNISHED.  
Council Tax Band B.  
Energy Rating C







## Key Features

- AVAILABLE MID JULY
- DEPOSIT ALTERNATIVE AVAILABLE
- Evesham
- Three Bedrooms
- Terraced House
- Unfurnished
- Conservatory and Rear Garden
- Parking For One Car
- Council Tax Band B
- Energy Rating C

**£1,100 PCM**