



Hampton Road, TW11

£399,950

Situated in this popular gated development we are delighted to offer this stunning one bedroom apartment. The property is offered in excellent condition throughout with allocated parking.

Millwood House is located on Hampton Road very close to Royal Bushy Park and is excellent for transport links. Both Hampton Hill and Teddington High Streets are easy to reach with shops and restaurants. The River Thames is within walking distance too.

Features

- New Build
- One Double Bedroom
- Allocated Parking Space
- Video Entry System
- Immaculate Condition
- Gated Development



Hampton Road, TW11

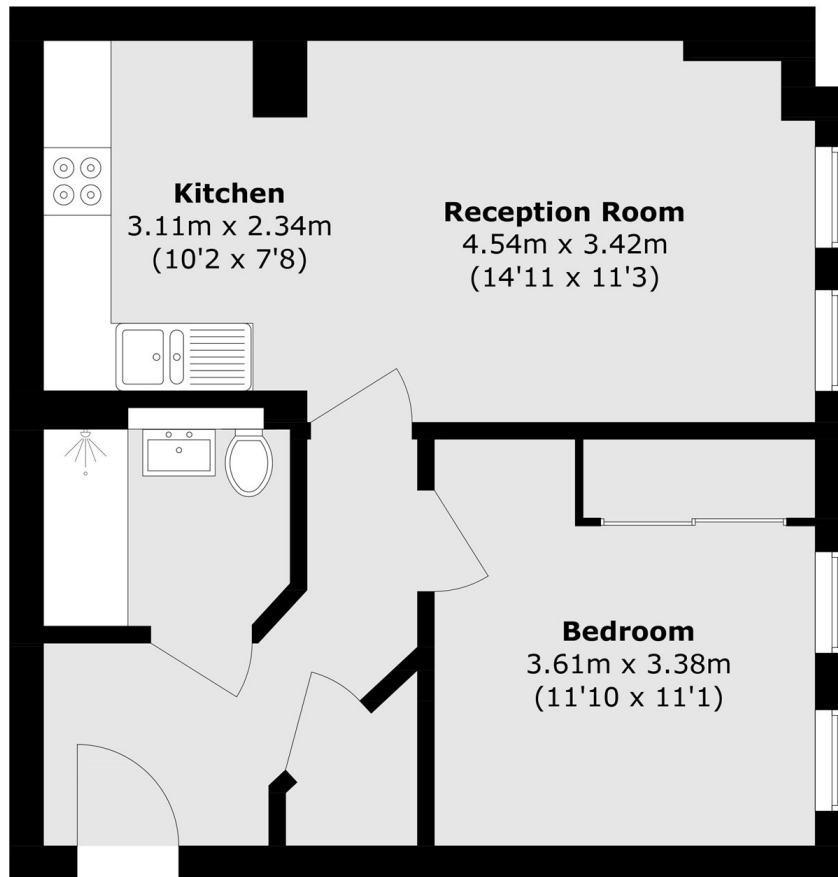
This apartment has a lovely layout and would be the perfect first time buy or lock up and leave should you travel. The reception room is a spacious 14ft which then opens onto the kitchen allowing for plenty of space to dine.

The sleek and modern kitchen has integrated appliances. Being a South facing aspect this apartment is warm and bright all year around. There is a good sized bedroom with excellent floor to ceiling storage.

Completing the apartment there is a modern bathroom and additional storage in the hallway. Externally there is allocated parking, secure bike storage within the communal gardens which are located to the rear of the building



Hampton Road, Teddington, TW11



Total area (approx.): 48.7 sq. m (524.2 sq. ft)