



**Flat 6, 125 Berry Head Road, Brixham - TQ5 9AH**

Guide Price **£215,000-£235,000**

**ABSOLUTE**  
SALES & LETTINGS





## Flat 6, 125 Berry Head Road

Brixham

**\*\*New Guide Price\*\*** Prime location 2-bed apartment with stunning sea views and integrated kitchen/living area. Near town centre and seafront in Brixham. Includes parking and close to seawater swimming pool. Ideal coastal retreat or investment opportunity.

Council Tax band: C

Tenure: Leasehold

- Two bedroom apartment
- Allocated parking for 1 car, a visitor space is also available
- Open sea and harbour views
- Shower Room
- Fitted kitchen
- Open plan living
- Ideal holiday home or investment property
- Less than half a mile from Brixham town centre and harbour
- Seawater swimming pool less than a minute away



# Flat 6, 125 Berry Head Road

Brixham

Located within the Berry head area of Brixham, this apartment is less than a mile away from Brixham town centre and harbour. The historic port has lots to offer with independent shops, restaurants, cafes and pubs. There are also bus routes available to the nearby towns of Paignton and Torquay.

## Absolute Sales & Lettings

Absolute Sales & Lettings, 36 Fore Street - TQ5 8DZ

01803 214214

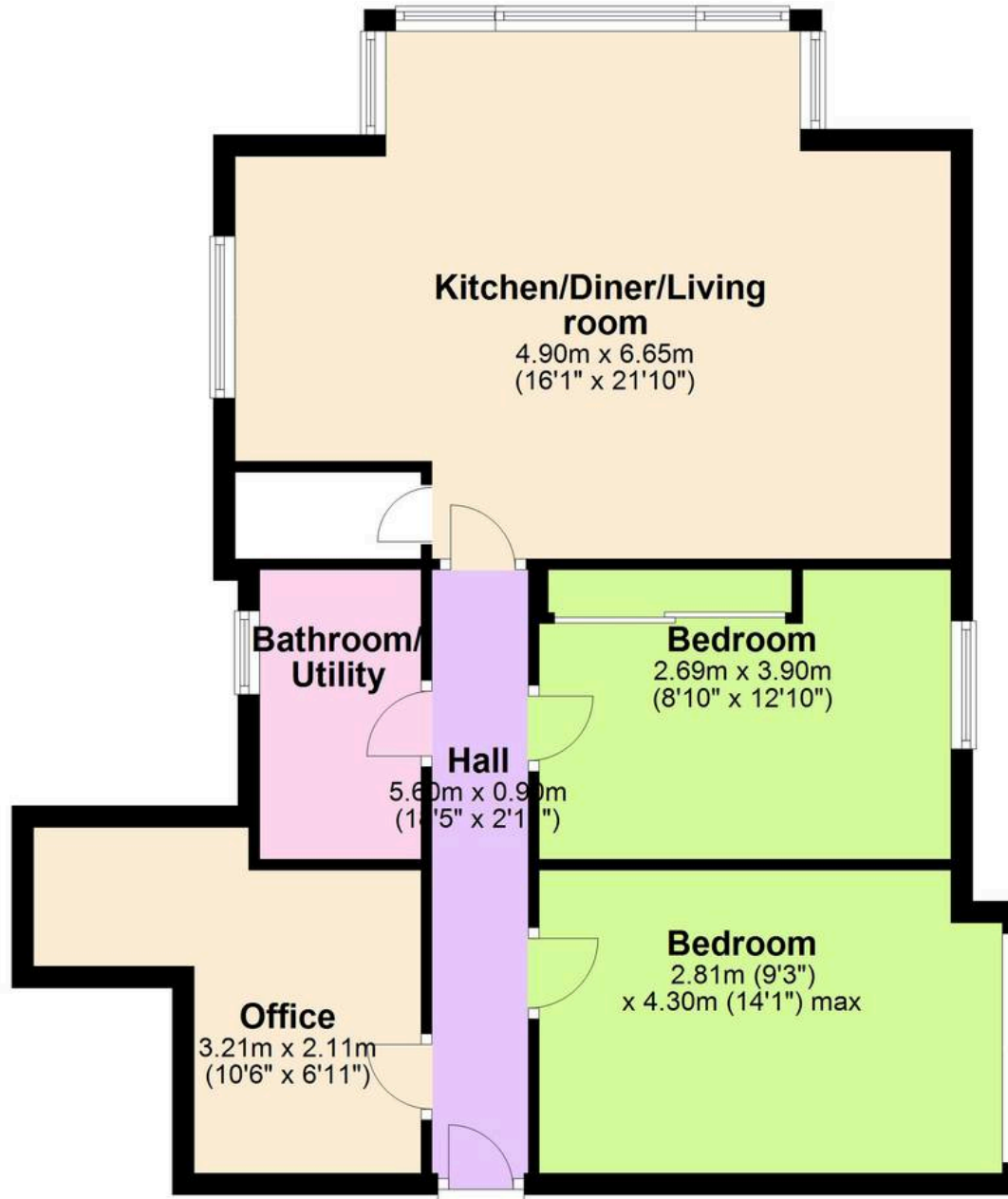
[brixham@movewithabsolute.co.uk](mailto:brixham@movewithabsolute.co.uk)

[movewithabsolute.co.uk/](http://movewithabsolute.co.uk/)



# Ground Floor

Approx. 77.1 sq. metres (829.6 sq. feet)



Total area: approx. 77.1 sq. metres (829.6 sq. feet)

