



Stanley Road, TW3

£425,000

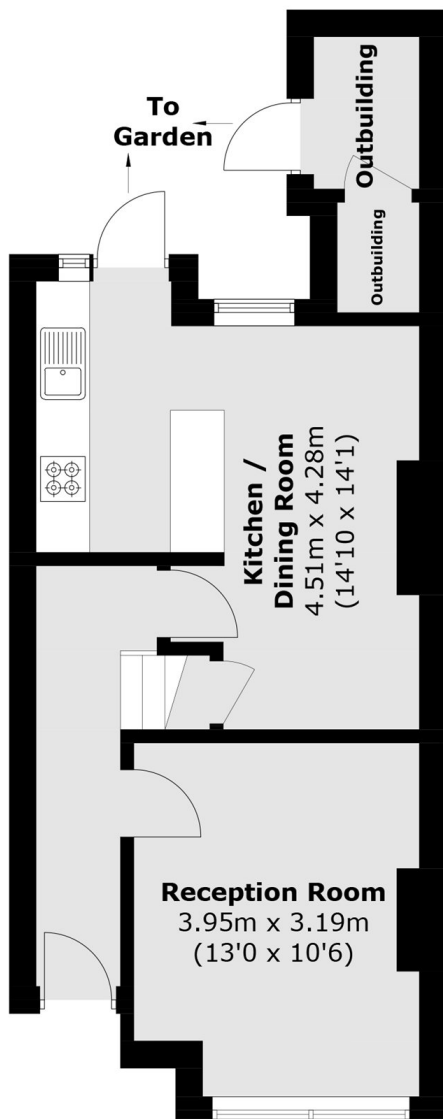
Presented in good condition throughout, we are delighted to bring to the market this two bedroom family house. Further benefits include a secluded south-facing garden, scope to extend (STPP) and is offered with no onward chain.

Stanley Road is a quiet residential road within close proximity to Hounslow high street as well as local parks, schools and transport links. Both Hounslow Central Tube Station and Hounslow Mainline Overground are a short walk away, offering easy access to Heathrow, Central London and the West End.

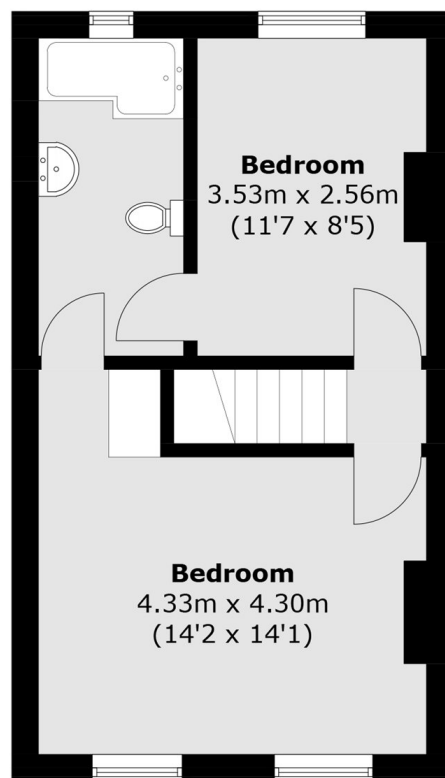
Features

- Freehold House
- Two Bedrooms
- Good Condition
- Scope to Extend (STPP)
- Central Location
- No Chain

Stanley Road, Hounslow, TW3



Ground Floor



First Floor

Approx Internal Area: 70.6 sq. m (759.9 sq. ft)
Outbuildings: 3.4 sq. m (36.6 sq. ft)
Total: 74.0 sq. m (796.5 sq. ft)