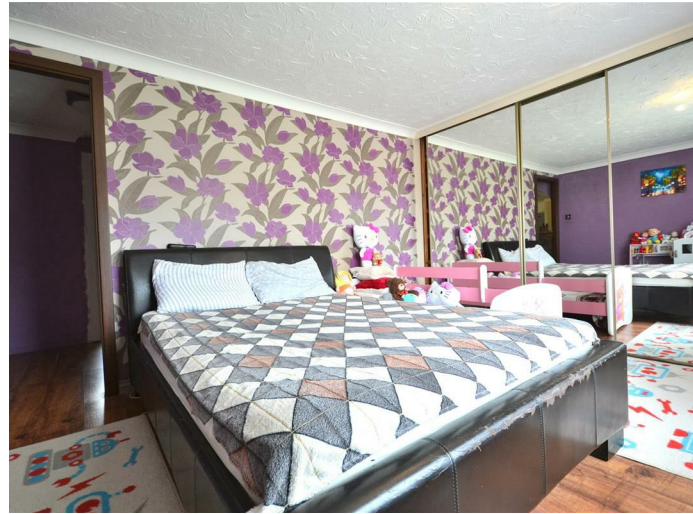
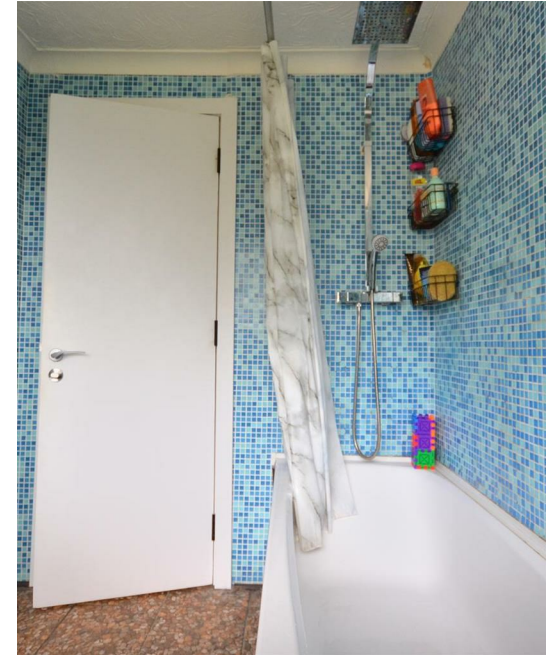


146 St. Edmundsbury Road, King's Lynn, PE30 2DT

£99,000

Council Tax Band: A



Open House King's Lynn presenting to the market this spacious two-bedroom ground floor apartment with garden and off road parking. Built in 1960 property offers a generous 764 square feet of living space, making it an ideal choice for individuals or small families seeking comfort and convenience.

The flat features open plan lounge/ kitchen, two well-proportioned bedrooms, and family bathroom. The standout features of this property are the rear garden, which includes the covered outside seating area as well as gated front garden with brick shed and off road parking

Situated close to the town centre, this flat offers easy access to a variety of local amenities, including shops, schools, and public transport links.

Property is sold as vacant, allowing for a smooth transition for the new owner. Whether you are looking to invest or seeking a new home, this flat presents an excellent opportunity in a convenient location.

Do not miss the chance to make this lovely apartment your own.



Open House King's Lynn  
sales & lettings

Tel: 01553675042

E: [kingslynn@localagent.co.uk](mailto:kingslynn@localagent.co.uk)

W: [openhousekingslynn.co.uk](http://openhousekingslynn.co.uk)

**FEATURES**

2 bedroom spacious ground floor apartment

Open plan lounge / kitchen

Gas central heating

Front and rear gardens

Gated off road parking space

Brick shed

Covered seating area and shed

Close to amenities and town centre

Council tax band A

Energy Efficiency Rating		
	Current	Potential
<i>Very energy efficient - lower running costs</i>		
(92 plus) <b>A</b>		
(81-91) <b>B</b>		
(69-80) <b>C</b>	74	76
(55-68) <b>D</b>		
(39-54) <b>E</b>		
(21-38) <b>F</b>		
(1-20) <b>G</b>		
<i>Not energy efficient - higher running costs</i>		
<b>England &amp; Wales</b>	EU Directive 2002/91/EC 