



Pittsfield, Cricklade – SN6 6AW
Wiltshire

Guide Price **£465,000**

mcfarlane
property.com

Pittsfield

Cricklade, Swindon

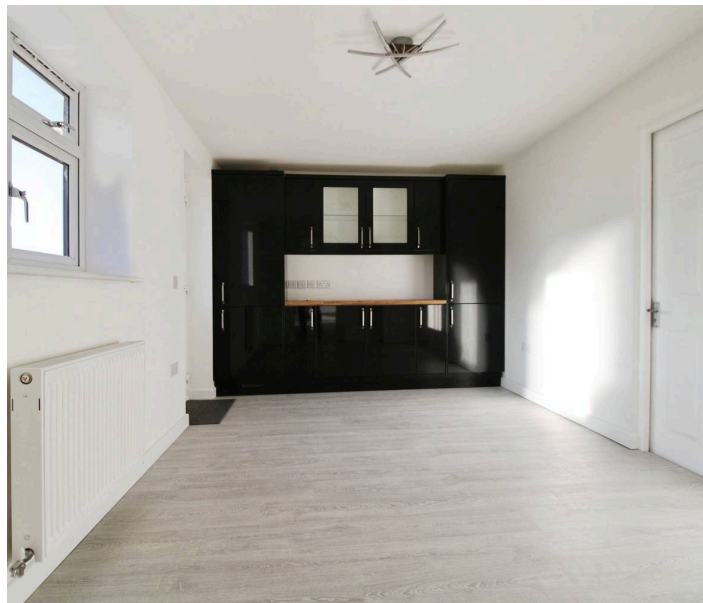
A stunning FOUR Bedroom family home in a sought after residential setting within Cricklade. This property has been altered and improved to now offer approximately 1,500 Sq Ft of internal space. The accommodation has been recently decorated and offers a bright and airy feel throughout. Should a discerning buyer be looking to personalise, there is a generous internal garage with internal access to the property.

One of the key features with this family home is the Master Bedroom with walk in Dressing Room and En-Suite Shower Room. Another point of note is the Living Room this has had the stairs removed and the room has been extended to the front. This now feels an expansive and well balanced reception room.

Externally this family home excels again with a well positioned and generous enclosed Rear Garden.

A summary of the accommodation briefly comprises: Entrance Hallway, Living Room, Kitchen / Breakfast Room, Dining Room / Family Room. Cloakroom. The First Floor Offers FOUR Bedrooms that includes a Master Bedroom with Walk In Dressing Room and En-Suite Shower Room. There is also included a well appointed Family Bathroom servicing the Other Three Bedrooms.

Externally open plan frontage with Off Road Parking for TWO Cars and Access to the Single Garage. The Rear Gardens are enclosed with generous proportions.



Pittsfield – Cricklade

Wiltshire

No Chain

Sole Selling Agents

McFarlane Sales + Lettings

01793 751 044

Call to Register and View.

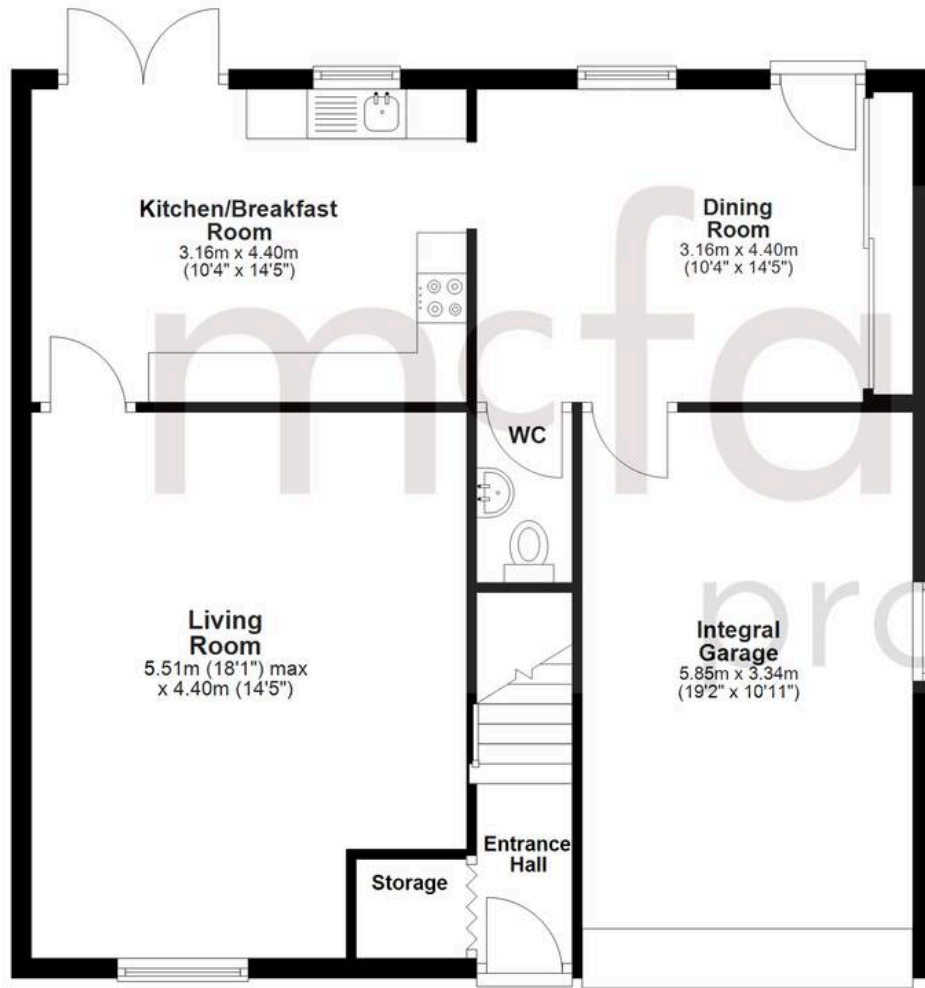
NOT TO BE MISSED.



mcFarlane
property.com

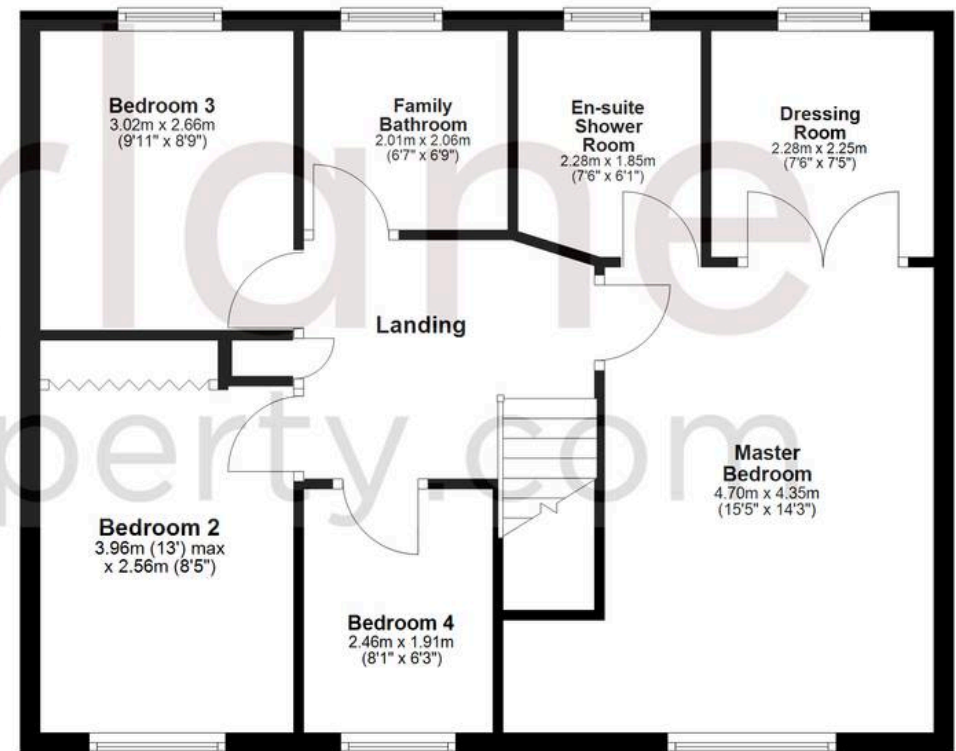
Ground Floor

Approx. 78.1 sq. metres (840.3 sq. feet)



First Floor

Approx. 64.2 sq. metres (691.3 sq. feet)



Total area: approx. 142.3 sq. metres (1531.7 sq. feet)