

Crescent Lane, SW4

£2,650 Per calendar month

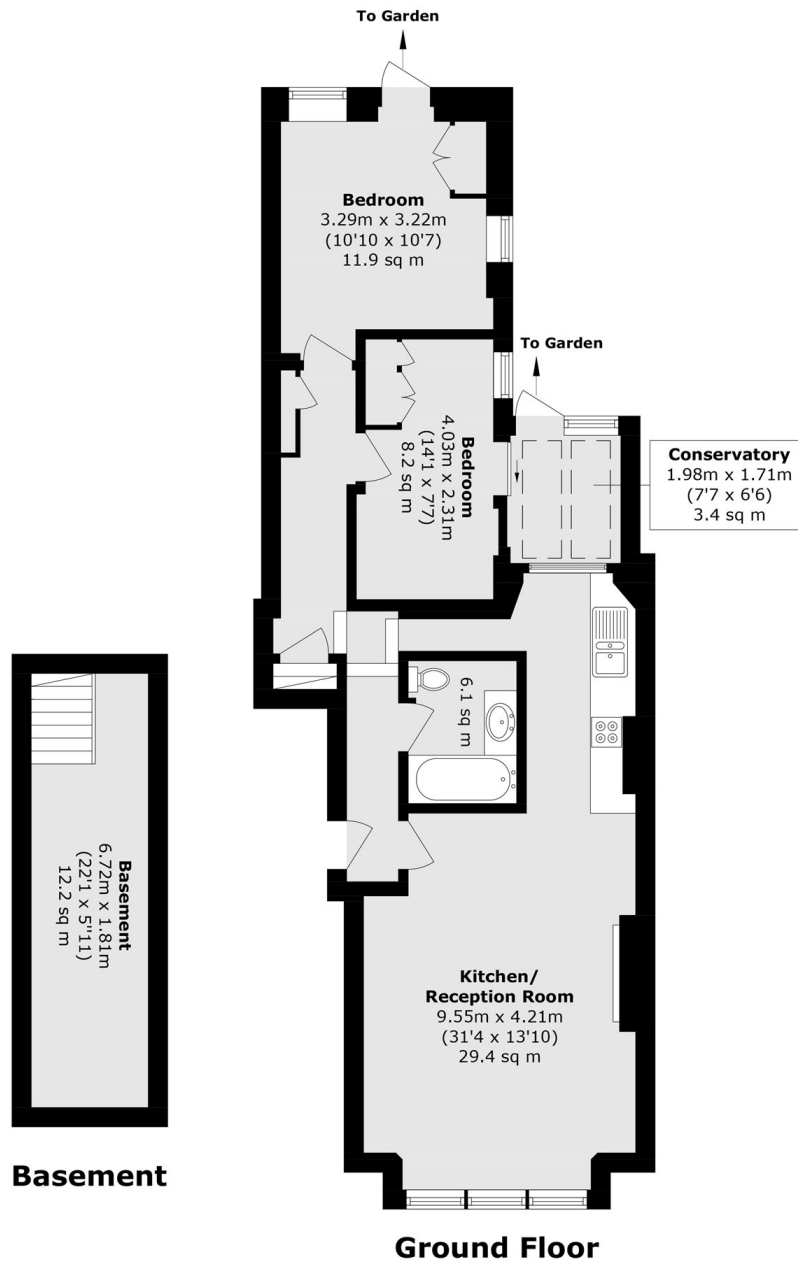
This ground floor one-bedroom flat with a study is set within a Victorian conversion on Crescent Lane, in the sought-after Abbeville Village. Bright and airy throughout, the property benefits from a private garden.

Crescent Lane is located in the sought after Abbeville Village, moments from the many local shops, restaurants and cafés and the open spaces of Clapham Common.

Features

- Period Conversion
- One Double Bedroom
- Office/Study Room
- Large Reception Room
- Private Garden
- Abbeville Village

Crescent Lane, London, SW4



Total area (approx.): 82.8 sq. m (891.3 sq. ft)