

**Cambridge Road, Ashford, TW15 1UF**

**£475,000 F/H**



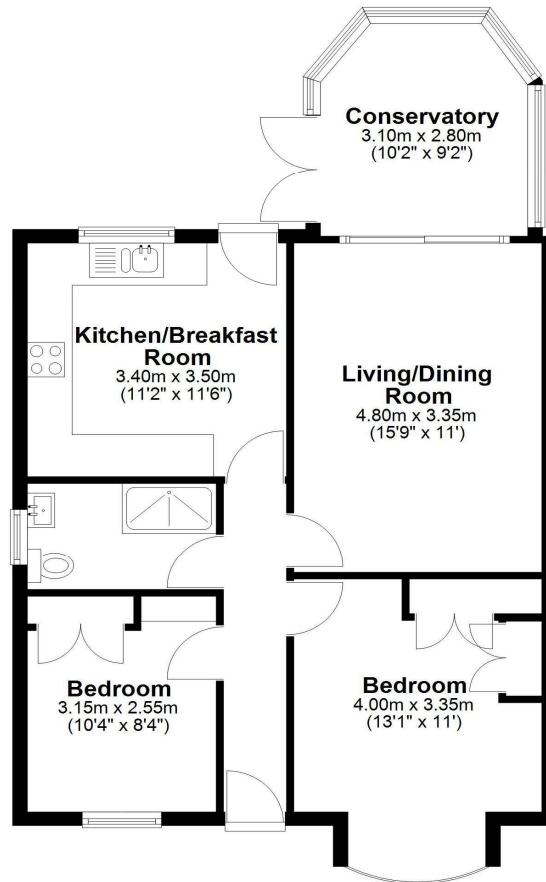
An excellent opportunity to acquire this detached bungalow located in a popular residential road in Ashford within walking distance of local amenities and public transport facilities. Accommodation comprises entrance hallway, two bedrooms, luxury family shower room, living room, conservatory, modern fitted kitchen/ dining room, private rear garden and off street parking. Further benefits include potential to extend or loft convert (S.T.P.P). No onward chain

## Cambridge Road, Ashford, Middlesex, TW15 1UF

### FLOOR PLAN

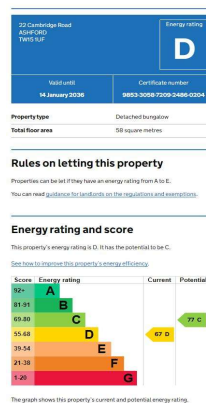
#### **Ground Floor**

Approx. 67.4 sq. metres (725.7 sq. feet)



Total area: approx. 67.4 sq. metres (725.7 sq. feet)

### EPC



**COUNCIL TAX BAND:**

**D - Spelthorne Borough Council**

**VIEWINGS:**

**By appointment with the clients selling agents,  
Nevin & Wells Residential on 01784 437 437 or  
visit [www.nevinandwells.co.uk](http://www.nevinandwells.co.uk)**



All measurements are approximate. Nevin & Wells Residential have not tested any systems or appliances.